

18_0024

18_0032

18_0033A

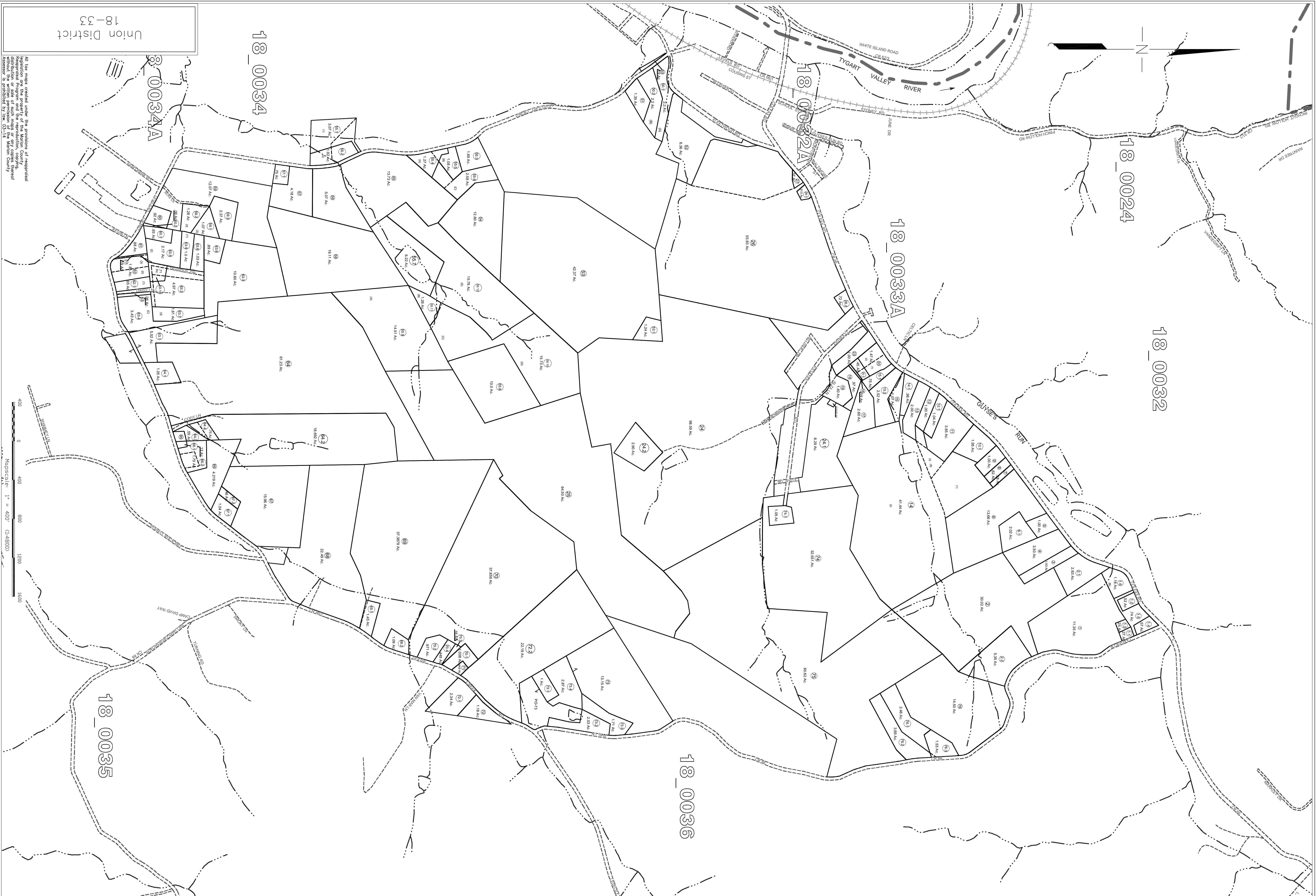
18_0032A

18_0034

18_0034A

18_0035

18_0036



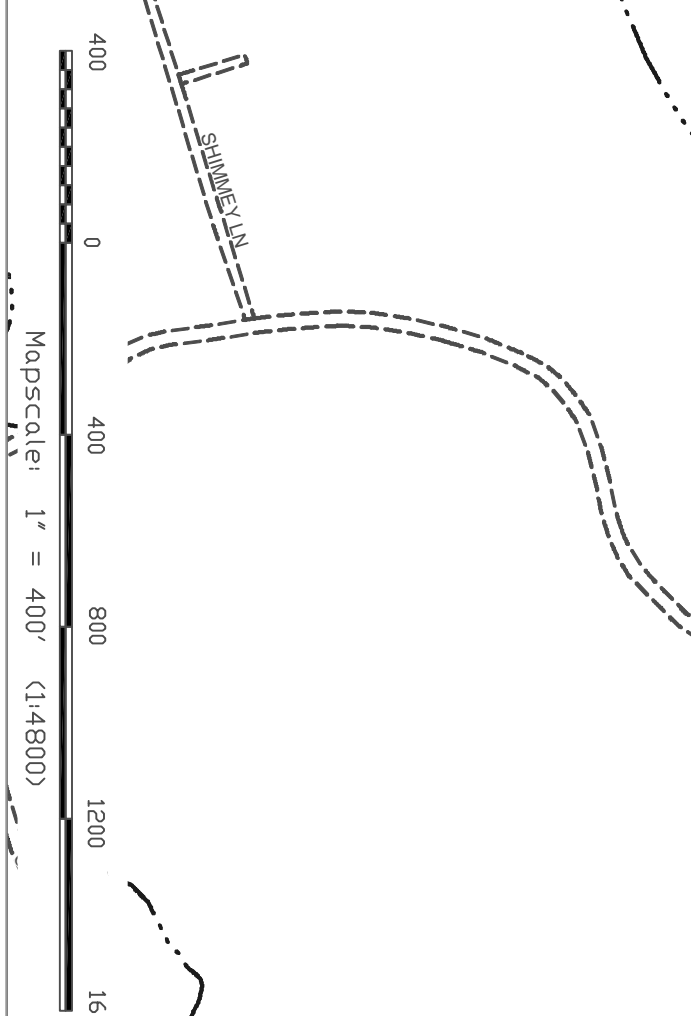
Union District
18-33

All lot maps created under the provisions of representative legislation are the property of the Marion County Assessor's Office. The reproduction, copying, or distribution of any map or map data without the written permission of the Marion County Assessor is prohibited by law. 03-14

THIS DOCUMENT IS A TAX MAP. It was compiled for purposes of taxation from survey plat. The existence of data on this map does not imply an "official" status to such data. The WV State Tax Dept. and the Marion County Assessor's Office assume no liability that might result from use of this document.

LEGEND

Property Line	Original Lot Line
Edge of roadway	Lot number
Corporation Line	Tax Parcel Number
Hydrography	Revised



Office of the
Marion County Assessor

Revision	Date
1	NOV 17 2015
2	NOV 17 2015
3	OCT 1 2019
4	OCT 1 2020
5	OCT 1 2021

Union District
18-33