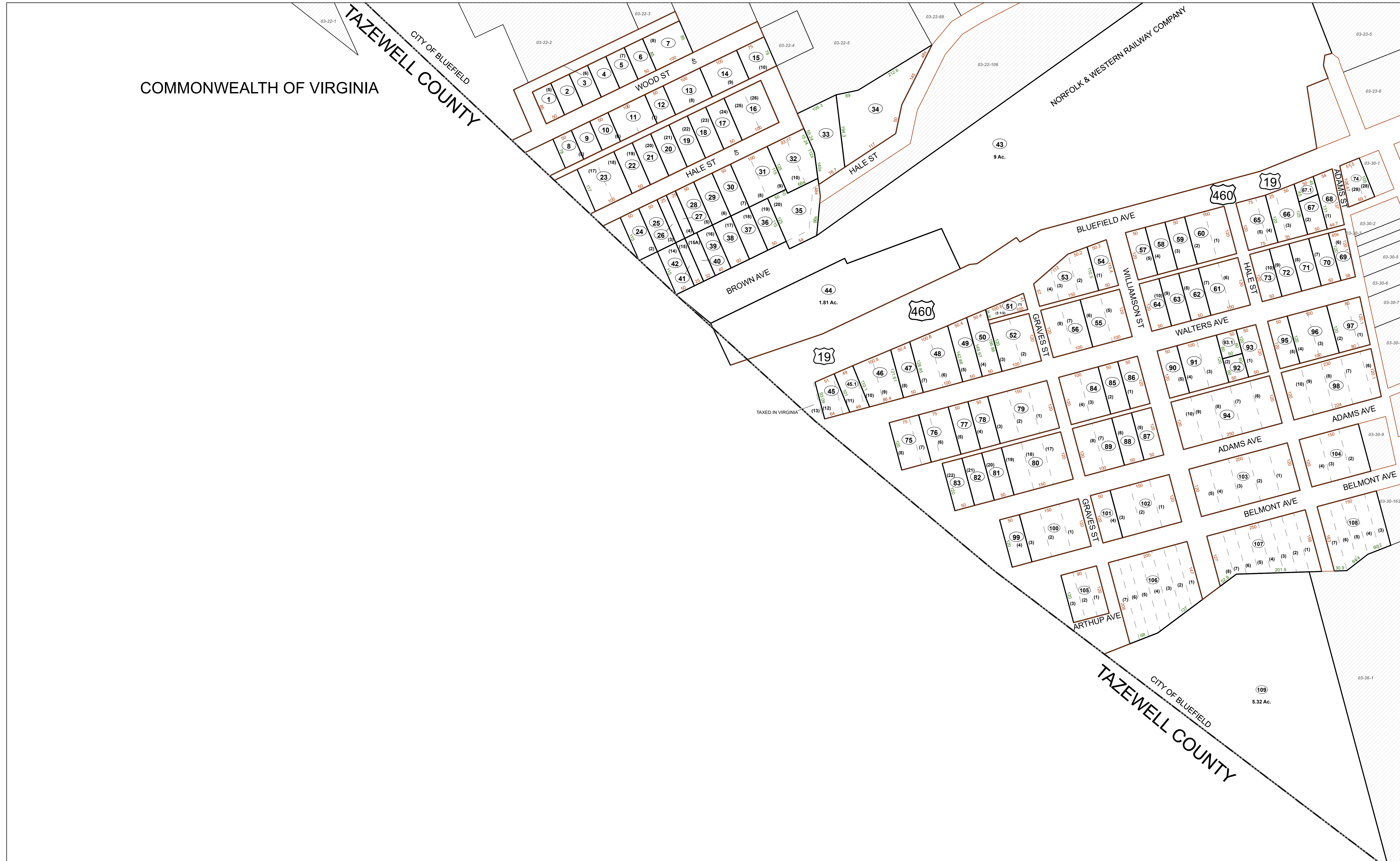


COMMONWEALTH OF VIRGINIA

TAZEWELL COUNTY  
CITY OF BLUEFIELD

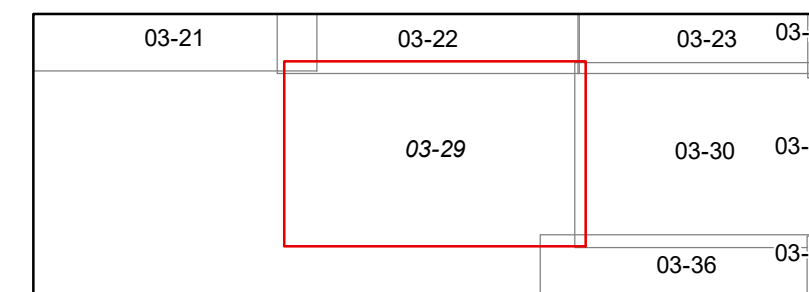
NORFOLK & WESTERN RAILWAY COMPANY



FOR TAX PURPOSES ONLY  
 Prepared By  
 Mercer County Assessor's Office  
 Princeton, West Virginia

This tax map was compiled for the purpose of taxation from available record evidence and has not been field verified. This map is not a valid survey plat and the data on the map does not imply any official status to such data. The State of West Virginia and the Mercer County Assessor's Office assume no liability that might result from the use of this map.

Legend	
Property Line	Original Lot Line
Road Right of Way	Lot Number
Corporation Line	Parcel Number
District Line	Water
County Line	Railroad



MERCER COUNTY  
 WEST VIRGINIA  
 Office of Assessor



BLUEFIELD  
 Map: 29  
 Date, Aerial Photography: 2010  
 Date, Map: 9/20/2021  
 Scale: 1" = 100'