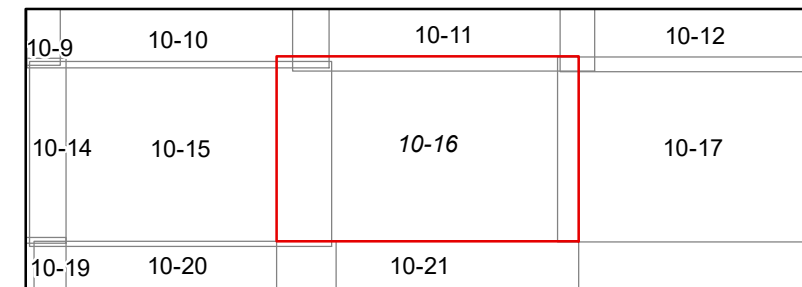


FOR TAX PURPOSES ONLY  
 Prepared By  
 Mercer County Assessor's Office  
 Princeton, West Virginia

This tax map was compiled for the purpose of taxation from available record evidence and has not been field verified. This map is not a valid survey plat and the data on the map does not imply any official status to such data. The State of West Virginia and the Mercer County Assessor's Office assume no liability that might result from the use of this map.

- Legend**
- Property Line
  - Road Right of Way
  - Corporation Line
  - District Line
  - County Line
  - Original Lot Line
  - Lot Number
  - Parcel Number
  - Water
  - Railroad



**MERCER COUNTY**  
**WEST VIRGINIA**  
 Office of Assessor



PRINCETON  
 Map: 16  
 Date, Aerial Photography: 2010  
 Date, Map: 9/20/2021  
 Scale: 1" = 100'