

**FOR TAX PURPOSES ONLY**

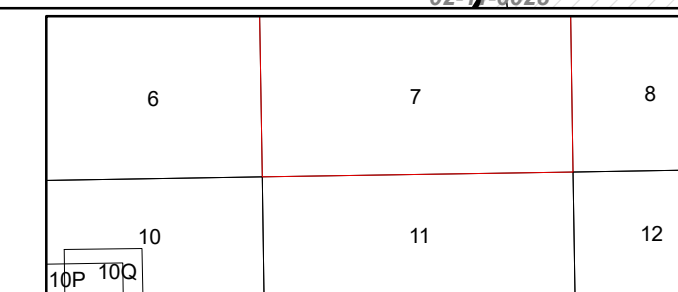
This tax map is a copy of the Assessor's official record and the reproduction, copying, distribution, or sale of such tax maps or any copies thereof without the written permission of the County Assessor is prohibited.

| Legend            |                       |
|-------------------|-----------------------|
| Property Line     | Original Lot Line     |
| Road Right of Way | Water                 |
| Railroad          | Parcel ID Number (99) |
| Parcel Hook       | Deed Lot Number (15)  |

|   |    |               |    |               |    |  |
|---|----|---------------|----|---------------|----|--|
| R | 11 | December 2012 | 9  | December 2020 | 17 |  |
| O | 2  | December 2013 | 10 | December 2021 | 18 |  |
| V | 3  | December 2014 | 11 |               | 19 |  |
| I | 4  | December 2015 | 12 |               | 20 |  |
| S | 5  | December 2016 | 13 |               | 21 |  |
| I | 6  | December 2017 | 14 |               | 22 |  |
| O | 7  | December 2018 | 15 |               | 23 |  |
| N | 8  | December 2019 | 16 |               | 24 |  |

**MINERAL COUNTY, WEST VIRGINIA**

For Tax Purposes Only  
Office of the Assessor



Created: 1/20/2022  
Scale: 1" = 400'

District: ELK  
Map: 07