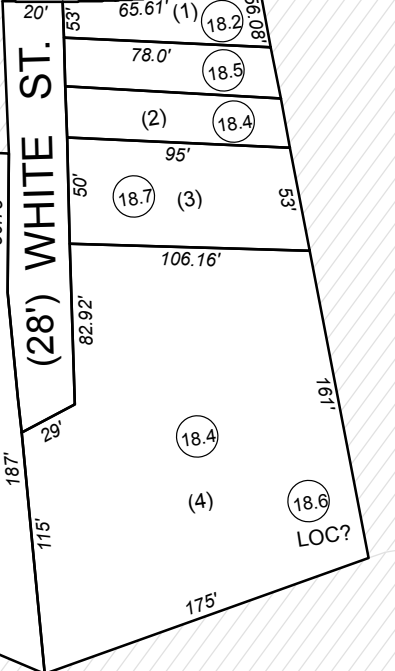


INSET A
1" = 100'



FOR TAX PURPOSES ONLY

Prepared By:

Ramona Mahon
Mingo County Assessor

Legend	
Property Line	Original Lot Line
Road Right of Way	Lot Number (15)
Corporation Line	Parcel Number (99)
District Line	Water
County Line	Railroad

R	11	Revised 1/1/18	9	17
O	2		18	
V	3		19	
I	4		20	
S	5		21	
I	6		22	
O	7		23	
N	8		24	

STATE OF WEST VIRGINIA
COUNTY OF MINGO
Office of Assessor

03-283	03-284	03-285
03-303	03-304	03-305
03-323	03-324	



HARDEE / LEE
Map: 304

Date, Aerial Photography: 2003

Date, Map: 1/10/2020

Scale: 1" = 400'