

FOR TAX PURPOSES ONLY

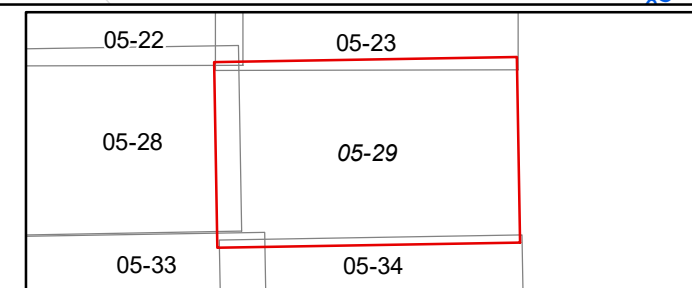
Prepared By:
Sarah Martin
 Monroe County Assessor

Legend

Property Line	—	Original Lot Line	- - - - -
Road Right of Way	—	Lot Number	(15)
Corporation Line	—	Parcel Number	(99)
District Line	- - - - -	Water	~ ~ ~ ~ ~
County Line	—	Railroad	+ + + + +

R	11	Revised 3/1/15	9	Revised 01/25/2022	17
e	2	Revised 3/1/16	10		18
v	3	Revised 12/30/2016	11		19
i	4	Revised 09/27/2017	12		20
s	5	Revised 01/25/2018	13		21
i	6	Revised 01/25/2019	14		22
n	7	Revised 01/25/2020	15		23
s	8	Revised 01/25/2021	16		24

STATE OF WEST VIRGINIA
COUNTY OF MONROE
 Office of Assessor



SPRINGFIELD
 Map: 29
 Date, Aerial Photography: 2003
 Date, Map: 1/25/2022
 Scale: 1" = 400'