

FOR TAX PURPOSES ONLY

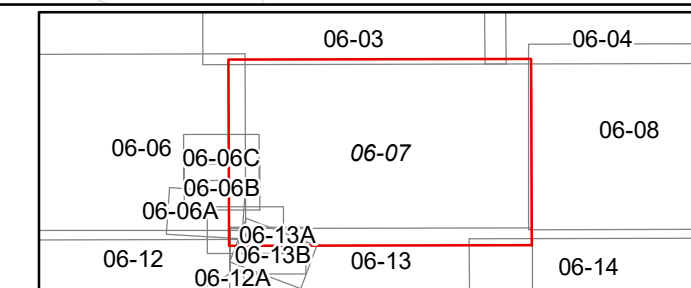
Prepared By:

Sarah Martin
Monroe County Assessor

Legend	
Property Line	Original Lot Line
Road Right of Way	Lot Number (15)
Corporation Line	Parcel Number (99)
District Line	Water
County Line	Railroad

R	1	Revised 3/1/15	9		17
Q	2	Revised 3/1/16	10		18
V	3	Revised 12/30/2016	11		19
I	4	Revised 09/27/2017	12		20
S	5	Revised 01/25/2018	13		21
J	6	Revised 01/25/2019	14		22
O	7	Revised 01/25/2020	15		23
N	8	Revised 01/25/2022	16		24

STATE OF WEST VIRGINIA
COUNTY OF MONROE
Office of Assessor



SWEET SPRINGS

Map: 07

Date, Aerial Photography: 2003

Date, Map: 1/25/2022

Scale: 1" = 400'