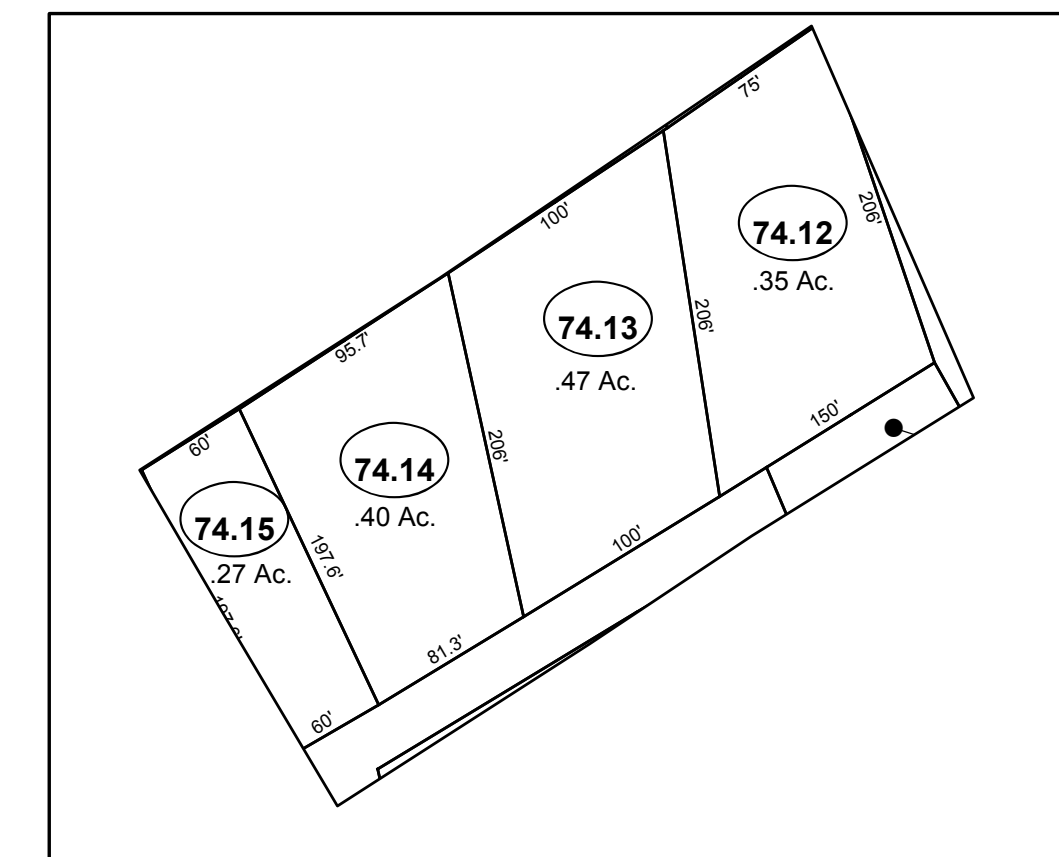


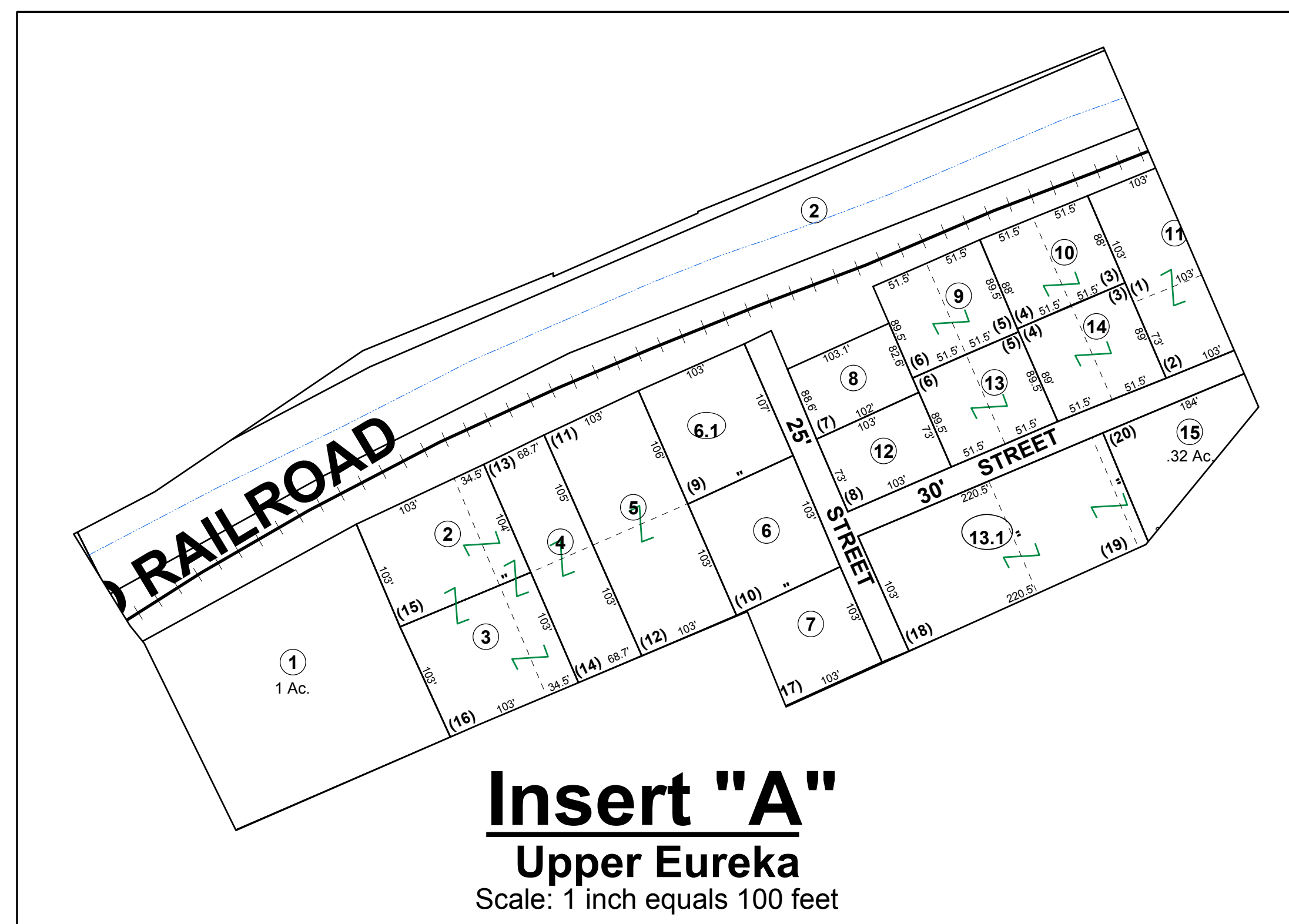
1455000 1460000 1465000

325000



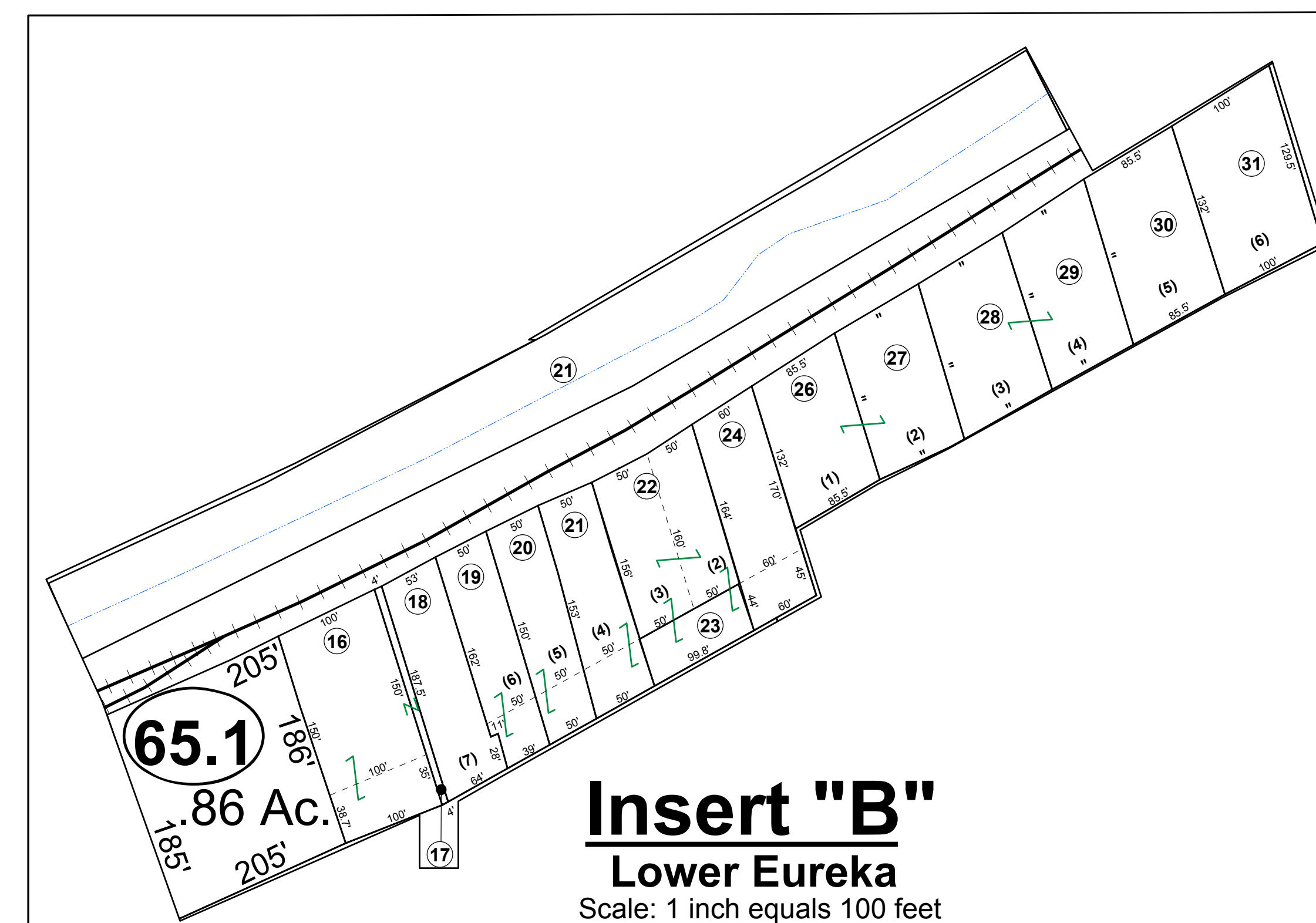
**Insert "C"**

Scale: 1 inch equals 100 feet



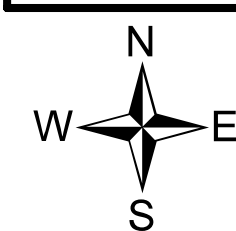
**Insert "A"**

Upper Eureka  
Scale: 1 inch equals 100 feet



**Insert "B"**

Lower Eureka  
Scale: 1 inch equals 100 feet



**FOR TAX PURPOSES ONLY**

Prepared By:  
**Vickie Gorrell**  
Pleasants County Assessor

| Legend                           |           |
|----------------------------------|-----------|
| Property Line                    | —         |
| Edge of pavement or roadway      | - - - -   |
| Corporation line                 | — · — · — |
| District line                    | — · — · — |
| County Line                      | — · — · — |
| Original Lot Line                | (15)      |
| Deed lot number (in parenthesis) | (15)      |
| Parcel or index number           | 15        |
| Improvement                      | ○         |
| Railroad                         | — · — · — |

**Restriction**  
All finished tax maps created under the provisions of legislation are the property of the county assessor who created them and the reproduction, copying, distribution, sale, or lease of such tax maps or copies thereof without the written permission of the Pleasants County Assessor is prohibited by law. The State Department of Revenue is hereby designated as an agent for all counties for the purpose of sale, reproduction and distribution of the tax maps.

| Key Map |   |   |
|---------|---|---|
| —       | — | 1 |
| —       | 2 | 3 |
| 4       | 5 | 6 |

**PLEASANTS COUNTY - WEST VIRGINIA**  
Office of Assessor

District: **02 Grant**  
Map No: **2**  
Drawn By: **Benjamin T Sweeney**  
Date: **March 16, 2021**  
Scale: **1 inch = 100 feet**