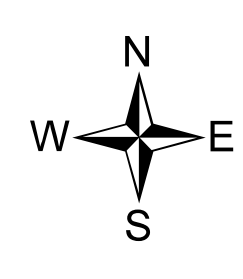
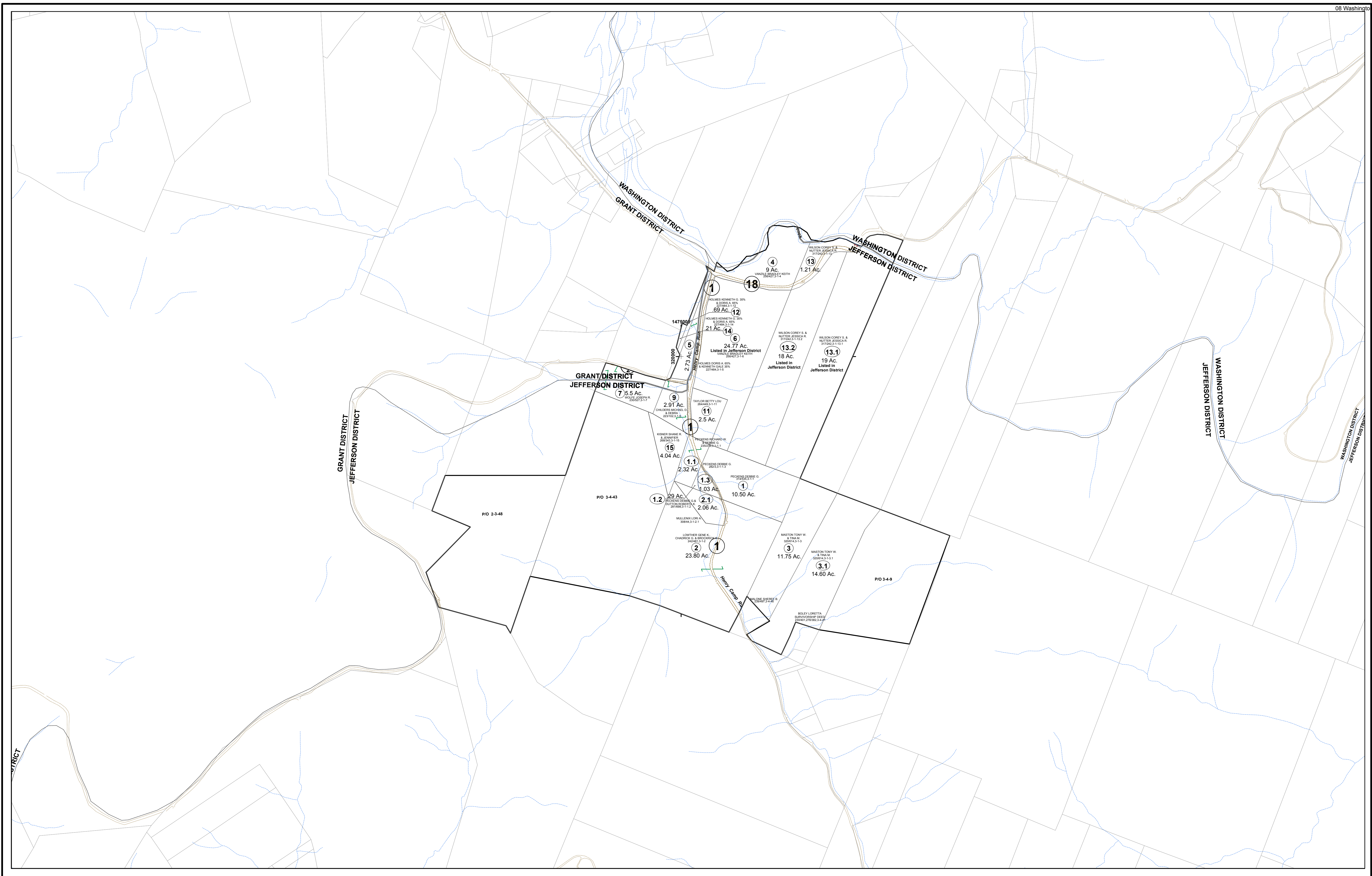


03 Jefferson - 1



FOR TAX PURPOSES ONLY
 Prepared By:
Vickie Gorrell
 Pleasants County Assessor

Legend	
Property Line	—————
Edge of pavement or roadway	- - - - -
Corporation line
District line
County Line
Original Lot Line	-----
Deed lot number (in parenthesis)	(15)
Parcel or index number	⑬
Improvement	○
Railroad	—————

Restriction	

Key Map		
G-3	W-6	W-6
3	1	W-6
G-6	4	5

PLEASANTS COUNTY - WEST VIRGINIA
 Office of Assessor

District: 03 Jefferson
 Map No: 1
 Drawn By: Benjamin T Sweeney
 Date: March 16, 2021
 Scale: 1 inch = 400 feet