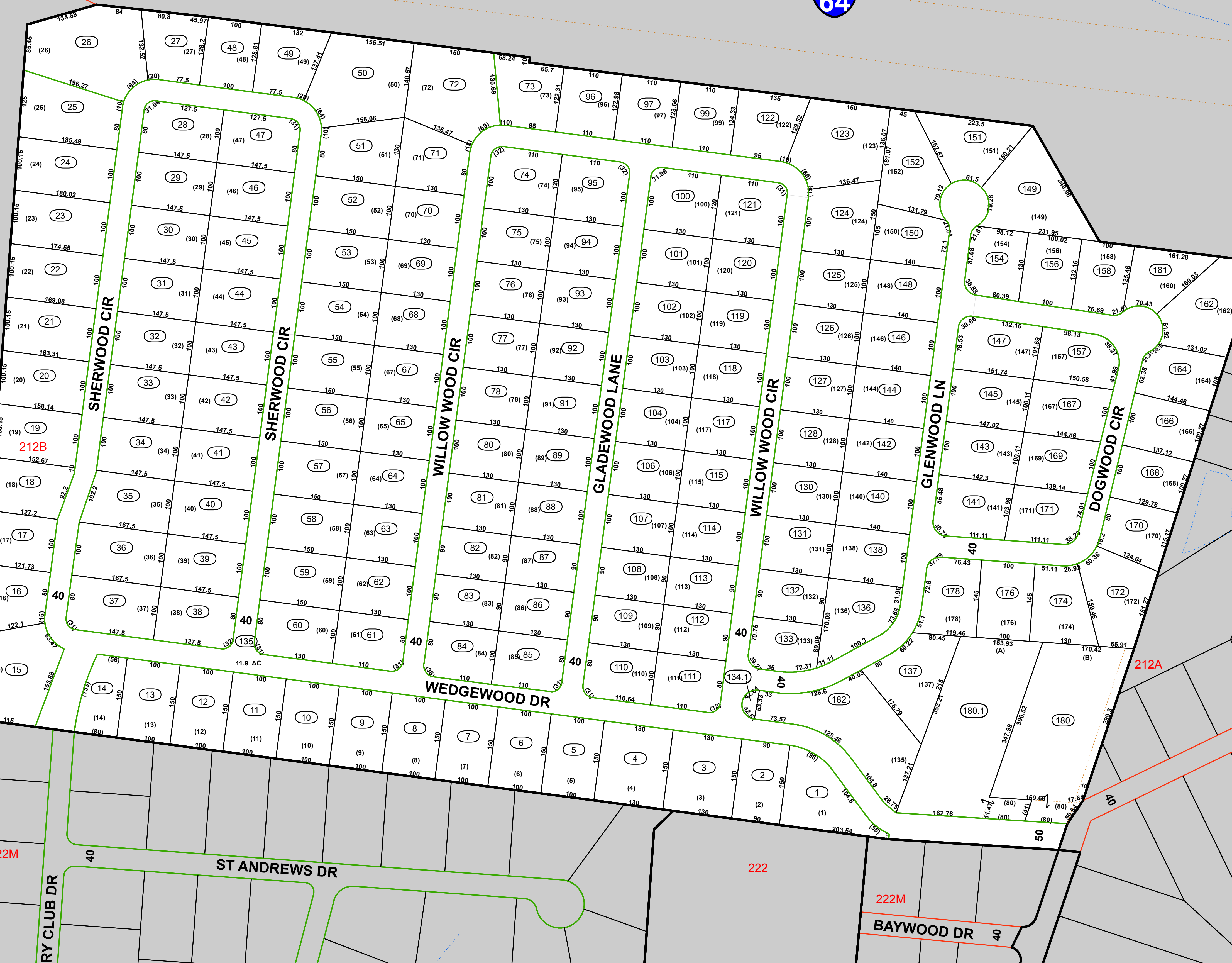




212



PREPARED BY
THE MAPPING / GIS STAFF OF:
GARY WARNER
PUTNAM COUNTY ASSESSOR
3389 WINFIELD ROAD
WINFIELD, WV 25213
PHONE: (304) 586-0206
FAX: (304) 586-0226

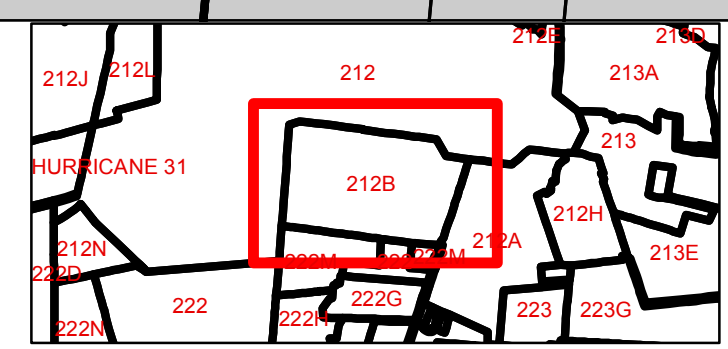
FOR TAX PURPOSES ONLY
ALL TAX MAPS CREATED UNDER THE PROVISIONS OF REAPPRAISAL LEGISLATION ARE THE PROPERTY OF PUTNAM COUNTY WEST VIRGINIA AND THE REPRODUCTION, COPYING, DISTRIBUTION OR SALE OF SUCH TAX MAPS OR ANY COPIES THEREOF WITHOUT THE WRITTEN PERMISSION OF THE PUTNAM COUNTY ASSESSOR IS PROHIBITED BY LAW.

LEGEND

Road ROW	Parcel Hook	Utility_Easement
Parcel Boundary	Lot line/Easement	Parcel Number
Road-Rail ROW	Parcel-Road ROW	Routing Number
District	MapBooks	Deed Lot Number
Rivers/Lakes		

Revisions

1.	10/26/2021 UPDATE (JSH)
2.	1/1/2019 UPDATE SUPPLIED TO STATE (JSH)
3.	1/14/2015 UPDATE SUPPLIED TO STATE (BAS)
4.	1/7/2016 UPDATE SUPPLIED TO STATE (BAS)
5.	1/7/2017 UPDATE SUPPLIED TO STATE (BAS)
6.	2/14/2017
7.	1/8/18 UPDATE SUPPLIED TO STATE (JSH)



PUTNAM COUNTY
STATE OF WEST VIRGINIA
OFFICE OF ASSESSOR

Sheet No.: **212B**
District: SCOTT
Date, Aerial Photography: 2021
Scale: 1" = 100'