

SOPHIA CORPORATION

COALFIELD

TOWN DISTRICT  
SOPHIA CORPORATION

TOWN DISTRICT  
SLAB FORK DISTRICT  
SOPHIA CORPORATION

ROBERT C BYRD DR

SOPHIA CORPORATION  
SLAB FORK DISTRICT

HIGH ST 2<sup>nd</sup>  
VALLEY RD

**FOR TAX PURPOSES ONLY**  
Prepared By:  
Raleigh County Assessor's Office  
Beckley, WV

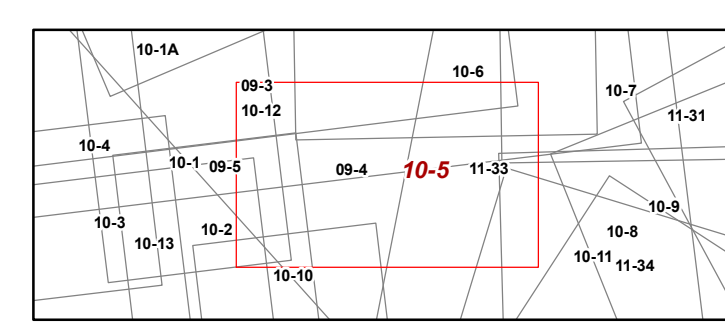
**RESTRICTION**  
ALL TAX MAPS CREATED UNDER THE PROVISIONS OF REAPPRAISAL LEGISLATION ARE THE PROPERTY OF RALEIGH COUNTY, WEST VIRGINIA. THE REPRODUCTION, COPYING, DISTRIBUTION, OR SALE OF SUCH TAX MAPS OR ANY COPIES THEREOF WITHOUT THE WRITTEN PERMISSION OF THE RALEIGH COUNTY ASSESSOR IS PROHIBITED BY LAW.

1	10/07/96 CLG	9	05/11/15 JLW	17	
2	04/02/01 CLG	10	05/11/15 JLW	18	
3	10/26/05 CLG	11	08/26/2021 AGD	19	
4	03/27/06 CLG	12		20	
5	01/18/07 CLG	13		21	
6	10/30/07 ADL	14		22	
7	07/05/08 ADL	15		23	
8	09/24/10 TPB	16		24	

**Legend**

Property Line	Original Lot Line	(15)
Road Right of Way	Lot Number	99
Corporation Line	Parcel Number	
District Line	Water	
County Line	Railroad	

1 inch = 100 feet



**COUNTY OF RALEIGH  
OFFICE OF ASSESSOR  
BECKLEY, WEST VIRGINIA**

SOPHIA CORPORATION  
Map: 5  
Date, Aerial Photography: 2018  
Date, Map: 8/30/2021