

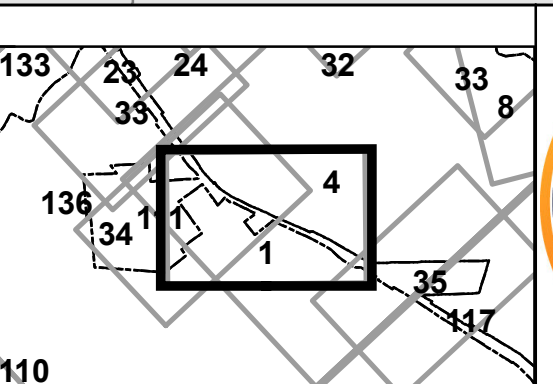
**FOR TAX PURPOSES ONLY**  
**LANDMARK**  
 geospatial

Legend	
	District Boundary
	Previous Deed
	Property
	Road Easement
	Railroad Right of Way
	Road Right of Way
	River
	Deed lot Number (15)
	Parcel or Index Number (9)
	UNKNOWN
	Improvement
	Cemetery
	School
	Church

**Restriction**

All tax maps created under the provisions of reappraisal legislation are the property of the Assessor of Randolph County, West Virginia and the reproduction, copying, modification, distribution or sale of such tax maps or any copies thereof without the written permission of the Randolph County Assessor is prohibited by law.

Revisions			
1	6-30-1964	10	OGIS T.R.L. 5-6-1993
2	T.R.L. 11-18-1980	11	OGIS J.E.B. 4-20-1995
3	T.R.L. 7-1983	12	OGIS J.E.B. 5-1-1996
4	N.C.S. 7-1-1984	13	SLS INC. J.W.M. 3-1997
5	T.R.L. 7-1985	14	P.K.Y. 7-1-1998
6	T.R.L. 7-1986	15	A.K.B. 7-1-2008
7	D.F. 7-1-1989	16	A.K.B. 7-1-2009
8	OGIS 3-4-1991	17	A.L.L. 7-1-2010
9	OGIS T.L. 4-30-1992	18	S.T.P. 7-1-2013
19	S.T.P. 7-1-2014	28	
20		29	
21		30	
22		31	
23		32	
24		33	
25		34	
26		35	
27		36	



**RANDOLPH COUNTY BEVERLY**  
 Assessor's Office  
 Phyllis K. Yokum, Assessor  
 ELKINS, WV

District 02 Map No. 1  
 Date of Publication: 1/18/2022  
 Scale: 1"=100'