

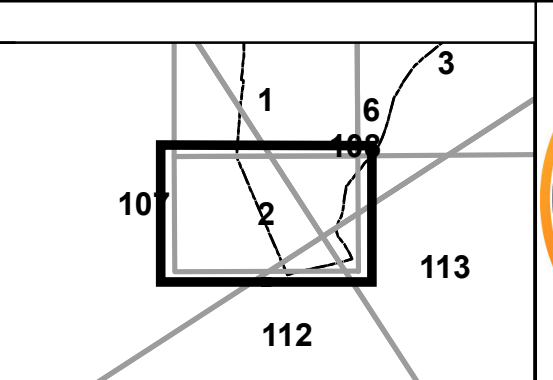
FOR TAX PURPOSES ONLY
LANDMARK
 geospatial

Legend	
	District Boundary
	Previous Deed
	Property
	Road Easement
	Railroad Right of Way
	Road Right of Way
	River
	Deed lot Number (15)
	Parcel or Index Number (9)
	UNKNOWN
	Improvement
	Cemetery
	School
	Church

Restriction

All tax maps created under the provisions of reappraisal legislation are the property of the Assessor of Randolph County, West Virginia and the reproduction, copying, modification, distribution or sale of such tax maps or any copies thereof without the written permission of the Randolph County Assessor is prohibited by law.

Revisions					
1	6-30-1964	10	SLS INC. J.W.M. 3-1997	19	28
2	T.R.L. 7-1980	11			29
3	D.F. 7-1-1983	12			30
4	T.R.L. 7-1986	13			31
5	D.F. 7-1-1988	14			32
6	OGIS D.S.H. 2-17-1991	15			33
7	OGIS T.L. 4-30-1992	16			34
8	OGIS S.A.J. 4-30-1993	17			35
9	OGIS J.E.B. 5-1-1996	18			36



RANDOLPH COUNTY
 Assessor's Office
 Phyllis K. Yokum, Assessor
 ELKINS, WV

HUTTONSVILLE CORP
 District 08 Map No. 2
 Date of Publication: 1/18/2022
 Scale: 1"=100'