

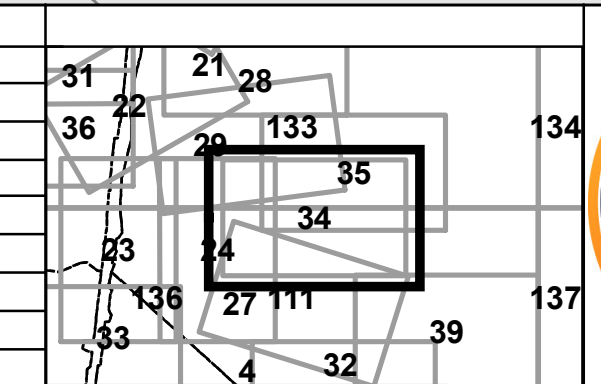
**FOR TAX PURPOSES ONLY**  
**LANDMARK**  
 geospatial

Legend	
	District Boundary
	Previous Deed
	Property
	Road Easement
	Railroad Right of Way
	Road Right of Way
	River
	Deed lot Number (15)
	Parcel or Index Number (9)
	UNKNOWN
	Improvement
	Cemetery
	School
	Church

**Restriction**

All tax maps created under the provisions of reappraisal legislation are the property of the Assessor of Randolph County, West Virginia and the reproduction, copying, modification, distribution or sale of such tax maps or any copies thereof without the written permission of the Randolph County Assessor is prohibited by law.

Revisions	
1	D.R. 7-1-1988
2	D.E.F. 3-27-1988
3	R.E.B. 7-1-1989
4	OGIS 3-2-1991
5	OGIS J.E.B. 4-15-1992
6	OGIS S.A.J. 5-3-1993
7	OGIS R.R.O. 3-1994
8	OGIS J.E.B. 4-20-1995
9	OGIS J.E.B. 5-1-1996
10	SLS INC. J.W.M. 4-1997
11	P.K.Y. 7-1-2000
12	A.K.B. 7-1-2001
13	A.K.B. 7-1-2005
14	A.K.B. 7-1-2008
15	S.T.P. 5-18-2017
16	
17	
18	
19	
20	
21	
22	
23	
24	
25	
26	
27	
28	
29	
30	
31	
32	
33	
34	
35	
36	



**RANDOLPH COUNTY LEADSVILLE**  
 Assessor's Office  
 Phyllis K. Yokum, Assessor  
 ELKINS, WV

District 10 Map No. 34  
 Date of Publication: 1/18/2022  
 Scale: 1"=100'