

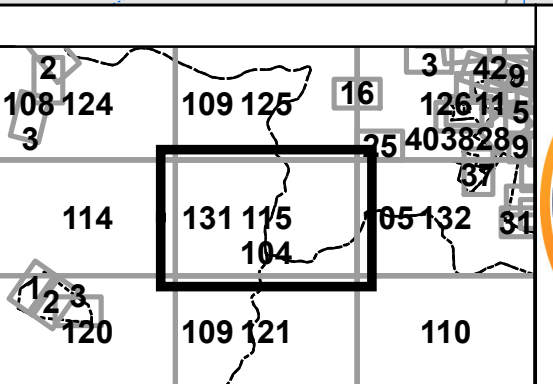
FOR TAX PURPOSES ONLY
LANDMARK
 geospatial

Legend	
	District Boundary
	Property
	Road Easement
	Railroad Right of Way
	Road Right of Way
	River
	Deed lot Number (15)
	Parcel or Index Number
	UNKNOWN
	Improvement
	Cemetery
	School
	Church

Restriction

All tax maps created under the provisions of reappraisal legislation are the property of the Assessor of Randolph County, West Virginia and the reproduction, copying, modification or sale of such tax maps or any copies thereof without the written permission of the Randolph County Assessor is prohibited by law.

Revisions					
1	6-30-1964	10	OGIS J.E.B. 3-15-1994	19	28
2	D.R. 7-1980	11	OGIS J.E.B. 5-1-1996	20	29
3	N.S. 4-1981	12		21	30
4	L.E.S. 7-1-1983	13		22	31
5	C.P. 7-1-1985	14		23	32
6	D.F. 7-1-1988	15		24	33
7	OGIS 3-3-1991	16		25	34
8	OGIS J.E.B. 4-15-1992	17		26	35
9	OGIS J.E.B. 4-26-1993	18		27	36



RANDOLPH COUNTY
 Assessor's Office
 Phyllis K. Yokum, Assessor
 ELKINS, WV

LEADSVILLE
 District 10 Map No. 131
 Date of Publication: 1/18/2022
 Scale: 1"=400'