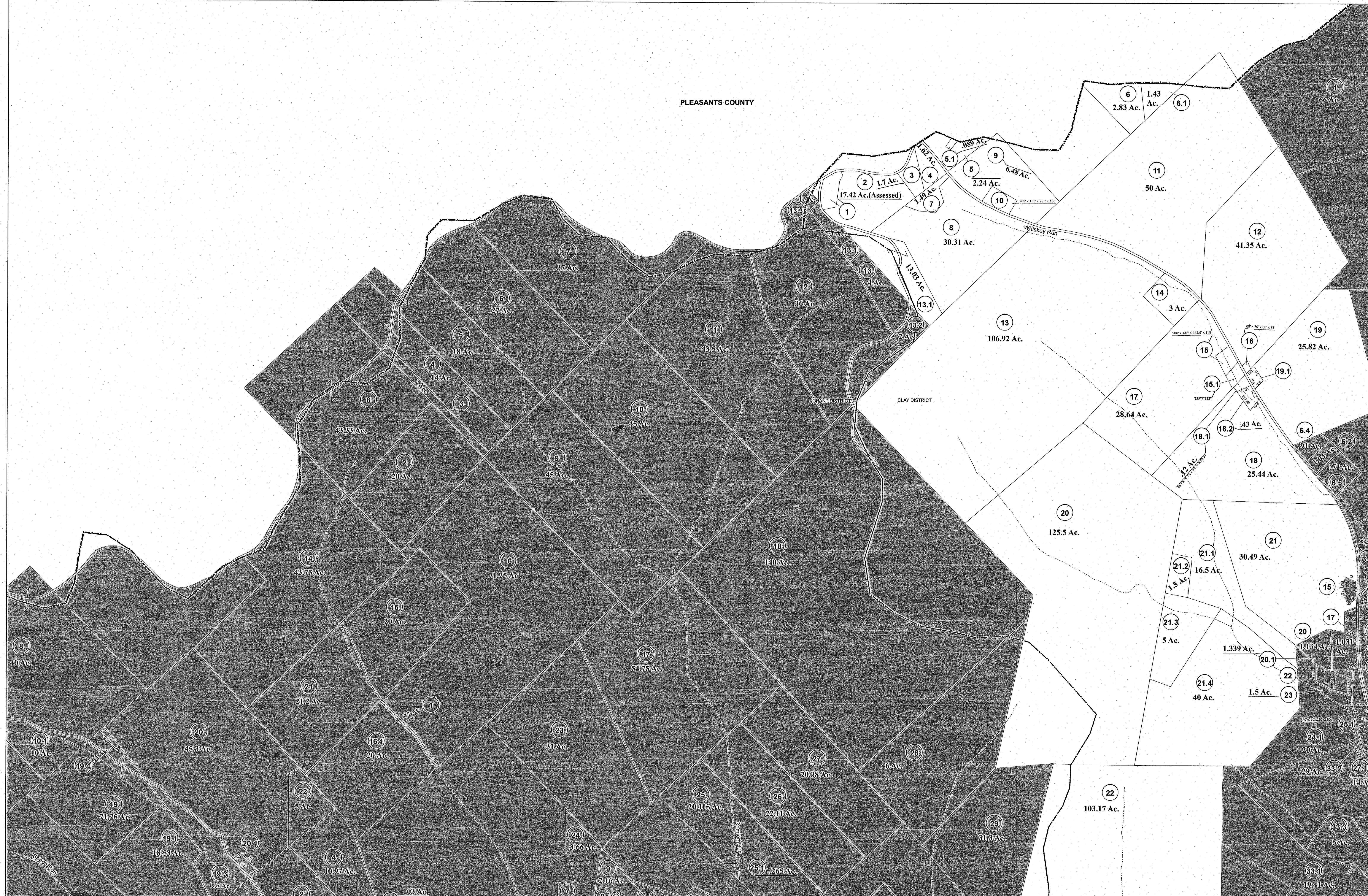


PLEASANTS COUNTY



FOR TAX PURPOSES ONLY

Prepared by  
**RITCHIE COUNTY**  
**ASSESSOR'S OFFICE**  
**ARLENE MOSSER, ASSESSOR**  
**HARRISVILLE, W.Va.**

LEGEND

Property line	—	Original lot line	- - - - -
Edge of pavement or roadway	—	Deed lot number	(15)
Corporation line	—	Parcel or index number	99
District line	—	Improvement	o
County line	—	Railroad	—
Waterways	—		

REVISIONS

1.	7/1/89 REB
2.	5/17/2011 RT1
3.	
4.	
5.	
6.	
7.	
8.	
9.	

RESTRICTION

All finished tax maps created under the provisions of legislation are the property of the Ritchie County Assessor and the reproduction, copying, distribution, sale, or lease of such tax maps or copies thereof without the written permission of the Ritchie County Assessor is prohibited by law.

KEY MAP

3	4	10	11
---	---	----	----

Ritchie County  
 Office of Assessor  
**HARRISVILLE, W.Va.**

CLAY DISTRICT

District : 03      Map No : 10

Date, Aerial Photography : APRIL, 1962      Date, Map : JAN., 1964  
 Photo No : 72      Scale : 1"=400'