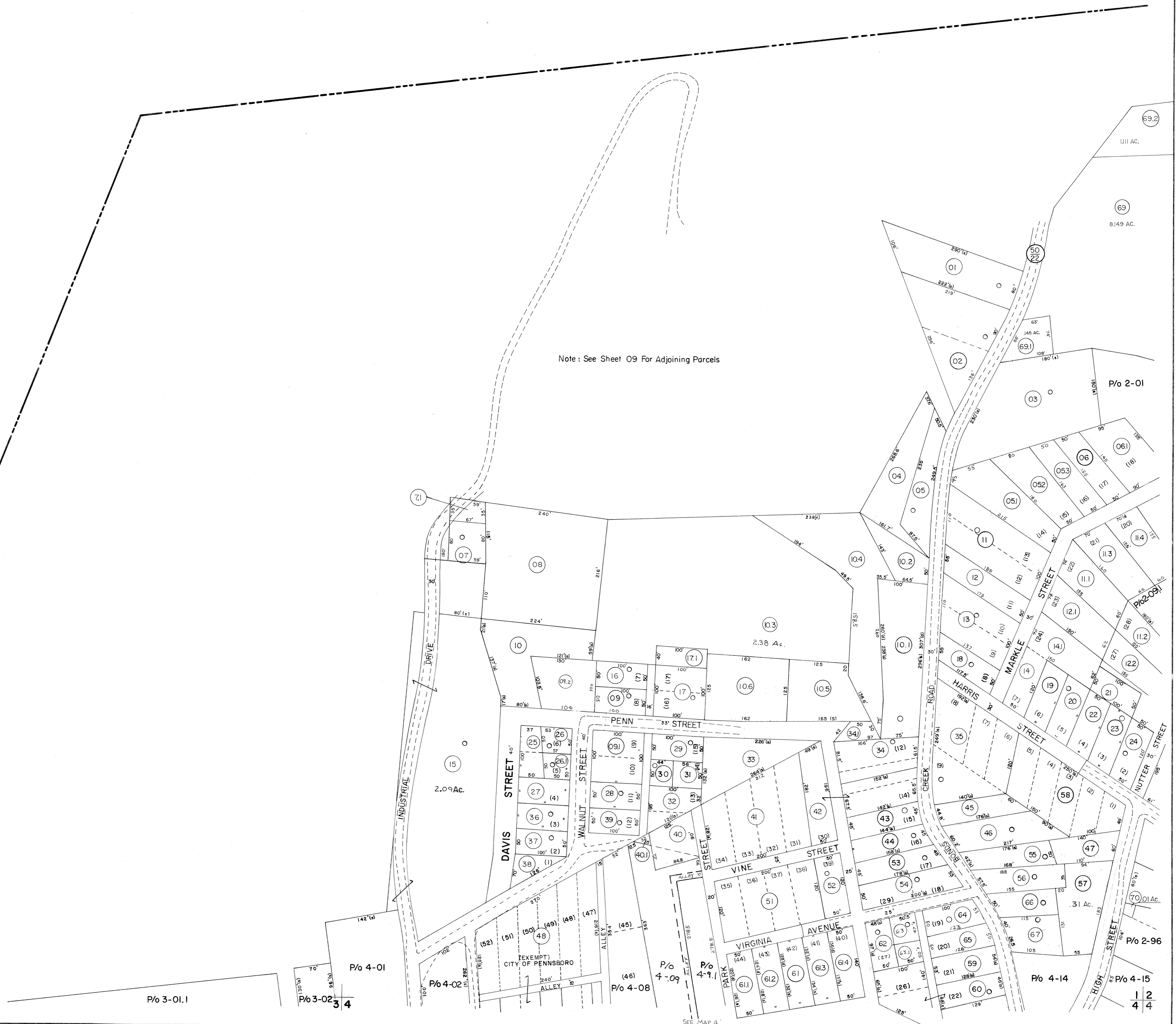


CLAY DISTRICT

Note: See Sheet 09 For Adjoining Parcels



FOR TAX PURPOSES ONLY

Prepared by
L. ROBERT KIMBALL
 Consulting Engineer
 Ebensburg, Pennsylvania

Legend	
Property line	—
Edge of pavement or roadway	—
Corporation line	—
District line	—
County line	—
Original lot line
Deed lot number in parenthesis	(15)
Parcel or index number in circle	(99)
Improvement	○
Railroad	+

Revisions					
1	REVISED 8/3/64	7	July, 1967	TRL	17
2	5-10-72	8	JHP		18
3	1-12-76	9	T.G.		19
4	4-25-77	10	SRJ		20
5	3-21-80	11	MOS		21
6	Revised to 7-1-88	12	ES1		22
7	Revised to 7-1-88	13	ES1	2/20/02	23
8	Revised to 7-1-86	14			24

STATE OF WEST VIRGINIA
 COUNTY OF RITCHIE
 Office of Assessor

PENNSBORO CORPORATION
SHEET 01

Date, Aerial Photography: APRIL, 1962
 Photo No: 12
 Date, Map: DEC., 1962
 Scale: 1" = 100'