

FOR TAX PURPOSES ONLY

Prepared By:

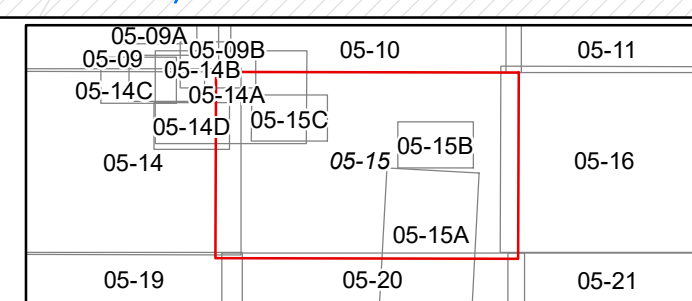
Greg Vandall
Summers County Assessor

Legend

Property Line	Original Lot Line
Road Right of Way	Lot Number (15)
Corporation Line	Parcel Number (99)
District Line	Water
County Line	Railroad

R	1	Revised 6/3/16	9	17
0	2	Revised 12/30/2016	10	18
V	3	Revised 02/26/2018	11	19
I	4	Revised 02/24/2021	12	20
S	5	Revised 01/27/2022	13	21
J	6		14	22
O	7		15	23
N	8		16	24

STATE OF WEST VIRGINIA
COUNTY OF SUMMERS
Office of Assessor



JUMPING BRANCH DISTRICT
Map: 15
Date, Aerial Photography: 2003
Date, Map: 1/31/2022
Scale: 1" = 400'