

FOR TAX PURPOSES ONLY

Legend

- District Boundary
- Previous Deed
- Property
- Road Easement
- Railroad Right of Way
- Road Right of Way
- River

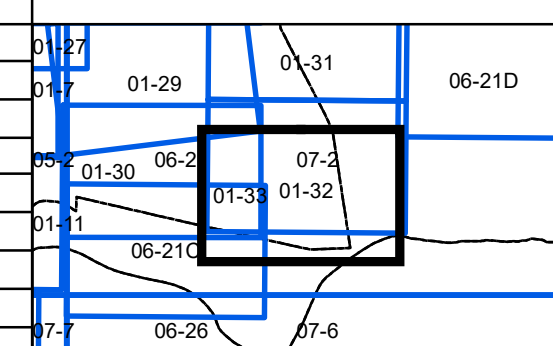
- Deed lot Number (15)
- Parcel or Index Number (9)
- Unknown (Z)
- Improvement (I)
- Cemetery (C)
- Church (CH)
- Educational (E)

Restriction

REPRODUCTION OF TAX MAPS PROHIBITED - It is unlawful to copy, photocopy, scan, photograph, or otherwise reproduce this tax map. Pursuant to the provisions of W.Va. CSR § 189-5-5 (2013) no person may reproduce, copy, distribute or sell copies of tax maps prepared by the counties without having first obtained the written permission of the Taylor County Assessor. In addition to other penalties and civil remedies, any person who, without the written permission of the Taylor County Assessor, reproduces, copies, distributes, or sells or who allows the reproduction, copying, distribution or sale of tax maps prepared by the Taylor County Assessor, shall be refused permission by the Taylor County Assessor or Assessor's agent to purchase tax maps in the future.

Revisions

1	Revised 12/30/2016	10	19	28
2	Revised 12/30/2019	11	20	29
3	Revised 02/17/2021	12	21	30
4	Revised 01/20/2022	13	22	31
5		14	23	32
6		15	24	33
7		16	25	34
8		17	26	35
9		18	27	36



Taylor County
 Assessor's Office
 Christa Kinsey, Assessor
 Grafton, WV

GRAFTON CORP
 District: 01 Map No: 33
 Date of Publication: 1/20/2022
 Scale: 1" = 200'