

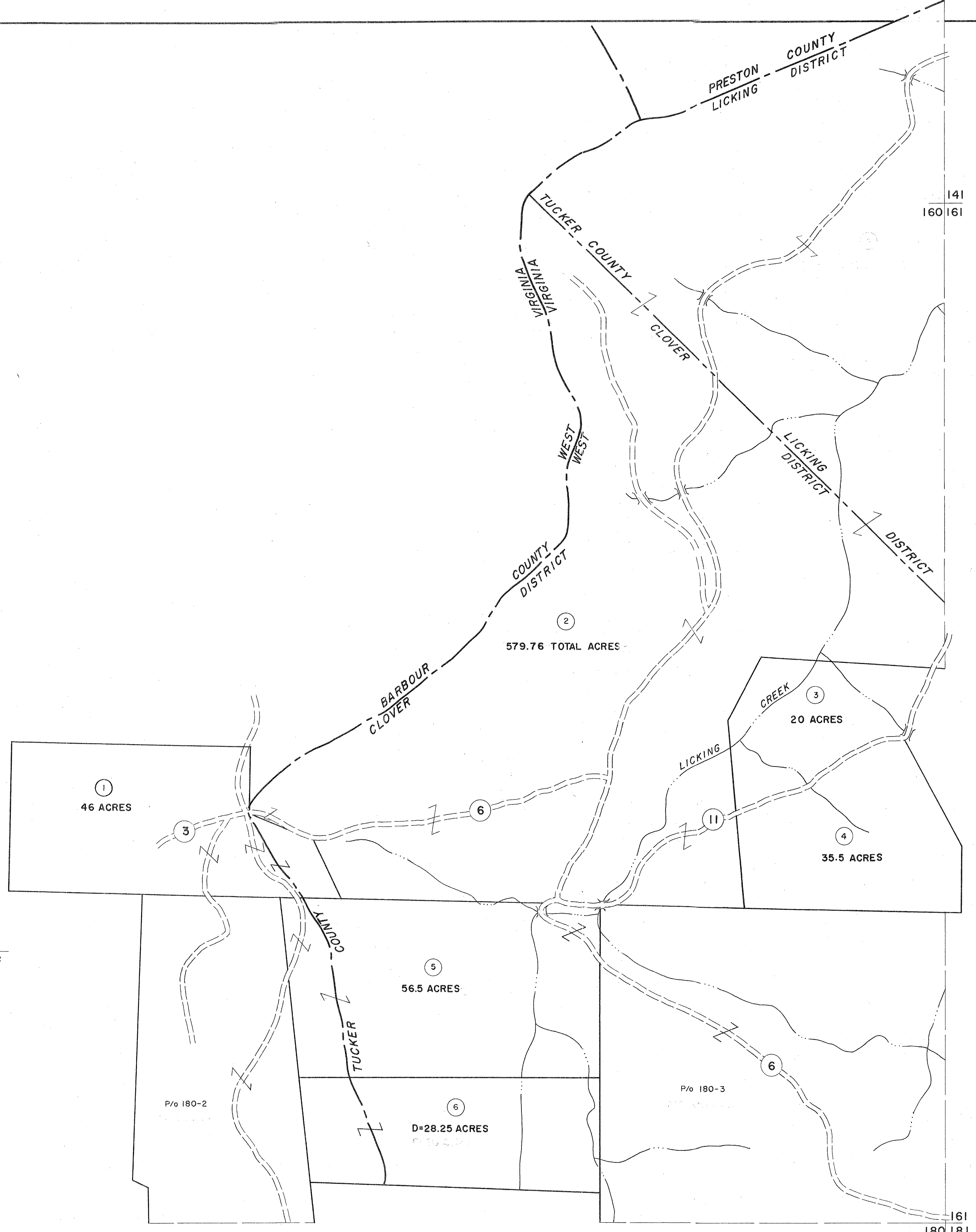
160

141
160 161

P P
4 12

160
180

161
180 181

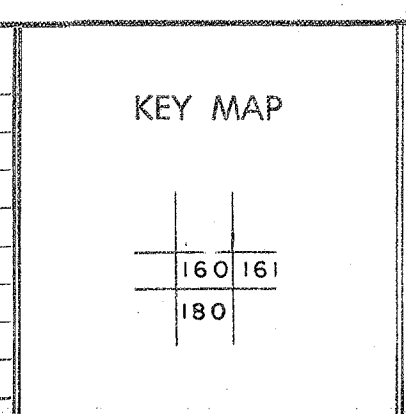


For Tax Purposes Only

Prepared by
MICHAEL BAKER, JR., INC.
 Consulting Engineers
 Rochester, Pennsylvania

Legend	
Property line	—————
Edge of pavement or roadway	- - - - -
Corporation line	- · - · -
District line	- - - - -
County line	- - - - -
Original lot line	—————
Deed lot number	(15)
Parcel or index number	(99)
Improvement	o
Railroad	—+—+—+—

Revisions			
1	REVISED TO 7-1-83	2	17
2	OGIS 12/30/90 DSH	3	18
3	OGIS 3-19-92 TL	4	19
4	3/24/07 S & H	5	20
5		6	21
6		7	22
7		8	23
8			24



TUCKER COUNTY
 STATE OF WEST VIRGINIA
 Office of Assessor

DISTRICT **LICKING CLOVER**

SHEET NO: 160

Date, Aerial Photography: November, 1961 Date, Map: Dec. 1962
 Photo No: Scale: 1" = 400'