

FOR TAX PURPOSES ONLY

Prepared By:
James 'Chris' Michael
Tucker County Assessor

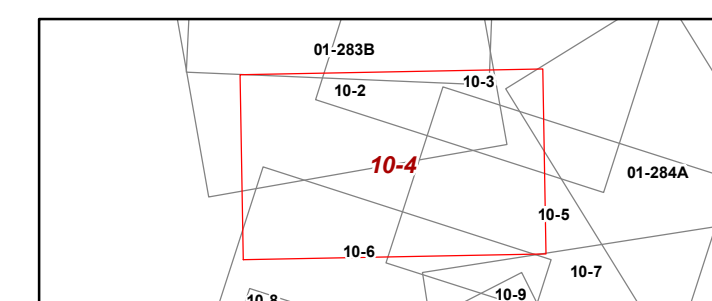
Property Line
Road Right of Way
Corporation Line
District Line
County Line

Legend

Original Lot Line
Lot Number (15)
Parcel Number (99)
Railroad

R	1	Revised 6/28/2021	9	17
e	2		10	18
v	3		11	19
i	4		12	20
s	5		13	21
i	6		14	22
o	7		15	23
n	8		16	24

STATE OF WEST VIRGINIA
COUNTY OF TUCKER
Office of Assessor



PARSONS CORPORATION
Map: 4
Date, Aerial Photography: 2019
Date, Map: 5/5/2022
Scale: 1 inch = 100 feet