

THIS DOCUMENT IS A TAX MAP. It is compiled for the purpose of taxation from available record evidence and has not been field verified. It is not a valid survey plat. The existence of data on this map does not imply any "official" status to such data. The Upshur County Assessor's Office assumes no liability that might result from the inappropriate use of this document.

RESTRICTIONS: All tax maps created under the provisions of the reappraisal legislation are the property Assessor of Upshur County, West Virginia and the reproduction, copying, modification, distribution, or sale of any copies thereof without the written permission of the Upshur County Assessor is prohibited by law.

Upshur County Assessor's Office  
 Dustin Zickfoose-Assessor  
 Junior Mcgee-Mapper

Revised 10/26/2018			
Revised 1/30/2019			
Revised 1/30/2021			

STATE OF WEST VIRGINIA  
 COUNTY OF UPSHUR  
 Office of Assessor

Legend

Property Line ————

Corporation Line ————

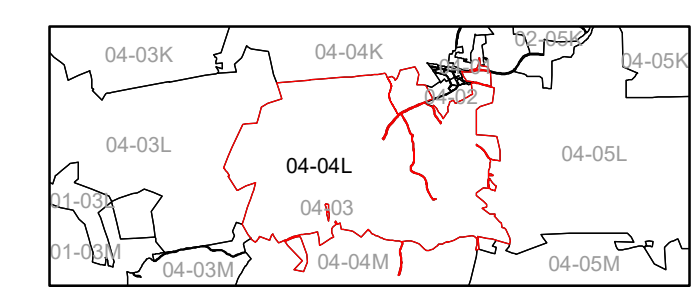
County Line ————

Lot Line (15) - - - - -

Parcel Number (99) ————

Water ————

Railroad ————



MEADE DISTRICT  
 Map: 04L  
 Date, Map: 2/9/2021  
 Scale: 1" = 400'