

THIS DOCUMENT IS A TAX MAP. It is compiled for the purpose of taxation from available record evidence and has not been field verified. It is not a valid survey plat. The existence of data on this map does not imply any "official" status to such data. The Upshur County Assessor's Office assumes no liability that might result from the inappropriate use of this document.

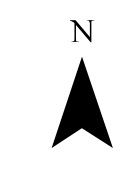
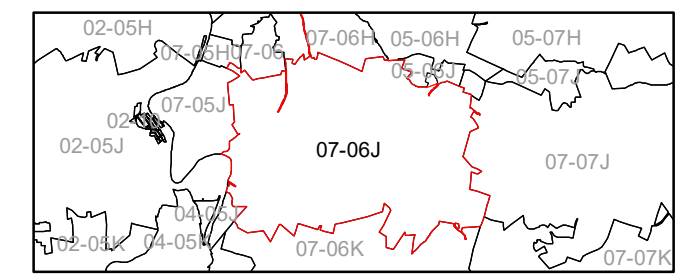
RESTRICTIONS: All tax maps created under the provisions of the reappraisal legislation are the property Assessor of Upshur County, West Virginia and the reproduction, copying, modification, distribution, or sale of any copies thereof without the written permission of the Upshur County Assessor is prohibited by law.

Upshur County Assessor's Office
Dustin Zickfoose-Assessor
Junior Mcgee-Mapper

Revised 10/26/2018			
Revised 1/30/2019			
Revised 1/30/2021			
Revised 1/30/2022			

STATE OF WEST VIRGINIA
COUNTY OF UPSHUR
Office of Assessor

Legend	
Property Line	—
Corporation Line	—
County Line	—
Lot Line	— (15)
Lot Number	— (99)
Parcel Number	—
Water	—
Railroad	—



WASHINGTON DISTRICT
Map: 06J
Date: 1/26/2022
Scale: 1" = 400'