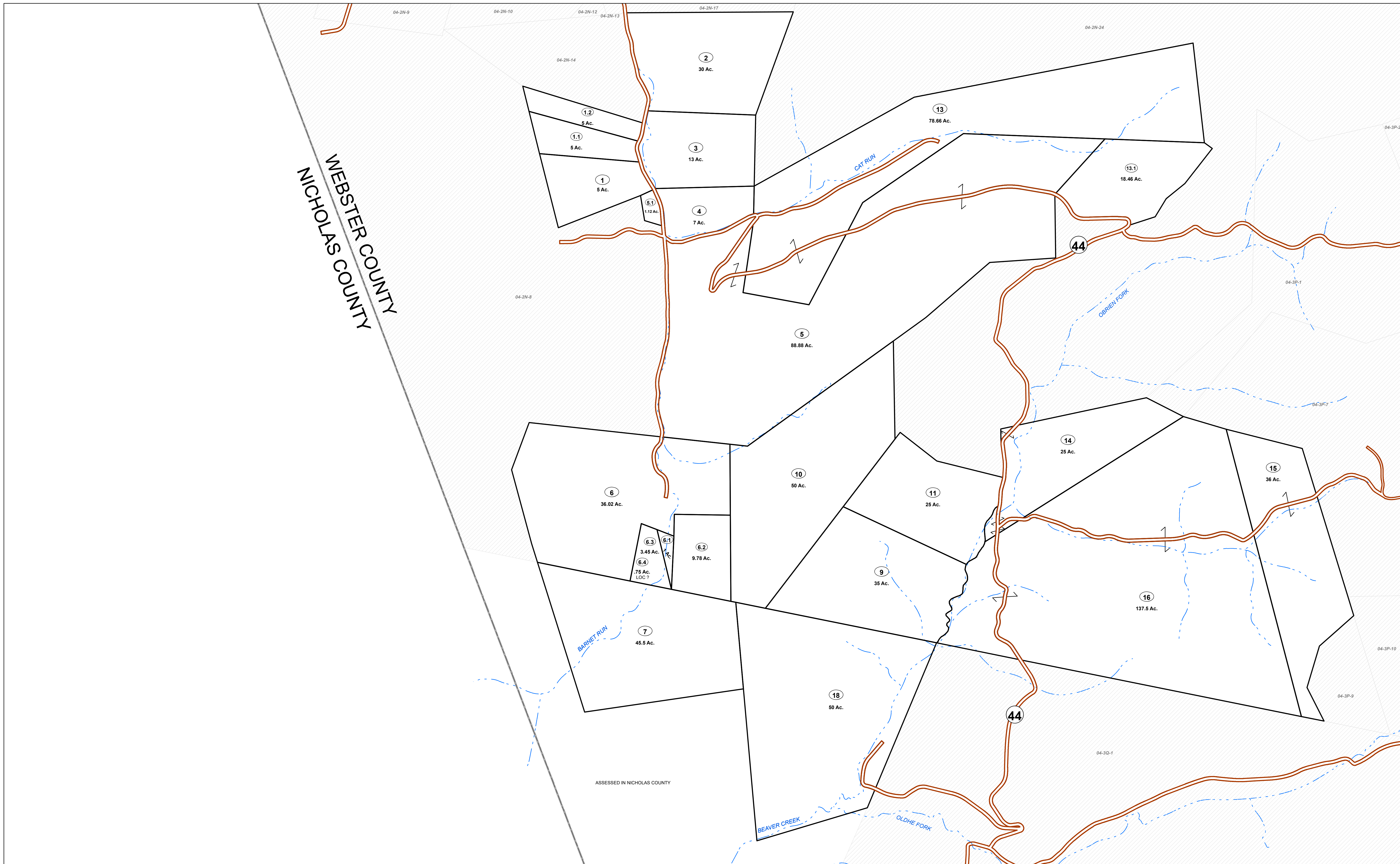


WEBSTER COUNTY
NICHOLAS COUNTY



FOR TAX PURPOSES ONLY

Prepared By:
Max Cochran
Webster County Assessor

Legend	
Property Line	Original Lot Line
Road Right of Way	Lot Number (15)
Corporation Line	Parcel Number (99)
District Line	Water
County Line	Railroad

R	1	Revised 04/01/2018	9		17
O	2	Revised 01/22/2020	10		18
V	3	Revised 03/17/2021	11		19
I	4	Revised 01/22/2022	12		20
S	5		13		21
I	6		14		22
O	7		15		23
N	8		16		24

STATE OF WEST VIRGINIA
COUNTY OF WEBSTER
Office of Assessor

04-1N	04-2N	04-3N
	04-2P	04-3P
	04-2Q	04-3Q



GLADE
Map: 2P

Date, Aerial Photography: 2003

Date, Map: 1/27/2022

Scale: 1" = 400'