

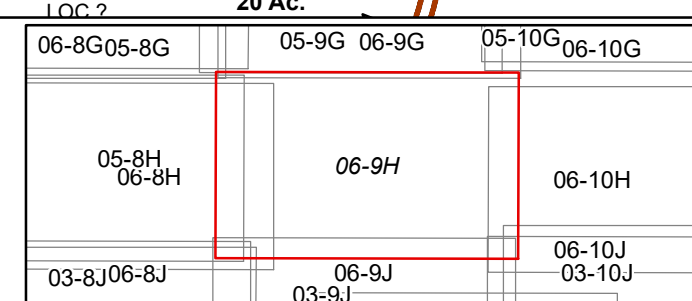
FOR TAX PURPOSES ONLY

Prepared By:
Max Cochran
 Webster County Assessor

Legend
 Property Line ———— Original Lot Line - - - - -
 Road Right of Way ———— Lot Number (15)
 Corporation Line - - - - - Parcel Number (99)
 District Line - - - - - Water - - - - -
 County Line - - - - - Railroad - - - - -

R	1	Revised 04/01/2018	9	17
G	2	Revised 01/22/2020	10	18
V	3	Revised 02/17/2021	11	19
I	4	Revised 01/22/2022	12	20
S	5		13	21
I	6		14	22
O	7		15	23
N	8		16	24

STATE OF WEST VIRGINIA
COUNTY OF WEBSTER
 Office of Assessor



HOLLY
 Map: 9H
 Date, Aerial Photography: 2003
 Date, Map: 1/27/2022
 Scale: 1" = 400'