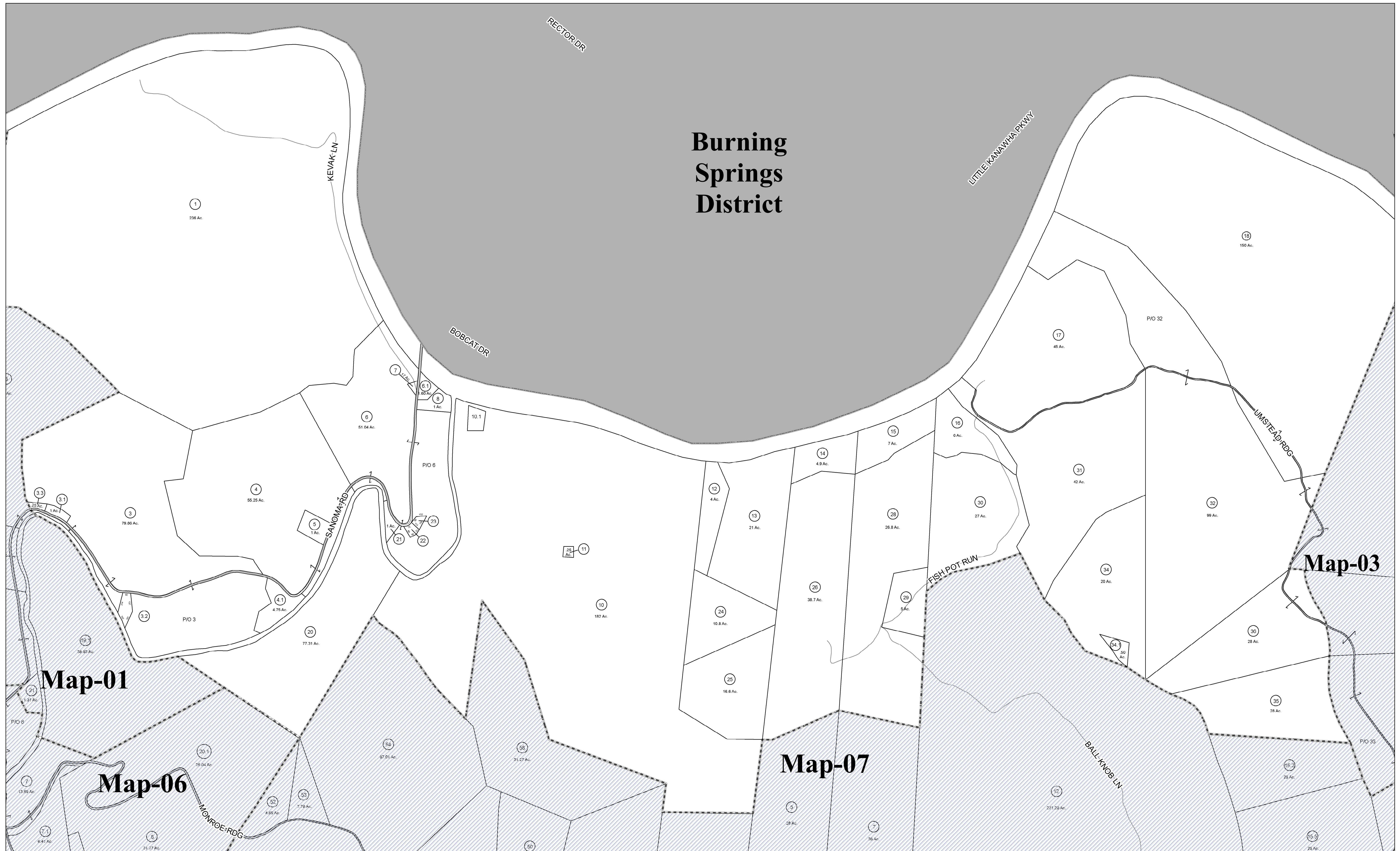


Burning Springs District



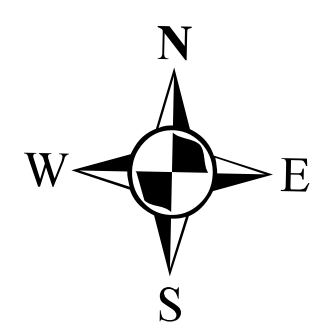
FOR TAX PURPOSES ONLY

PREPARED BY

WIRT COUNTY ASSESSORS OFFICE

All finished tax maps created by provision of West Virginia law and are the property of the county assessors who created them. The reproduction, copying, distribution, sale or lease of such maps or copies thereof without the written permission of the respective county assessor is prohibited by law

Legend	
Parcel Boundaries	Lot Number (15)
Lot Line	Parcel ID Number (125)
Leader Line	Block Number (A)
District Line	Stream
Railroad Center Line	Creek / River
	Map Boundary



WIRT COUNTY

D. KEITH WILSON JR- ASSESSOR

ELIZABETH, WEST VIRGINIA

Coordinate System: NAD 1983 2011 StatePlane West Virginia North FIPS 4701 F1US
 Projection: Lambert Conformal Conic
 Datum: NAD 1983 2011
 False Easting: 1,968,500.0000
 False Northing: 0.0000
 Central Meridian: -79.5000
 Standard Parallel 1: 39.0000
 Standard Parallel 2: 40.2500
 Latitude Of Origin: 38.5000
 Units: Foot US

Spring Creek (7)

Map No. 02

1 inch = 400 feet

Date Last Revised: 5/6/2022