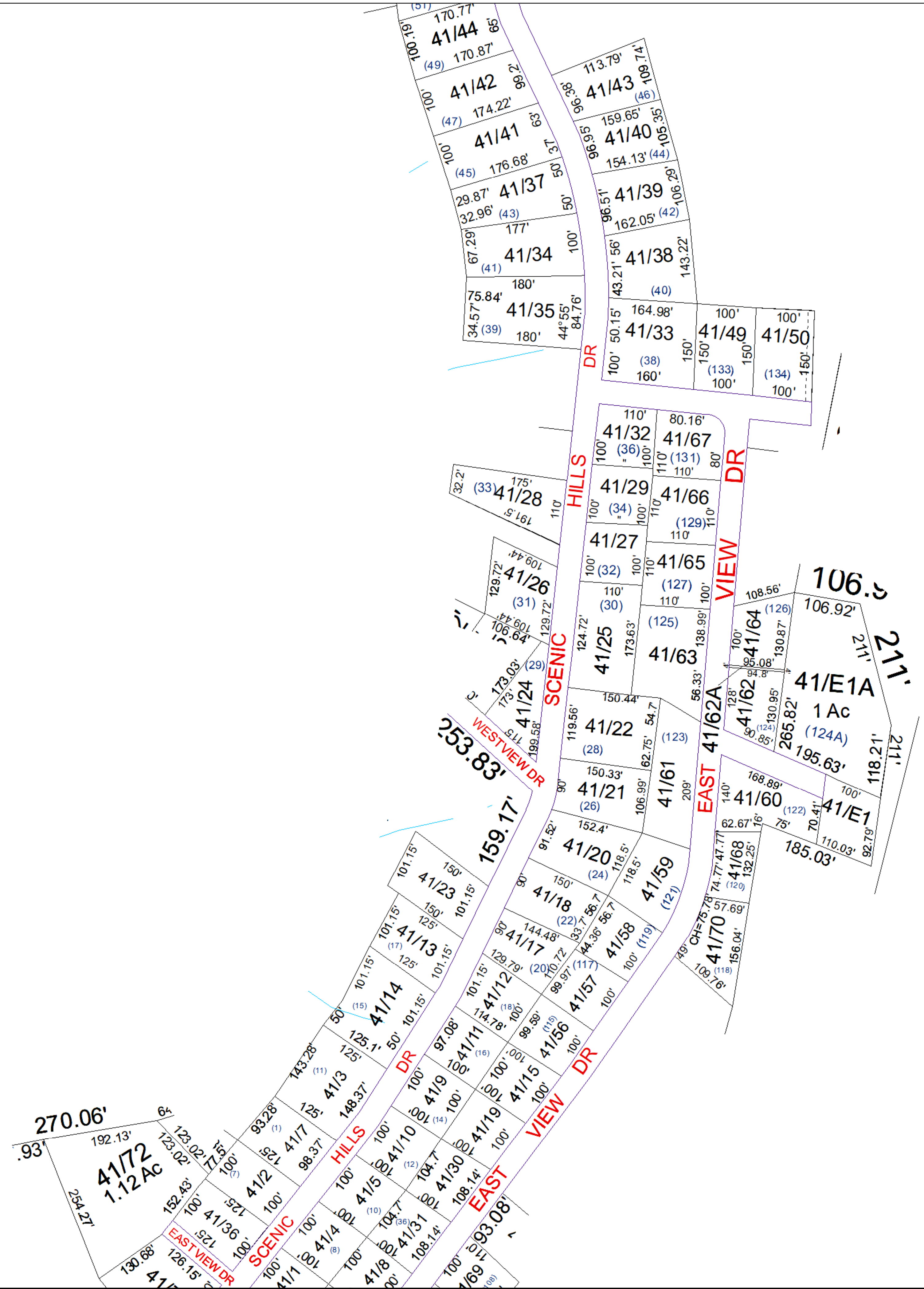
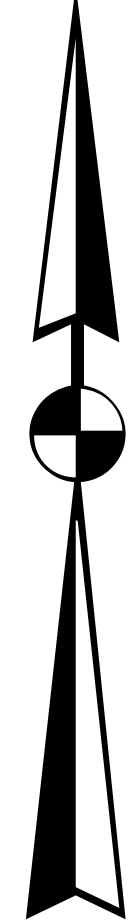


N



For Tax Purposes Only this is not Authoritative Data. This product was developed for taxation purposes and is therefore not suitable for legal, engineering, or surveying purposes. Users of this information should review or consult the primary data and information sources to ascertain the appropriate usage of information. Do not copy

40	40	40
40	41	40
40	40	40

Prepared by: RDS

Legend

--- Previous Deed	Deed lot Number (15)	POST OFFICE
--- Property	District Number 01	CEMET.
--- Railroad Right of Way	Parcel or Index Number 1825	LIBRARY
--- Road and Railroad ROW	HOSPITAL	CHURCH
--- Road Easement	SCHOOL	AIRPORT
--- Road Right of Way	District_Lines	FIRE STATION

Revisions

1	SV Pot 62A created 2/10	7
2		8
3		9
4		10
5		11
6		12
7		13
8		14
9		15
10		16
11		17
12		18

WOOD COUNTY
STATE OF WEST VIRGINIA
Office of Assessor

District	SubDivision
01 - CLAY SCENIC HILLS S/D	
SHEET NO: 41	
Date, Aerial Photography: 2016	Date: 01/14/2022
Scale: 1" = 100'	