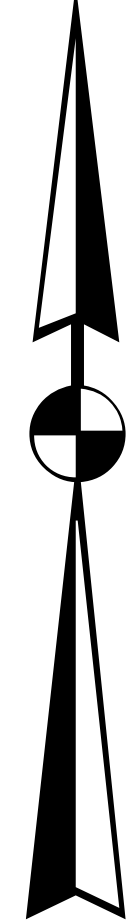
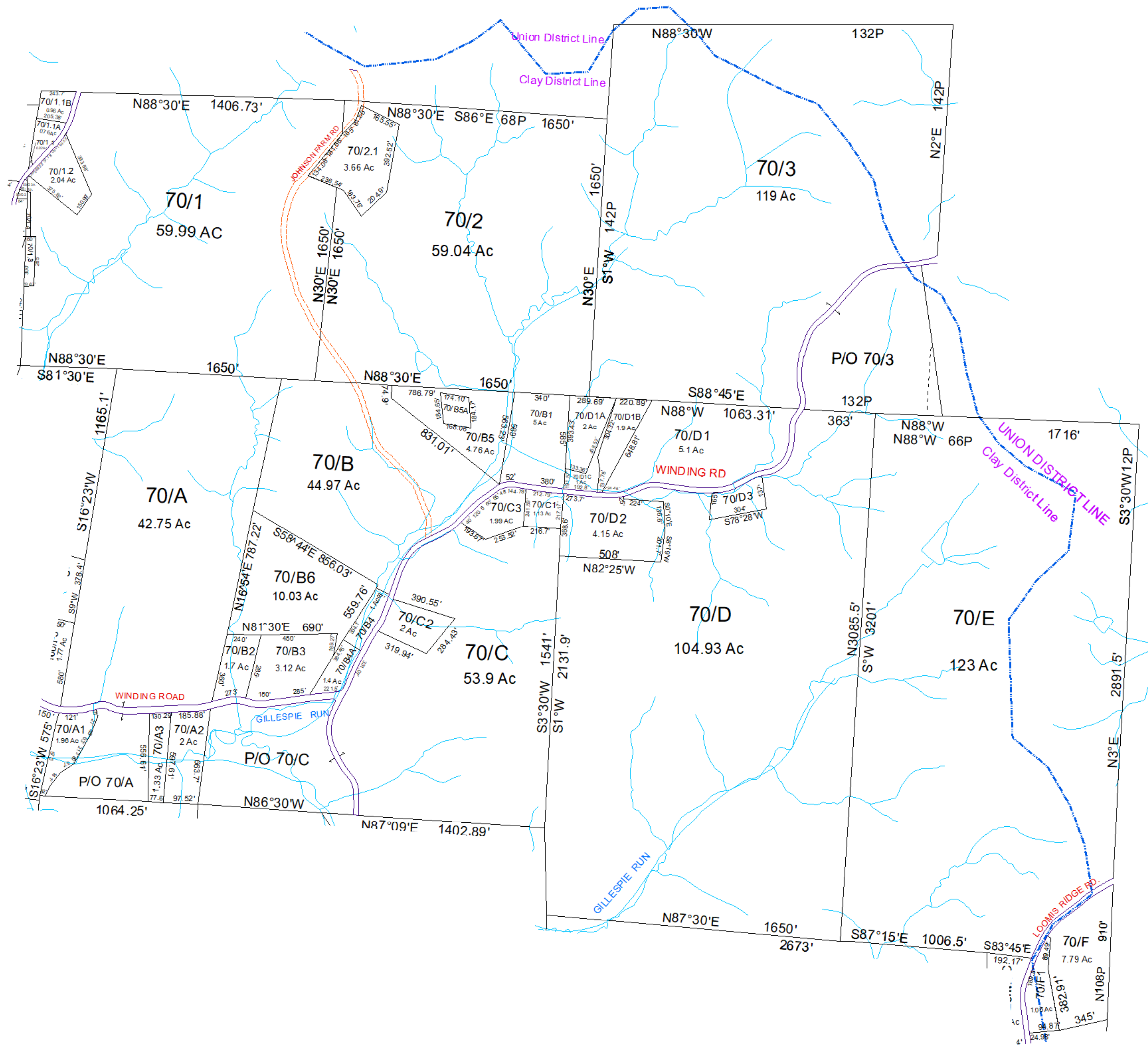


N



Clay- 70



For Tax Purposes Only this is not Authoritative Data. This product was developed for taxation purposes and is therefore not suitable for legal, Engineering, or surveying purposes. Users of this information should review or consult the primary data and information sources to ascertain the appropriate usage of information. Do not copy

540	540	550
50	70	600
100	120	600

Prepared by: RDS

Legend			
	Deed lot Number	(15)	POST OFFICE
	District Number	61	CEMET.
	Parcel or Index Number	1825	LIBRARY
	HOSPITAL		CHURCH
	SCHOOL		AIRPORT
	District_Lines		FIRE STATION

Revisions			
1	SV B5A created 2/09	7	13
2		8	14
3		9	15
4		10	16
5		11	17
6		12	18

WOOD COUNTY
STATE OF WEST VIRGINIA
Office of Assessor

District	SubDivision
01 - CLAY	
SHEET NO: 70	
Date, Aerial Photography: 2016	Date: 01/14/2022
Scale: 1" = 400'	