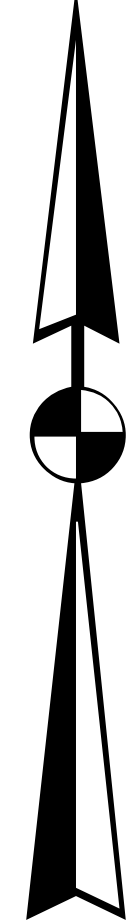
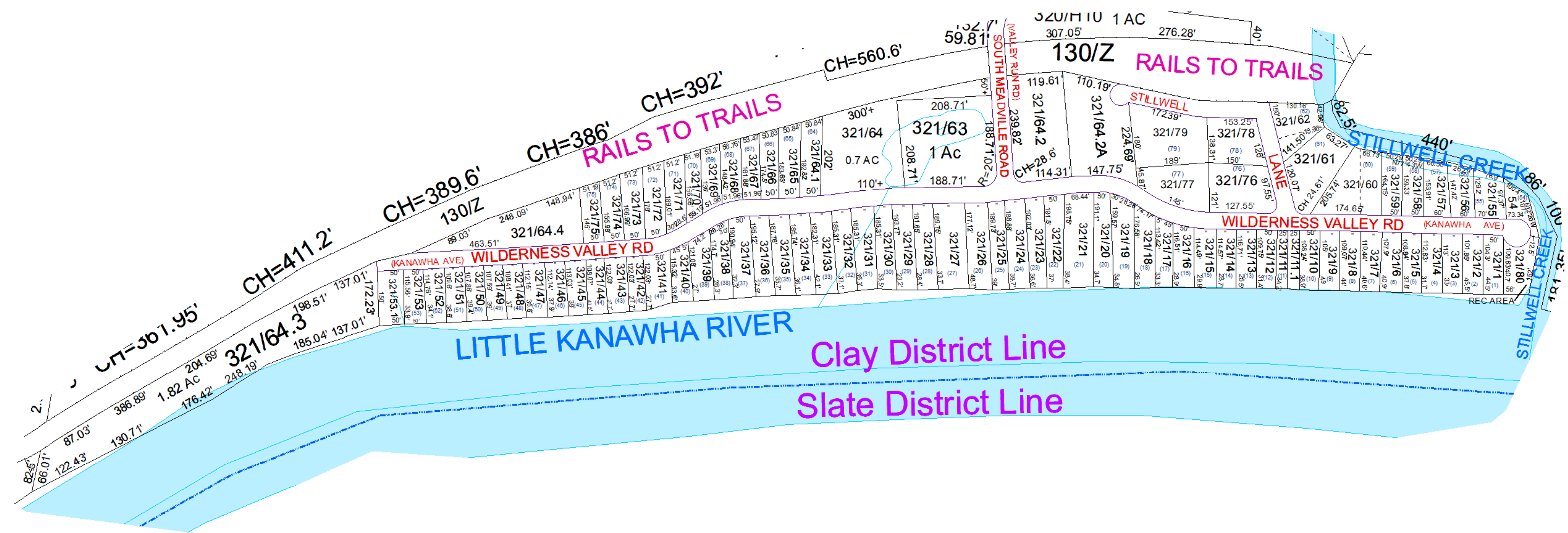


N



Clay- 321



For Tax Purposes Only this is not Authoritative Data. This product was developed for taxation purposes and is therefore not suitable for legal, Engineering, or surveying purposes. Users of this information should review or consult the primary data and information sources to ascertain the appropriate usage of information. Do not copy

320	320	320
320	321	340
30	30	30

Prepared by: RDS

Legend			
	Deed lot Number	(15)	POST OFFICE
	District Number	01	CEMET.
	Parcel or Index Number	1925	LIBRARY
	HOSPITAL		CHURCH
	SCHOOL		AIRPORT
	District_Lines		FIRE STATION

Revisions			
1	SV 80 created 06/13	7	13
2		8	14
3		9	15
4		10	16
5		11	17
6		12	18

**WOOD COUNTY**  
STATE OF WEST VIRGINIA  
Office of Assessor

District	SubDivision
01 - CLAY WILDERNESS VALLEY	
SHEET NO: 321	
Date, Aerial Photography: 2016	Date: 01/14/2022
Scale: 1" = 200'	