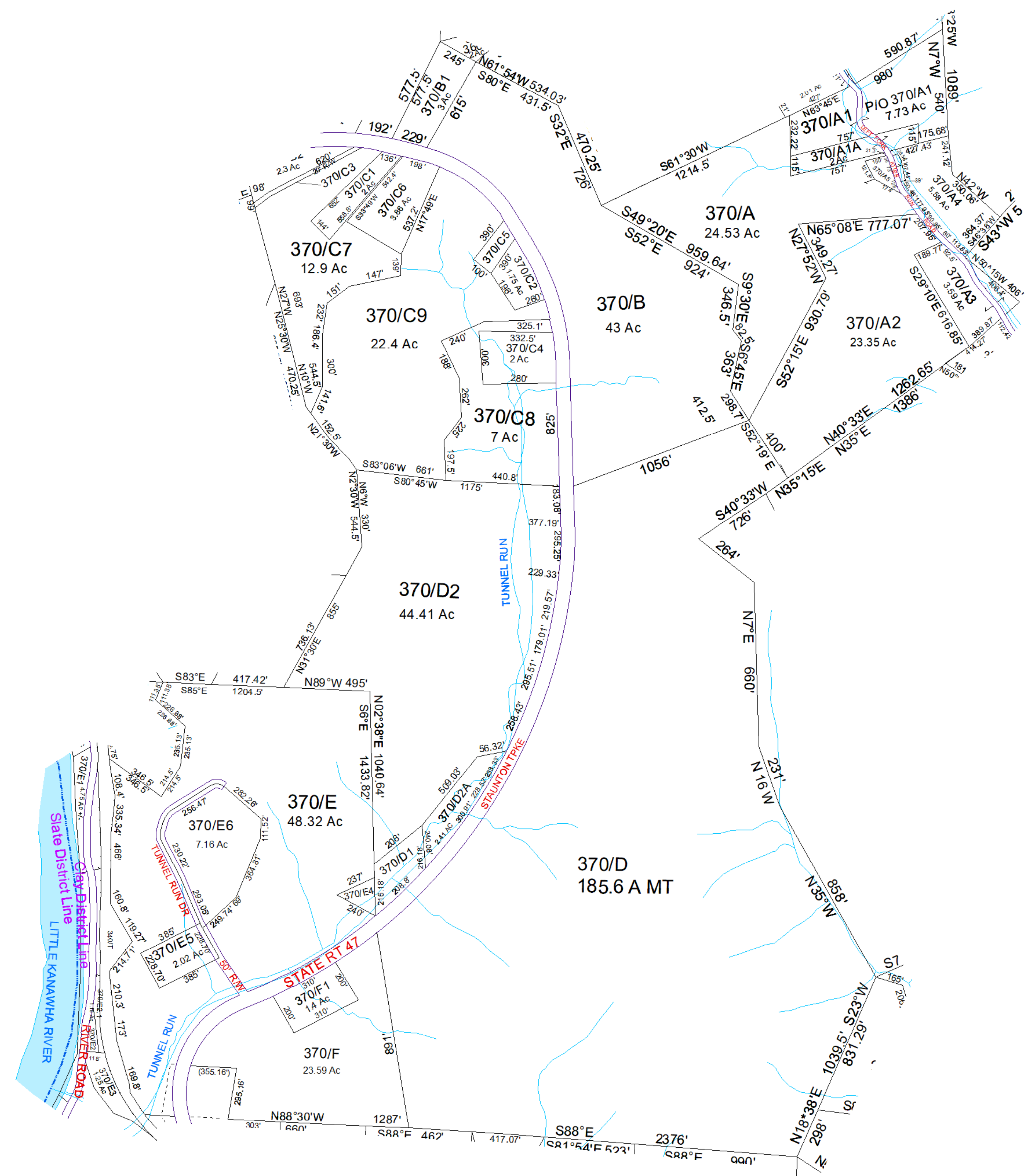
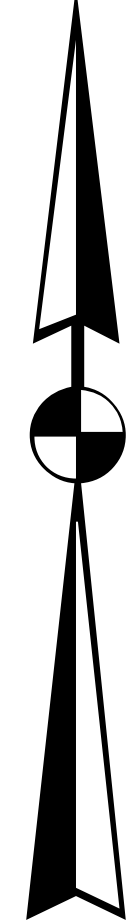


N



For Tax Purposes Only this is not Authoritative Data. This product was developed for taxation purposes and is therefore not suitable for legal, Engineering, or surveying purposes. Users of this information should review or consult the primary data and information sources to ascertain the appropriate usage of information. Do not copy

360	380	380
360	370	400
350	350	400

Prepared by: RDS

Legend		
	Deed lot Number (15)	POST OFFICE
	District Number 61	CEMET.
	Parcel or Index Number 1525	LIBRARY
	HOSPITAL	CHURCH
	SCHOOL	AIRPORT
	District_Lines	FIRE STATION

Revisions		
1	SV E5 & E6 created 12/08	7
2	RS G added to 400/B 11/13	8
3	SV A4 created 9/16	9
4	Pcl A5 created, PD 4/19/2019	10
5		11
6		12

WOOD COUNTY
STATE OF WEST VIRGINIA
Office of Assessor

District	SubDivision
01 - CLAY	
SHEET NO: 370	
Date, Aerial Photography: 2016	Date: 01/14/2022
Scale: 1" = 300'	