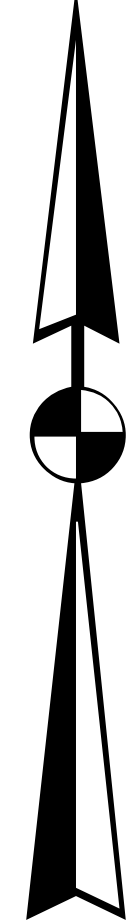
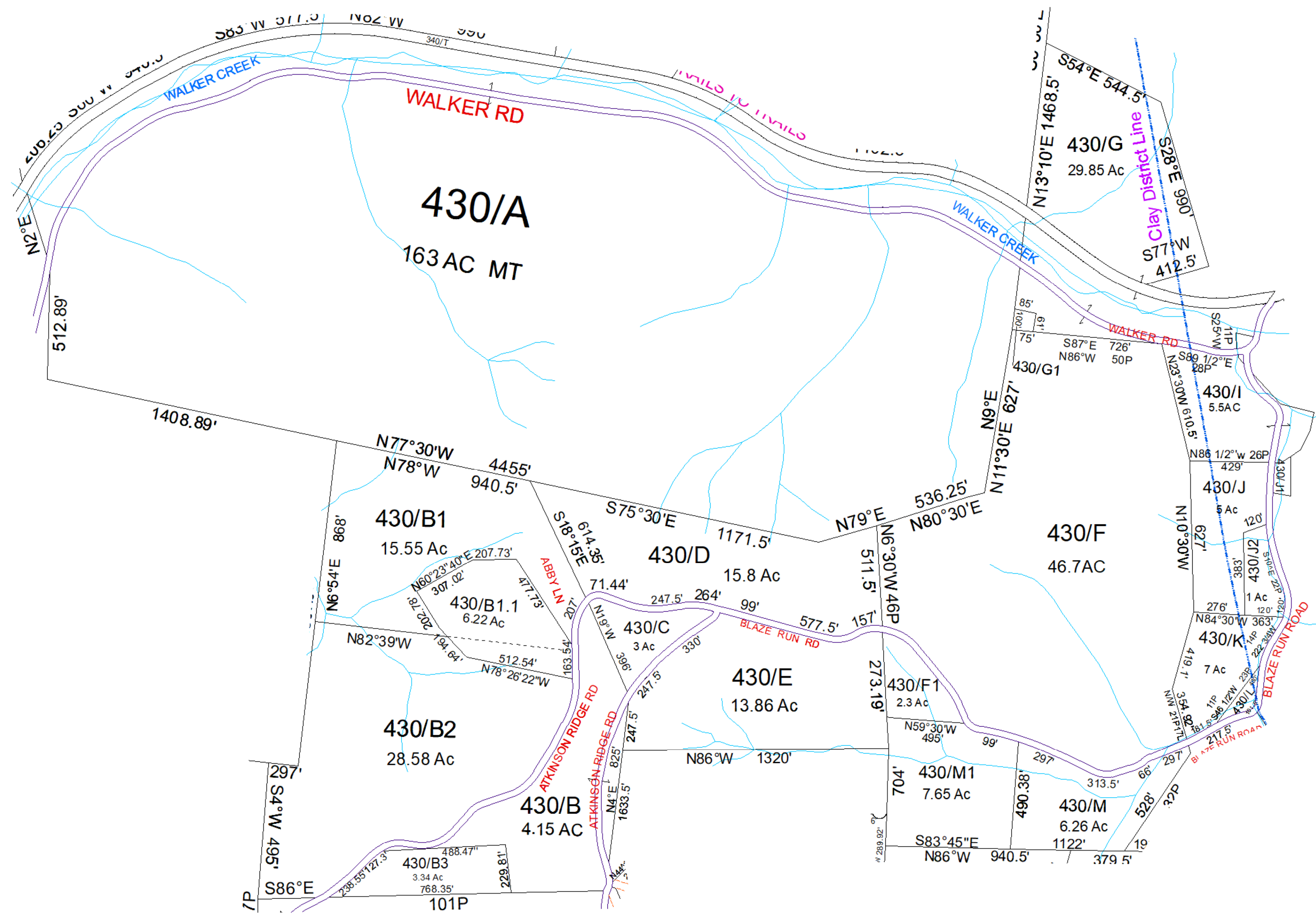


N



Clay- 430



For Tax Purposes Only this is not Authoritative Data. This product was developed for taxation purposes and is therefore not suitable for legal, Engineering, or surveying purposes. Users of this information should review or consult the primary data and information sources to ascertain the appropriate usage of information. Do not copy

410	420	630
410	430	630
480	490	670

Prepared by: RDS

Legend		
	Deed lot Number (15)	POST OFFICE
	District Number 61	CEMET.
	Parcel or Index Number 1825	LIBRARY
	HOSPITAL	CHURCH
	SCHOOL	AIRPORT
	District Lines	FIRE STATION

Revisions			
1	7	13	
2	8	14	
3	9	15	
4	10	16	
5	11	17	
6	12	18	

WOOD COUNTY
STATE OF WEST VIRGINIA
Office of Assessor

District	SubDivision
01 - CLAY	
SHEET NO: 430	
Date, Aerial Photography: 2016	Date: 01/14/2022
Scale: 1" = 300'	