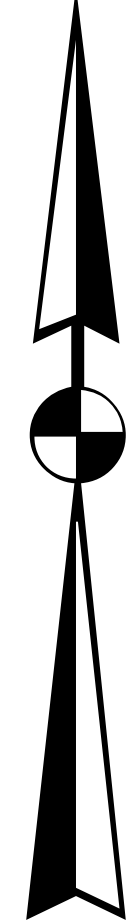
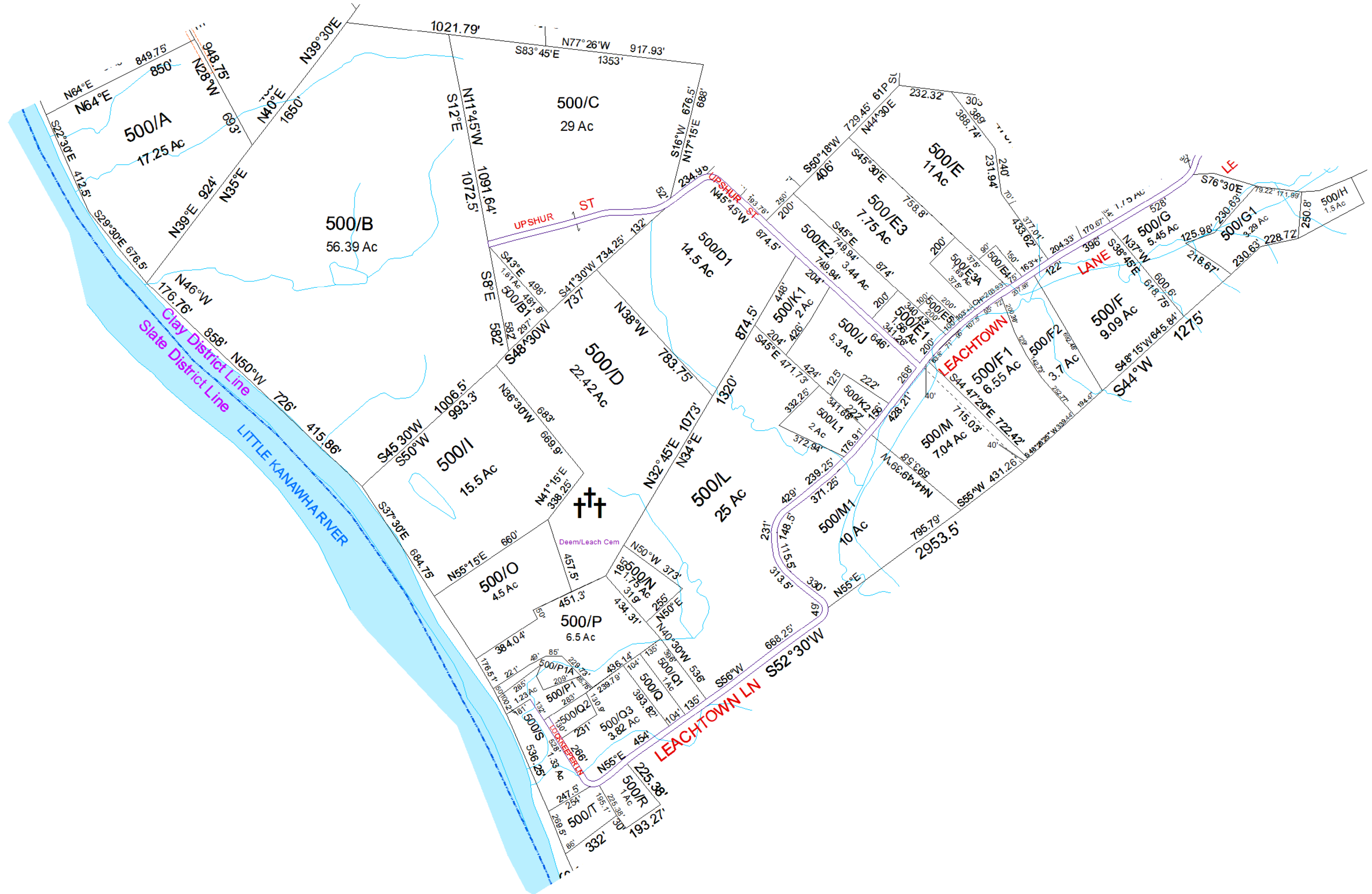


N



# Clay- 500



For Tax Purposes Only this is not Authoritative Data. This product was developed for taxation purposes and is therefore not suitable for legal, Engineering, or surveying purposes. Users of this information should review or consult the primary data and information sources to ascertain the appropriate usage of information. Do not copy

460	470	470
220	500	510
300	300	510

Prepared by: RDS

Legend		
	Deed lot Number (15)	POST OFFICE
	District Number 01	CEMET.
	Parcel or Index Number 1025	LIBRARY
	HOSPITAL	CHURCH
	SCHOOL	AIRPORT
	District_Lines	FIRE STATION

Revisions			
1	SV L1 created 4/16/13	7	Pcl F2 created, PD 11/21/2019
2	SV F1 created 3/24/14	8	
3	SV F1 added to M 3/14	9	
4	SV Pt E1 added to E2 6/15	10	
5	SV E3A revised from plat 6/15	11	
6	Pcl F1 created, PD 12/4/2018	12	
		13	
		14	
		15	
		16	
		17	
		18	

**WOOD COUNTY**  
STATE OF WEST VIRGINIA  
Office of Assessor

District	SubDivision
01 - CLAY	
<b>SHEET NO: 500</b>	
Date, Aerial Photography: 2016	Date: 01/14/2022
	Scale: 1" = 300'