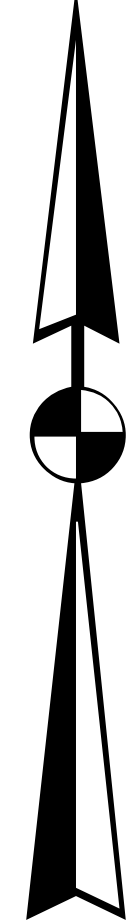
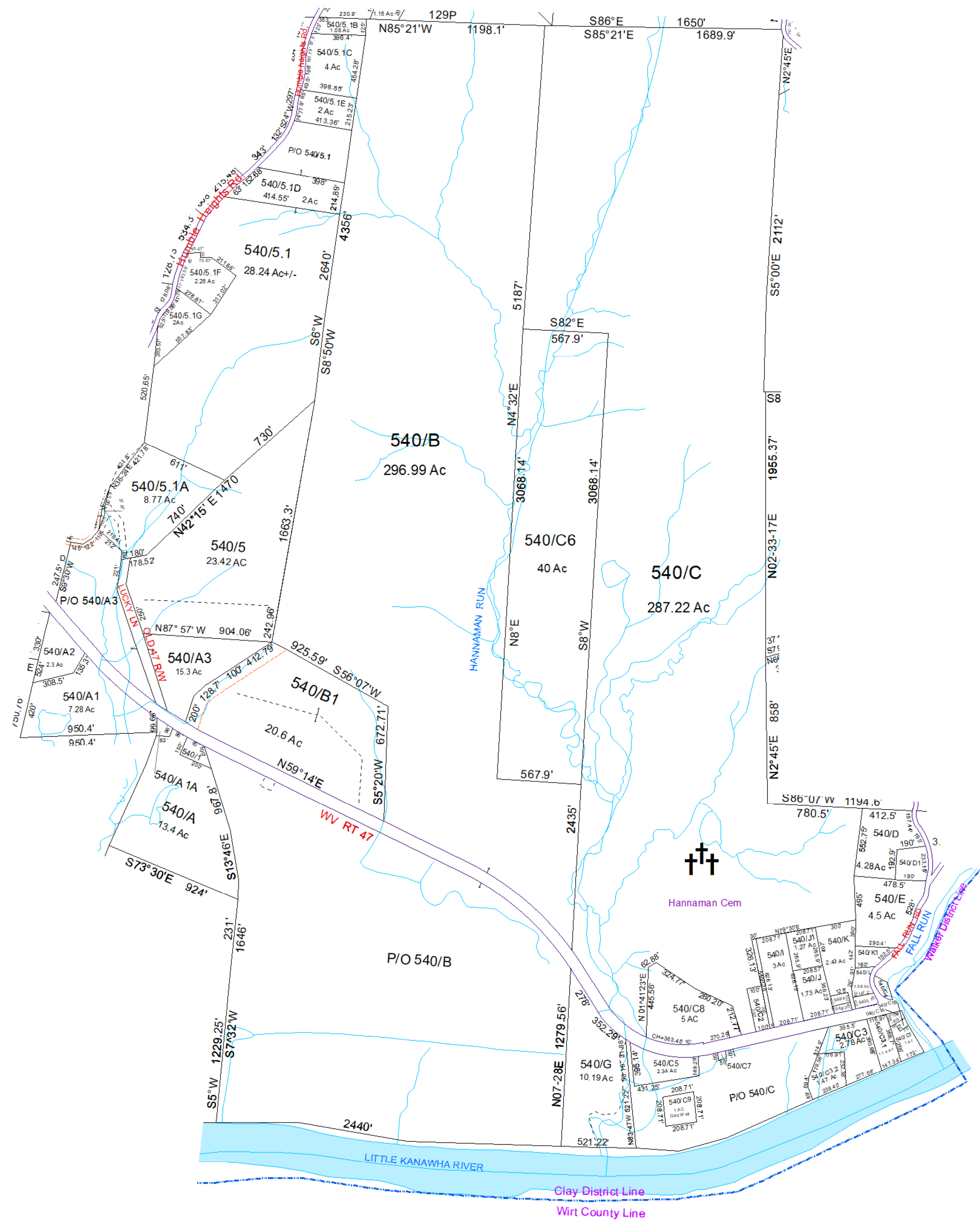


N



Clay- 540



For Tax Purposes Only this is not Authoritative Data. This product was developed for taxation purposes and is therefore not suitable for legal, Engineering, or surveying purposes. Users of this information should review or consult the primary data and information sources to ascertain the appropriate usage of information. Do not copy

480	480	490
510	540	530
540	Wirt	700

Prepared by: RDS

Legend			
	Deed lot Number (15)	POST OFFICE	
	District Number 01	CEMET.	
	Parcel or Index Number 1925	LIBRARY	
	HOSPITAL	CHURCH	
	SCHOOL	AIRPORT	
	District Lines	FIRE STATION	

Revisions			
1	SV 470/QCD added to 540/5.1A 1/10	7	Delete 5.2 add to 5 RS 4/17
2	SV 5.1A1 created 4/10	8	
3	SV 5.1G created 10/10	9	
4	SV H added to G 11/10	10	
5	SV C3&C1B created 6/12	11	
6	SV Pcl 2 added back to B 9/14	12	
		13	
		14	
		15	
		16	
		17	
		18	

WOOD COUNTY
STATE OF WEST VIRGINIA
Office of Assessor

District	SubDivision
01 - CLAY	
SHEET NO: 540	
Date, Aerial Photography: 2016	Date: 01/14/2022
Scale: 1" = 400'	