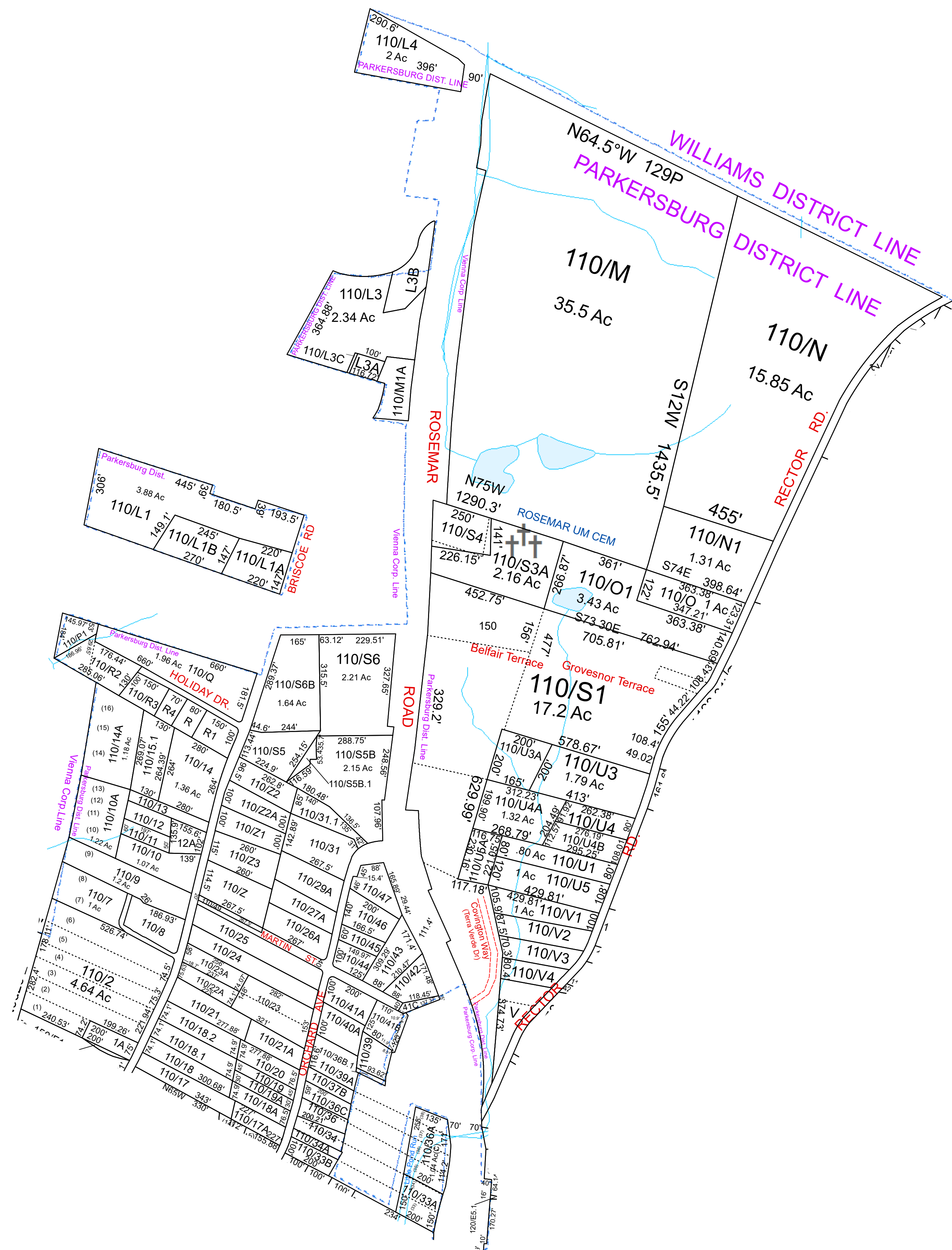


PARKERSBURG 110



For Tax Purposes Only this is not Authoritative Data. This product was developed for taxation purposes and is therefore not suitable for legal, Engineering, or surveying purposes. Users of this information should review or consult the primary data and information sources to ascertain the appropriate usage of information. Do not copy.

40	41	120
40	110	120
150	150	120

Mapper: KPD

Legend	
	Previous Deed
	Property
	Railroad Right of Way
	Road and Railroad RW
	Road Easement
	Road Right of Way
	Deed lot Number (15)
	MAP / Parcel Number 1925
	District Number 04
	HOSPITAL
	POST OFFICE
	SCHOOL
	District Lines
	CEMET.
	LIBRARY
	AIRPORT
	CHURCH
	FIRE STATION

Revisions		
1	Delete T.S2,S3,U2&U8=S1 SV 2/10	13
2	Pcls USA,8U4A created SV 11/10	14
3	Pcl U3A created SV 3/11	15
4	Pcl S5B.1 created SV 3/12	16
5	Pcl 37A added to 36A RS 1/13	17
6	Pcl U4B created SV 6/24/15	18
7	New 49 is 1/2 of ST RS 1/16	
8	Pcl 22A & 23A created, PD 1/18	
9	Pcls 1-6 merged into pcl 2, PD 12/4/2018	
10	Pcl S3A revised per plat, PD 1/28/19	
11	<Null>Pcls 1, 3-6, merged into pcl 2, PD 12/4/18	
12		

WOOD COUNTY
STATE OF WEST VIRGINIA
Office of Assessor

District	Subdivision
PARKERSBURG DISTRICT 04	
SHEET NO: 110	
Date, Aerial Photography: 2016	Date: 01/14/2022
	Scale: 1" = 300'