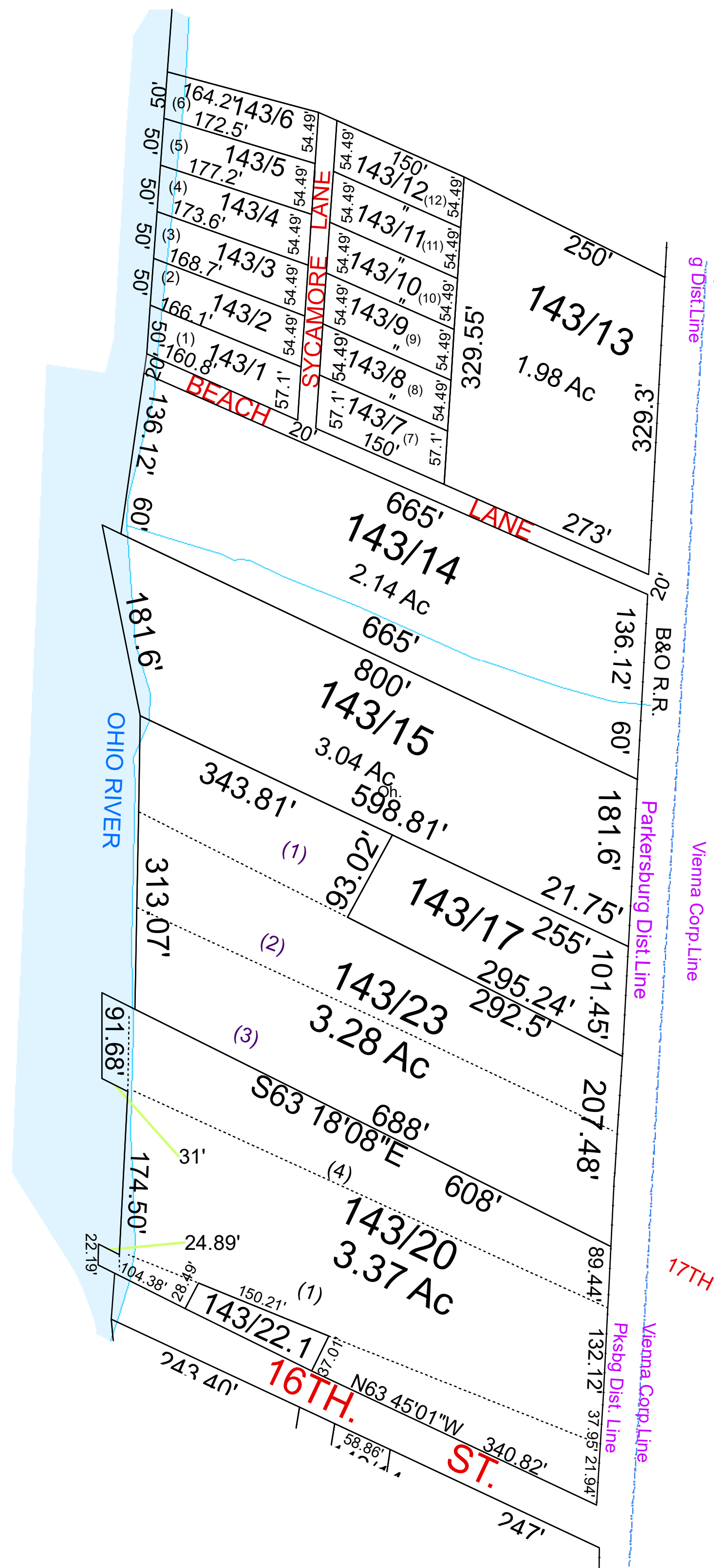


# PARKERSBURG 143



For Tax Purposes Only this is not Authoritative Data  
 This product was developed for taxation purposes and is therefore not suitable for legal, Engineering, or surveying purposes. Users of this information should review or consult the primary data and information sources to ascertain the appropriate usage of information. Do not copy

Oh.	144	5
OH	143	8
Oh.	142	8

Mapper: KPD

Legend	
	Deed lot Number (15)
	MAP / Parcel Number 1925
	District Number 04
	HOSPITAL
	POST OFFICE
	SCHOOL
	District Lines
	CENT.
	LIBRARY
	AIRPORT
	CHURCH
	FIRE STATION

Revisions	
1	Pcls 21&22 added to 20 SV 10/16
2	Pcl 23 annexed from Vienna, PD 9/27/2019
3	
4	
5	
6	
7	
8	
9	
10	
11	
12	
13	
14	
15	
16	
17	
18	

**WOOD COUNTY**  
 STATE OF WEST VIRGINIA  
 Office of Assessor

District	Subdivision
<b>PARKERSBURG DISTRICT 04</b>	
SHEET NO: 143	
Date, Aerial Photography: 2016	Date: 01/14/2022
	Scale: 1" = 100'