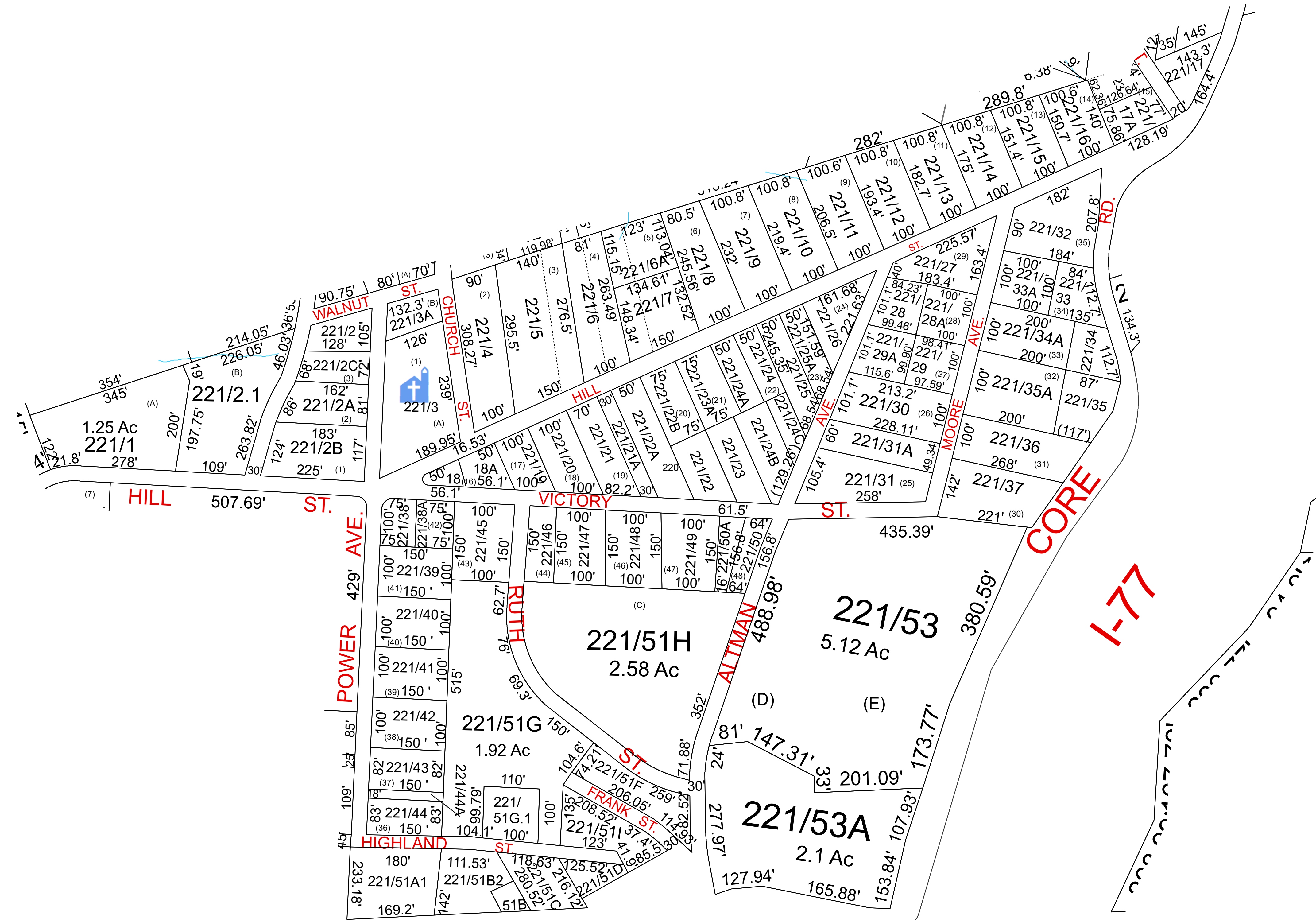


PARKERSBURG 221



For Tax Purposes Only this is not Authoritative Data
 This product was developed for taxation purposes and is therefore not suitable for legal, Engineering, or surveying purposes. Users of this information should review or consult the primary data and information sources to ascertain the appropriate usage of information. Do not copy

220	220	220
220	221	220
220	230	220

Mapper: KPD

Legend	
	Previous Deed
	Property
	Railroad Right of Way
	Road and Railroad RW
	Road Easement
	Road Right of Way
	Deed lot Number (15)
	MAP / Parcel Number 1925
	District Number 04
	HOSPITAL
	POST OFFICE
	SCHOOL
	CHURCH
	FIRE STATION
	District Lines
	CENT.
	LIBRARY
	AIRPORT
	CHURCH
	FIRE STATION

Revisions	
1	PcIs 25 25A, 826 revised by plat SV 9/14
2	PcIs 6A&7 revised from plat SV 3/15
3	
4	
5	
6	
7	
8	
9	
10	
11	
12	
13	
14	
15	
16	
17	
18	

WOOD COUNTY
 STATE OF WEST VIRGINIA
 Office of Assessor

District	Subdivision
PARKERSBURG DISTRICT 04	
SHEET NO: 221	
Date, Aerial Photography: 2016	Date: 01/14/2022
	Scale: 1" = 100'