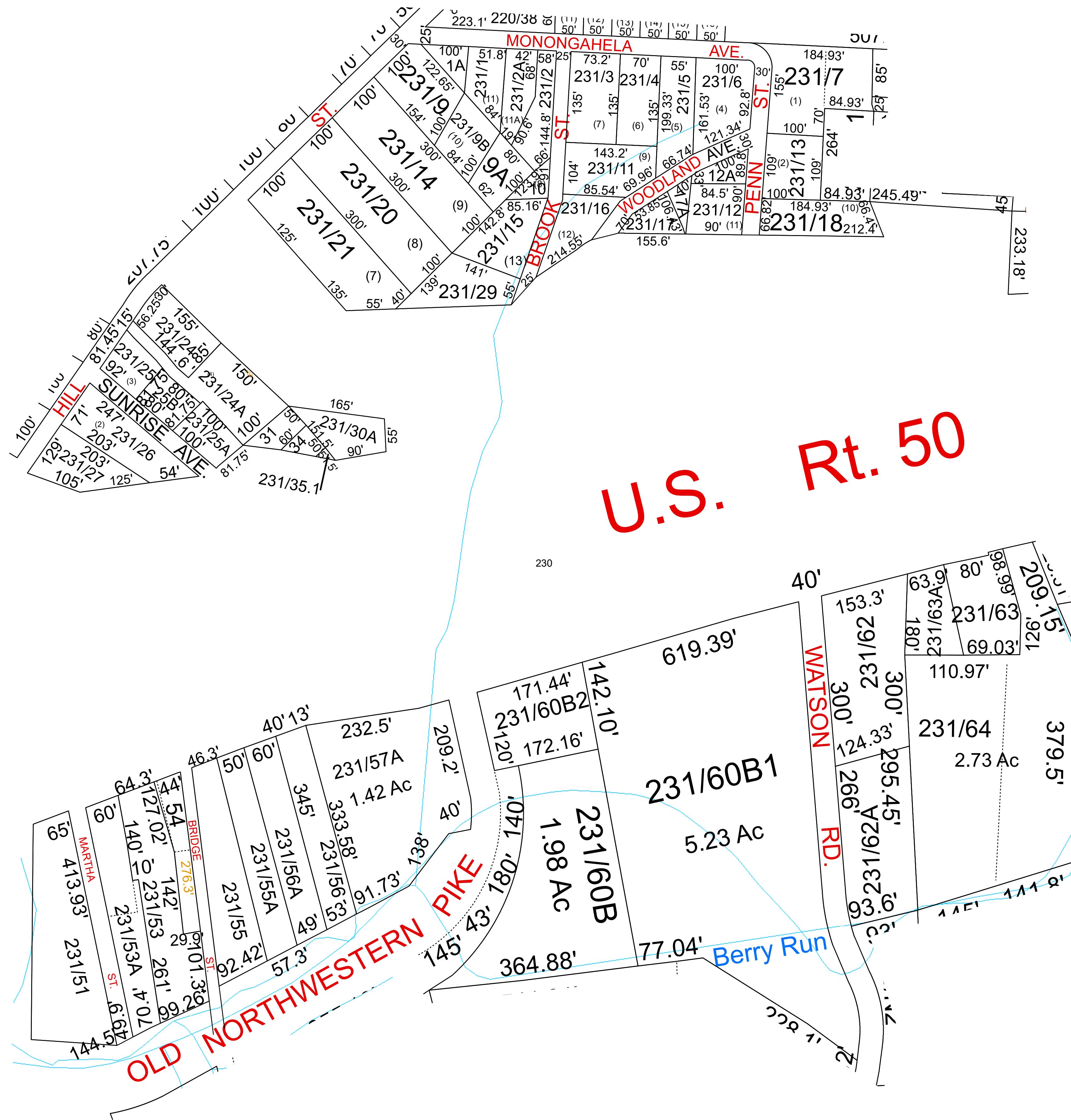


PARKERSBURG 231



For Tax Purposes Only this is not Authoritative Data
 This product was developed for taxation purposes and is therefore not suitable for legal, Engineering, or surveying purposes. Users of this information should review or consult the primary data and information sources to ascertain the appropriate usage of information. Do not copy

230	220	221
230	231	221
230	230	230

Mapper: KPD

Legend	
	Previous Deed
	Property
	Railroad Right of Way
	Road and Railroad RW
	Road Easement
	Road Right of Way
	Deed lot Number (15)
	MAP / Parcel Number 1925
	District Number 04
	HOSPITAL
	POST OFFICE
	SCHOOL
	District Lines
	CEMENT
	LIBRARY
	AIRPORT
	CHURCH
	FIRE STATION

Revisions			
1	Pcl S3.2 created SV 3/11	7	13
2	Pcls 53 1&53.2 added to 54 SV 7/11	8	14
3	Pt of 60B taken for Rt 50 RS 7/13	9	15
4		10	16
5		11	17
6		12	18

WOOD COUNTY
 STATE OF WEST VIRGINIA
 Office of Assessor

District	Subdivision
PARKERSBURG DISTRICT 04	
SHEET NO: 231	
Date, Aerial Photography: 2016	Date: 01/14/2022
	Scale: 1" = 100'