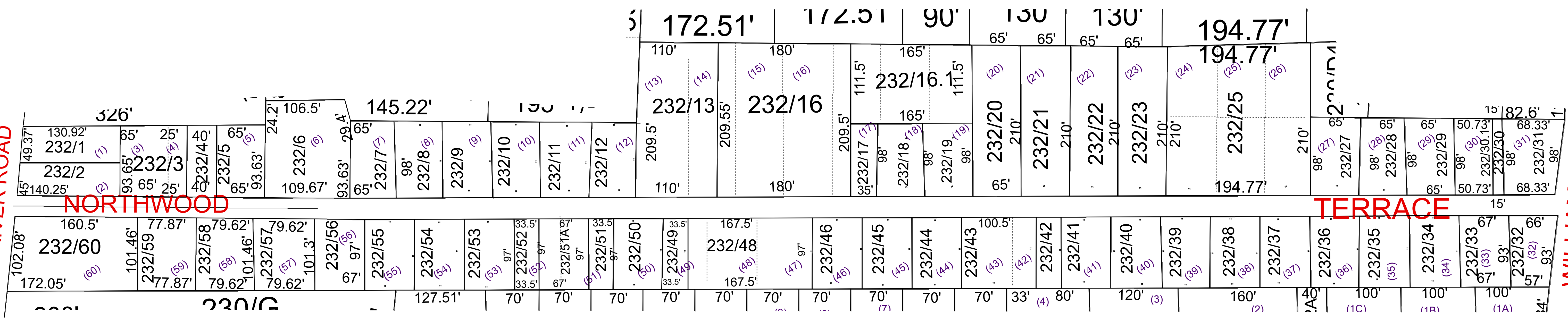


111  
OLD RIVER ROAD



WILLIAMS HIGHWAY  
112.13'

For Tax Purposes Only this is not Authoritative Data. This product was developed for taxation purposes and is therefore not suitable for legal, engineering, or surveying purposes. Users of this information should review or consult the primary data and information sources to ascertain the appropriate usage of information. Do not copy.

230	230	230
230	232	230
230	234	230

Legend	
	Previous Deed
	Property
	Railroad Right of Way
	Road and Railroad RW
	Road Easement
	Road Right of Way
	Deed lot Number (15) MAP / Parcel Number 19/25 District Number 12
	HOSPITAL
	POST OFFICE
	SCHOOL
	District Lines
	CENT.
	LIBRARY
	AIRPORT
	CHURCH

Revisions	
1	Pcl 24 & 26 no in Pcl 25, 10/11 SV
2	Pcl 52A & 51A created, 3/12 SV
3	Pcl 52A no in Pcl 51A, 5/13 SV
4	Pcl 48A created, 10/12 SV
5	Pcl 47 and 49A now in Pcl 48, 10/12 SV
7	
8	
9	
10	
11	
12	
13	
14	
15	
16	
17	
18	

**WOOD COUNTY**  
STATE OF WEST VIRGINIA  
Office of Assessor

District	SUBDIVISION
12 - WILLIAMS	Northwood Ter Adn.
SHEET NO: 232	
Date, Aerial Photography: 2016	Date: 01/14/2022
Scale: 1" = 100'	