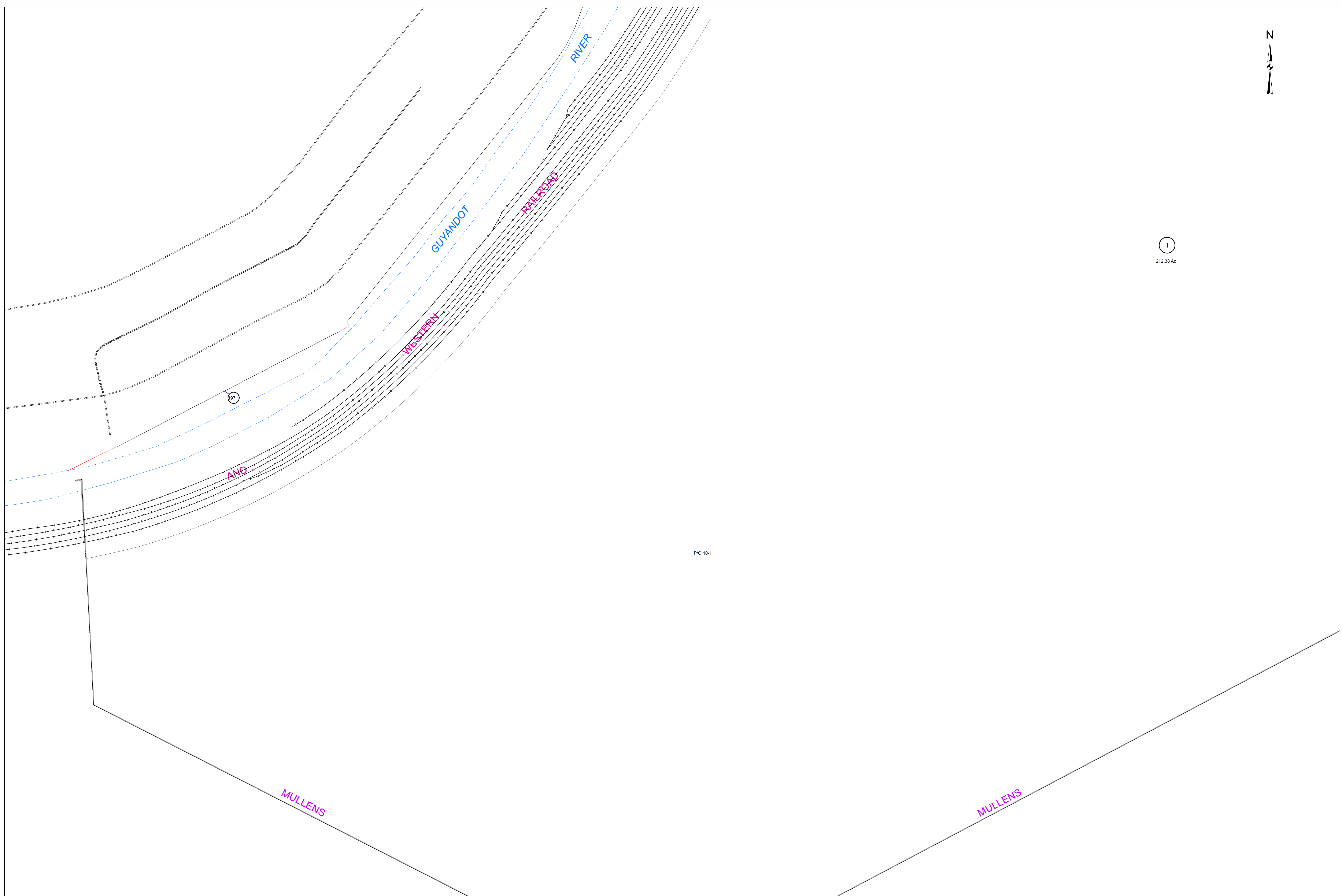




1
212.38 Ac



P/O 10-1

Prepared by
Kimball
Kimball Associates
Architects and Engineers

For Tax Purposes Only

The tax map was compiled for purposes of taxation from available record evidence and has not been field verified. This map is not a valid survey plat and the data on this map does not imply any official status to such data. The State of West Virginia and county assessor's office assume no liability that might result from the use of this map.

Legend	
Boundary	Deed lot Number (15)
BOUNDARYTYPE	Parcel or Index Number (5)
Water	District Number (9)
- - - Previous Deed	
Property	
— Rained Right of Way	
- - - Road Easement	
— Road Right of Way	

Revisions			
1	7	13	
2	8	14	
3	9	15	
4	10	16	
5	11	17	
6	12	18	

010	011
006 12	10 41

WYOMING COUNTY
STATE OF WEST VIRGINIA
Office of Assessor

District
MULLENS
SHEET NO: 12
Date, Aerial Photography: November, 1962 Date Map: Sept, 16, 2021
Photo No: _____ Scale: 1" = 400'