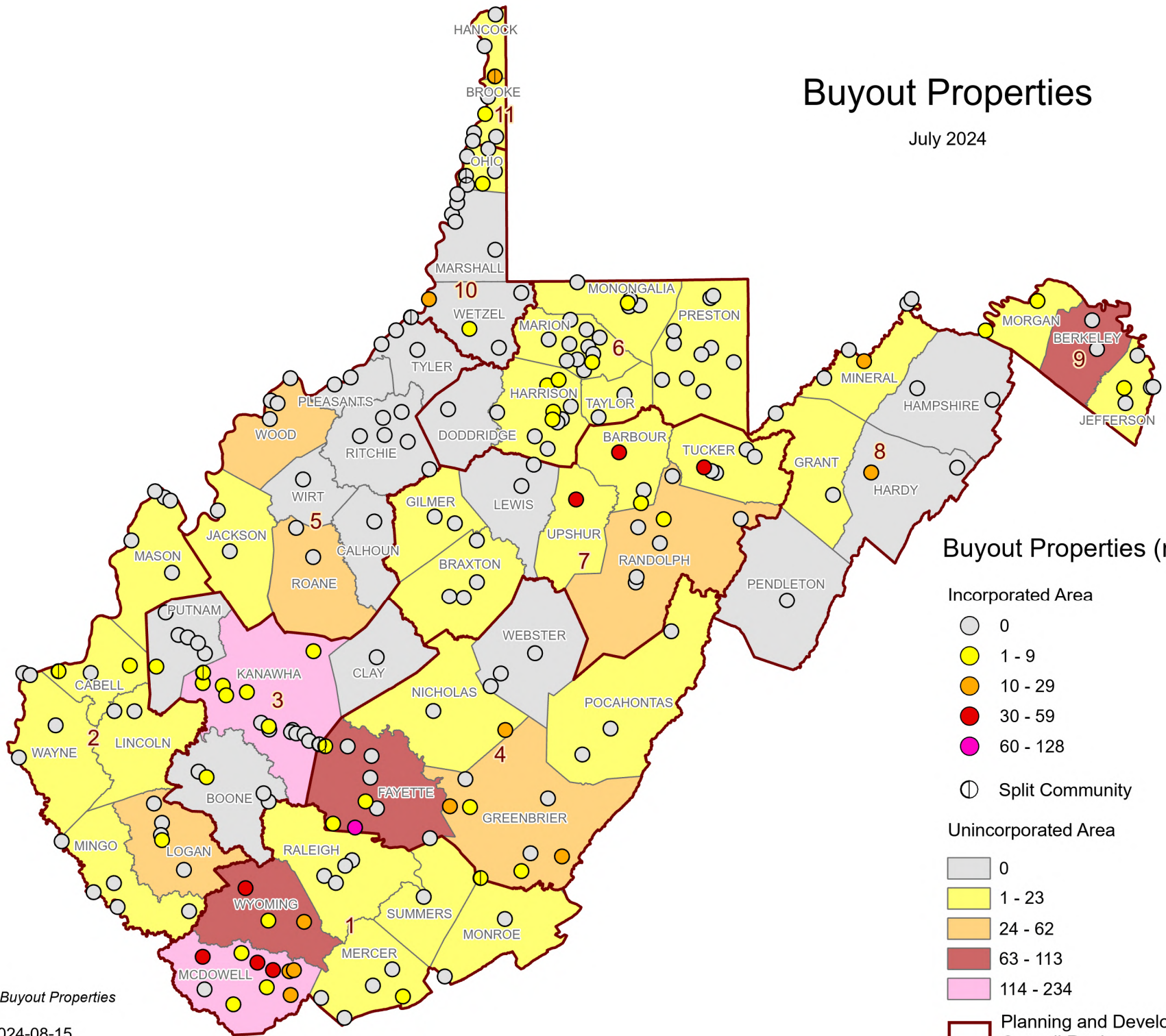


Buyout Properties

July 2024



Buyout Properties (n = 1,961)

Incorporated Area

- 0
- 1 - 9
- 10 - 29
- 30 - 59
- 60 - 128

⊕ Split Community

Unincorporated Area

- 0
- 1 - 23
- 24 - 62
- 63 - 113
- 114 - 234

▭ Planning and Development Council Region

*12 Landslide Buyout Properties

WVGISTC 2024-08-15