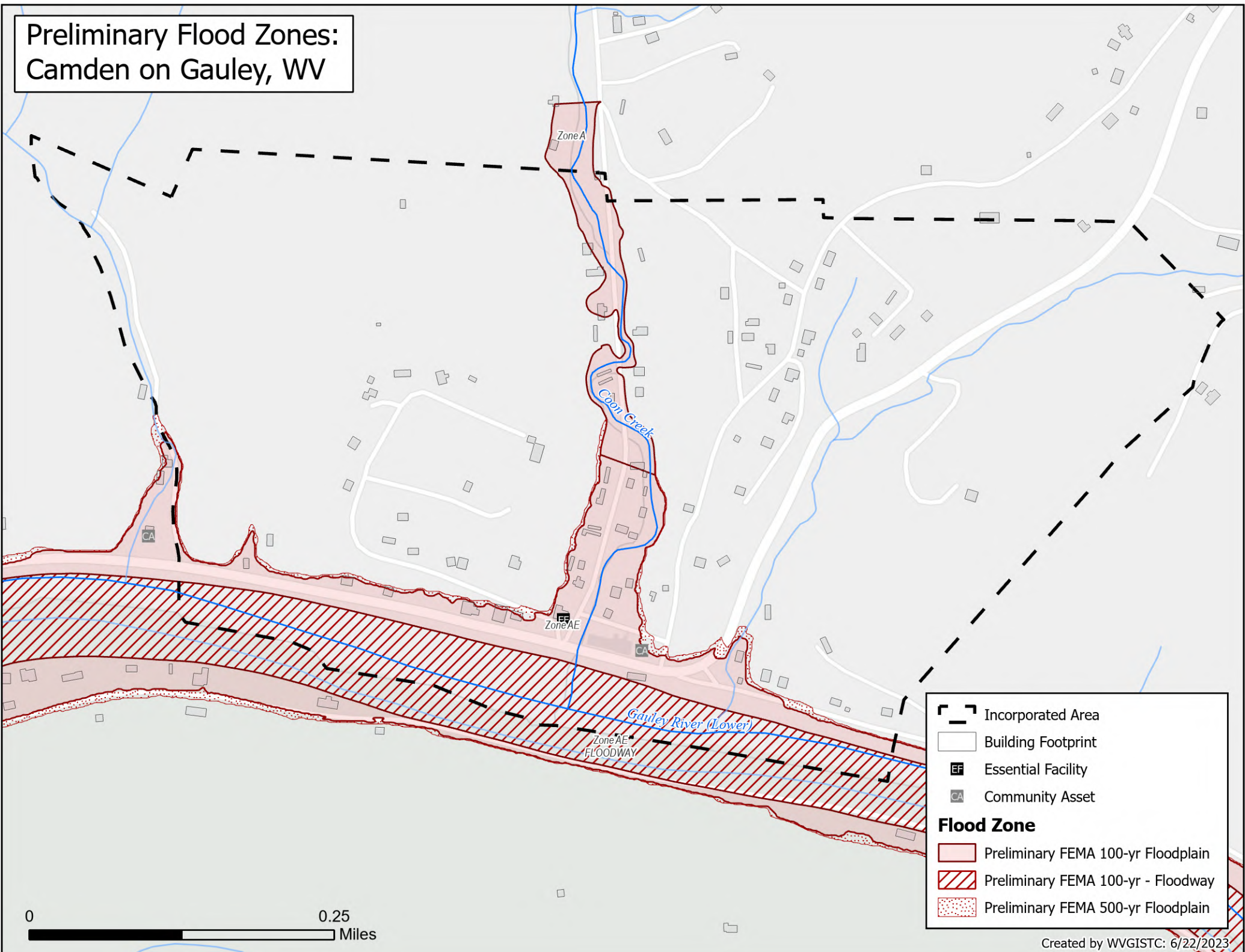


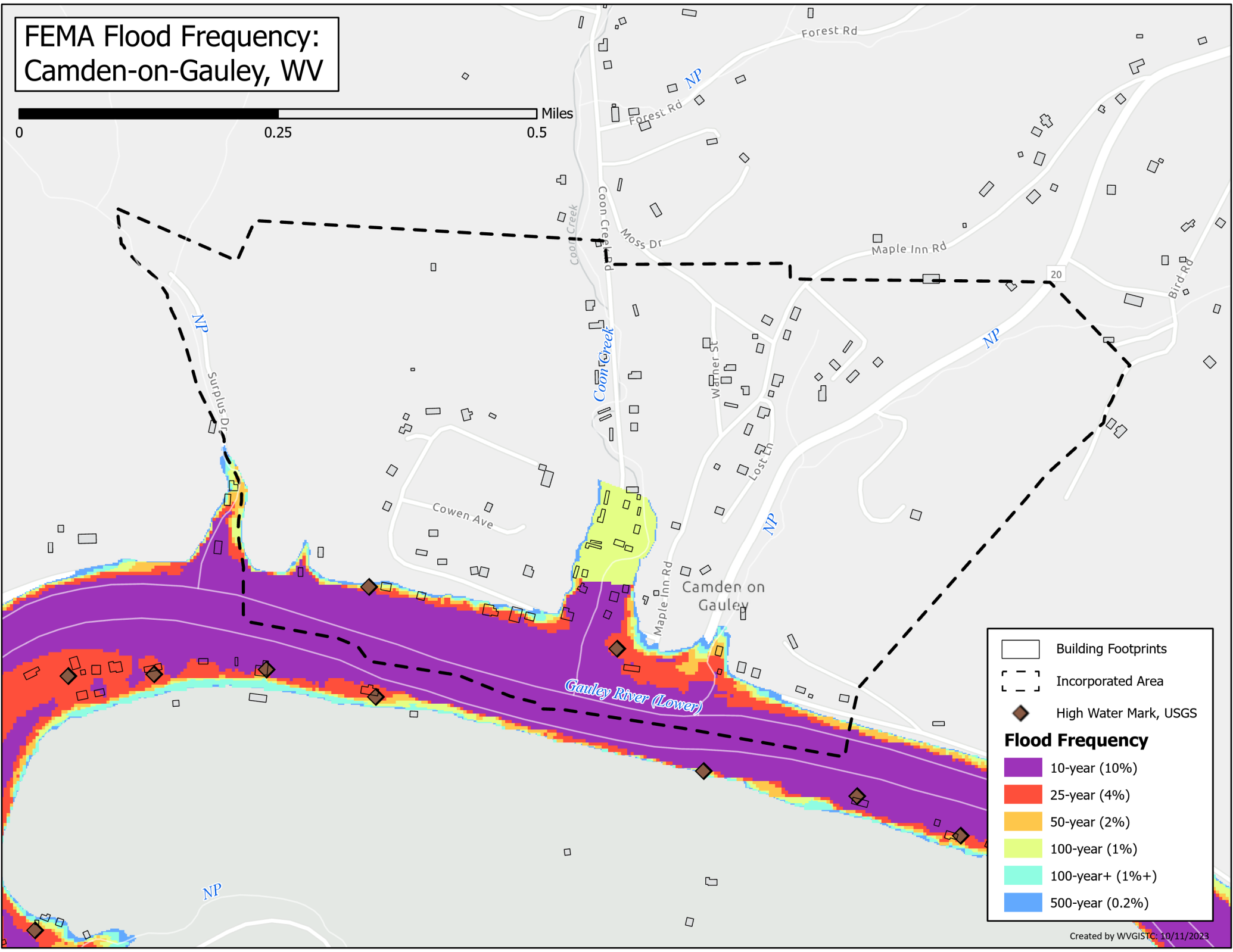
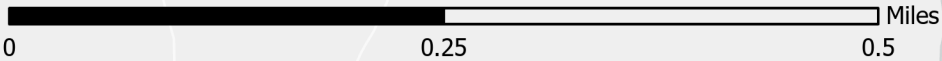
Preliminary Flood Zones: Camden on Gauley, WV



	Incorporated Area
	Building Footprint
	Essential Facility
	Community Asset
Flood Zone	
	Preliminary FEMA 100-yr Floodplain
	Preliminary FEMA 100-yr - Floodway
	Preliminary FEMA 500-yr Floodplain

0 0.25 Miles

FEMA Flood Frequency: Camden-on-Gauley, WV

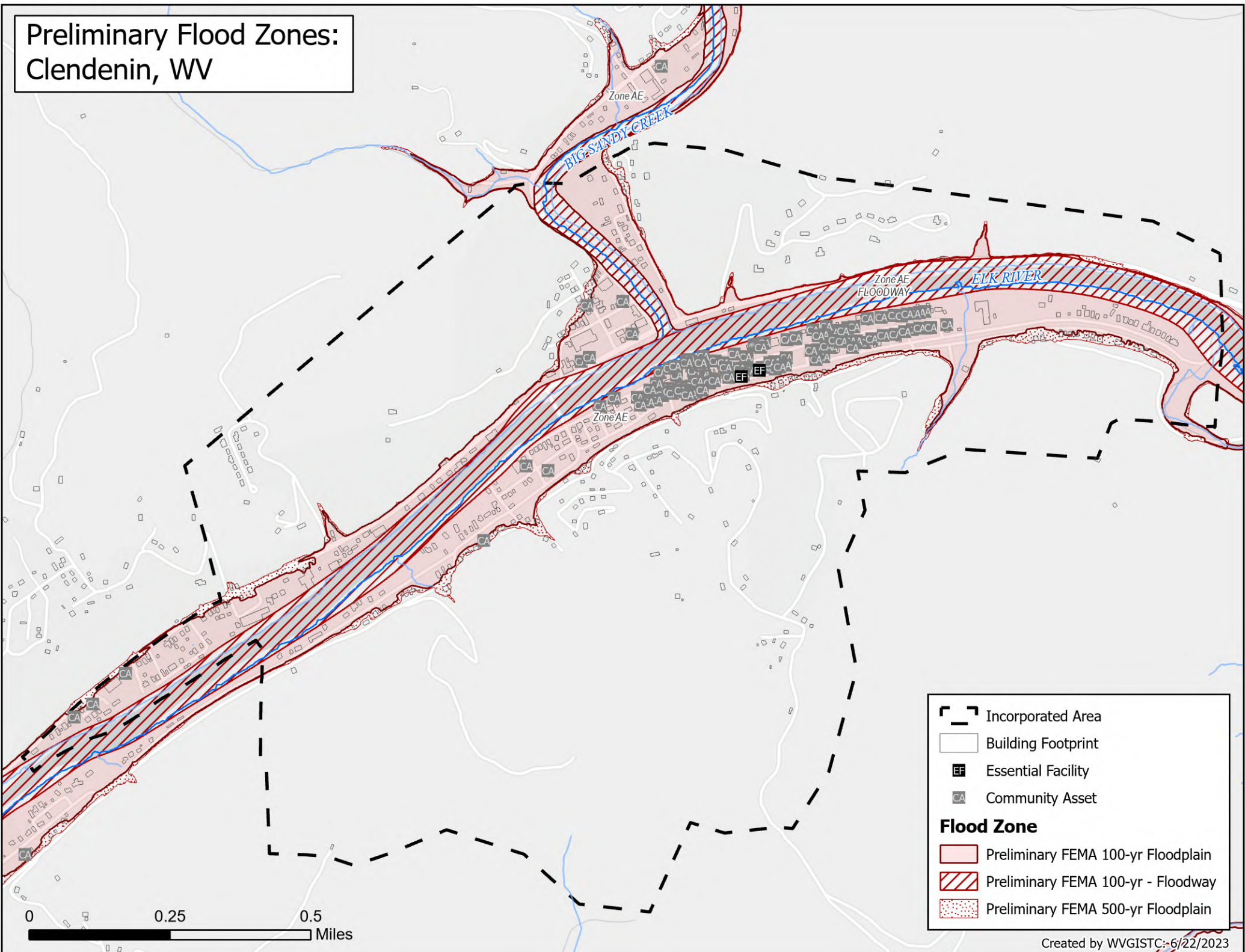


- Building Footprints
- Incorporated Area
- High Water Mark, USGS

Flood Frequency

- 10-year (10%)
- 25-year (4%)
- 50-year (2%)
- 100-year (1%)
- 100-year+ (1%+)
- 500-year (0.2%)

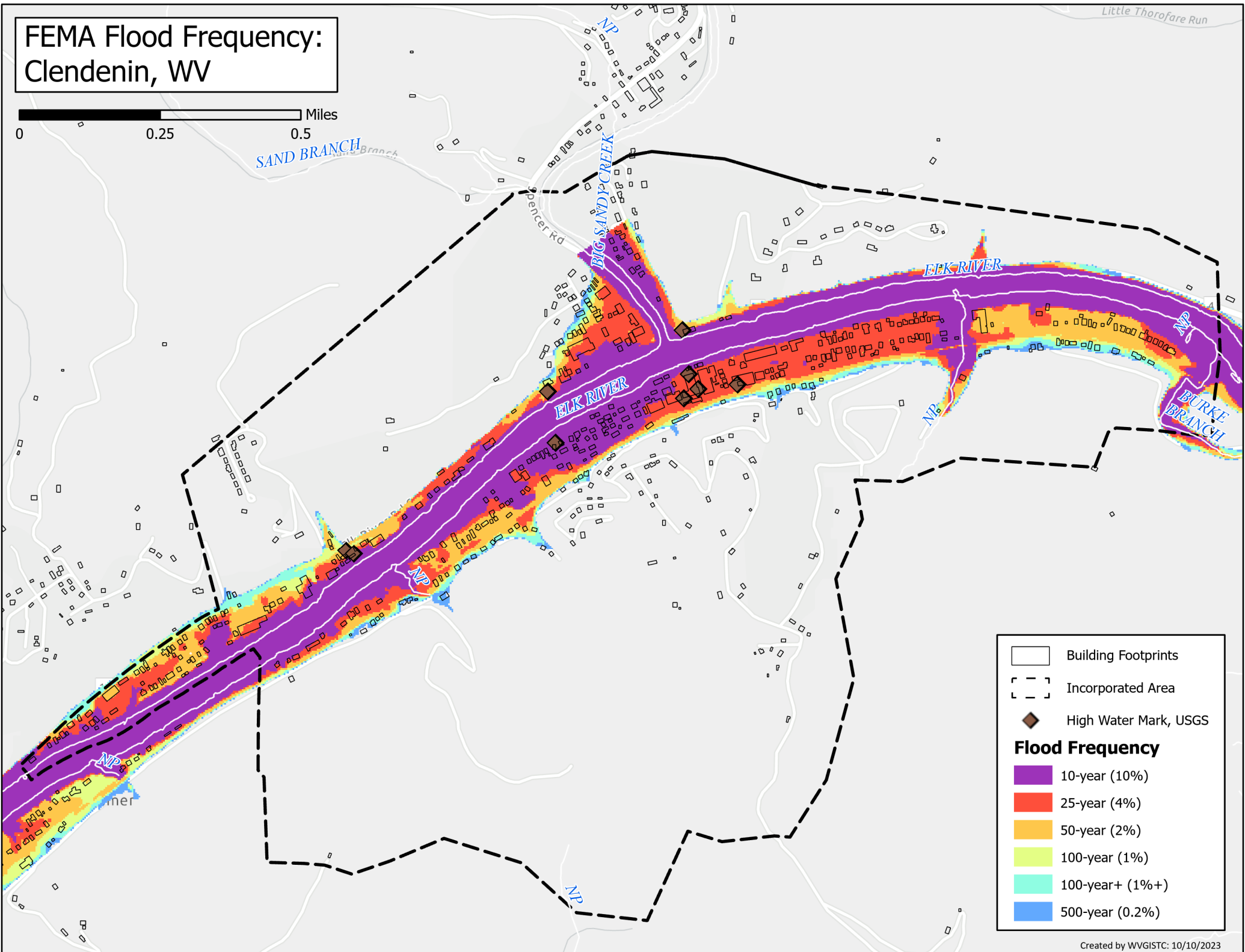
Preliminary Flood Zones: Clendenin, WV



	Incorporated Area
	Building Footprint
	Essential Facility
	Community Asset
Flood Zone	
	Preliminary FEMA 100-yr Floodplain
	Preliminary FEMA 100-yr - Floodway
	Preliminary FEMA 500-yr Floodplain

FEMA Flood Frequency: Clendenin, WV

0 0.25 0.5 Miles



- Building Footprints
- Incorporated Area
- High Water Mark, USGS

Flood Frequency

- 10-year (10%)
- 25-year (4%)
- 50-year (2%)
- 100-year (1%)
- 100-year+ (1%+)
- 500-year (0.2%)

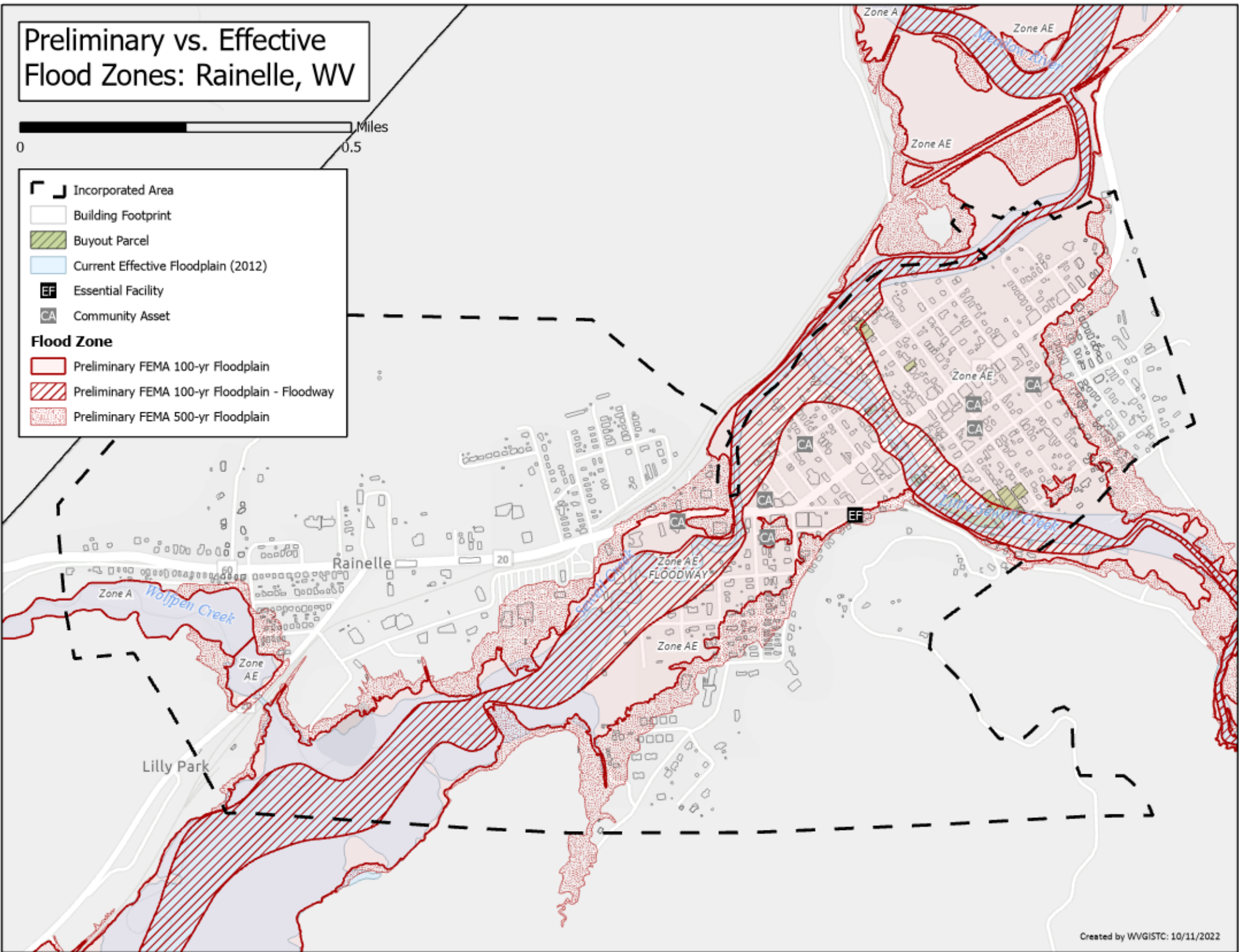
Preliminary vs. Effective Flood Zones: Rainelle, WV



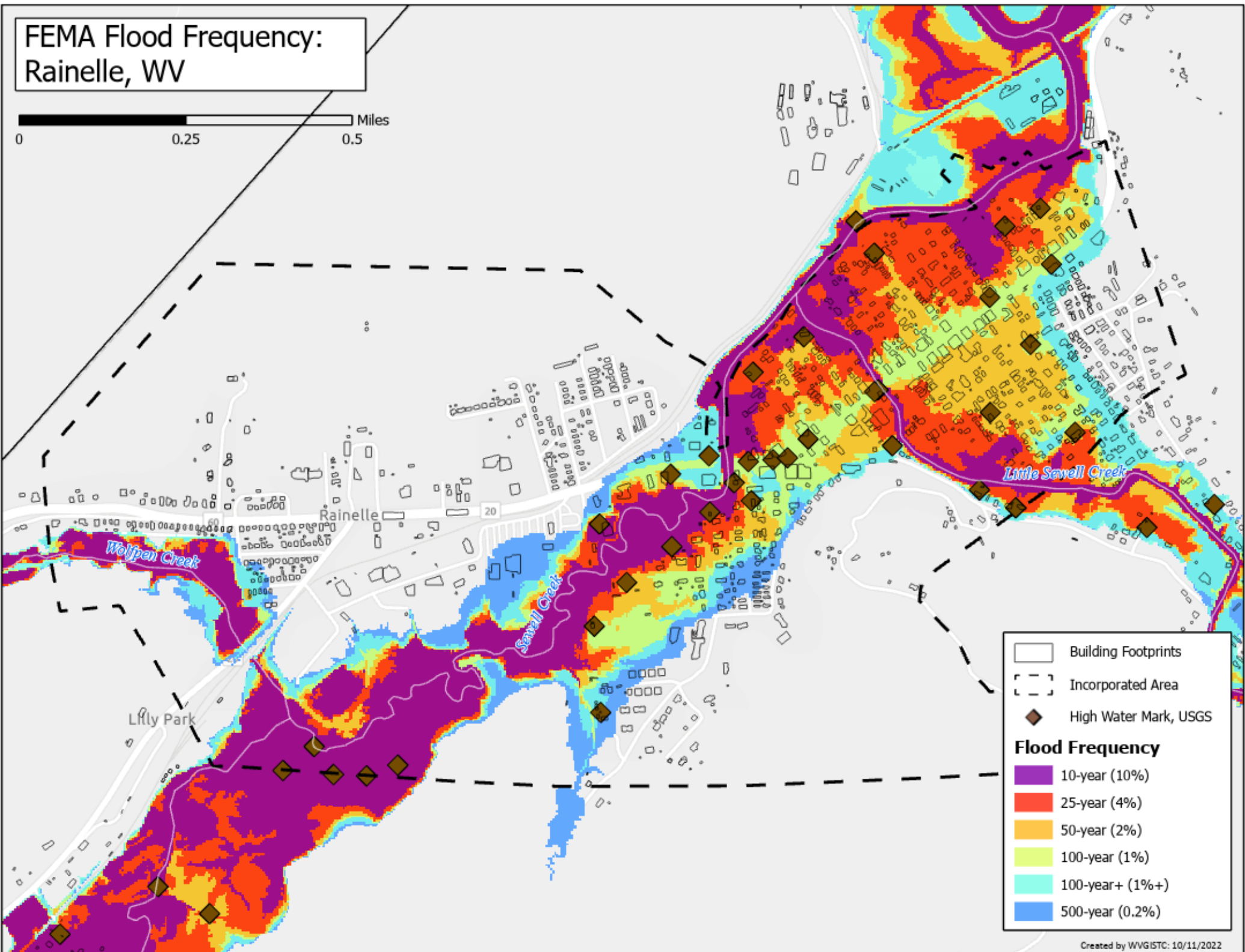
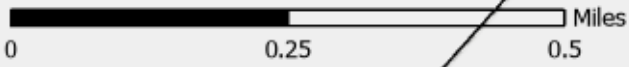
- Incorporated Area
- Building Footprint
- Buyout Parcel
- Current Effective Floodplain (2012)
- Essential Facility
- Community Asset

Flood Zone

- Preliminary FEMA 100-yr Floodplain
- Preliminary FEMA 100-yr Floodplain - Floodway
- Preliminary FEMA 500-yr Floodplain



FEMA Flood Frequency: Rainelle, WV

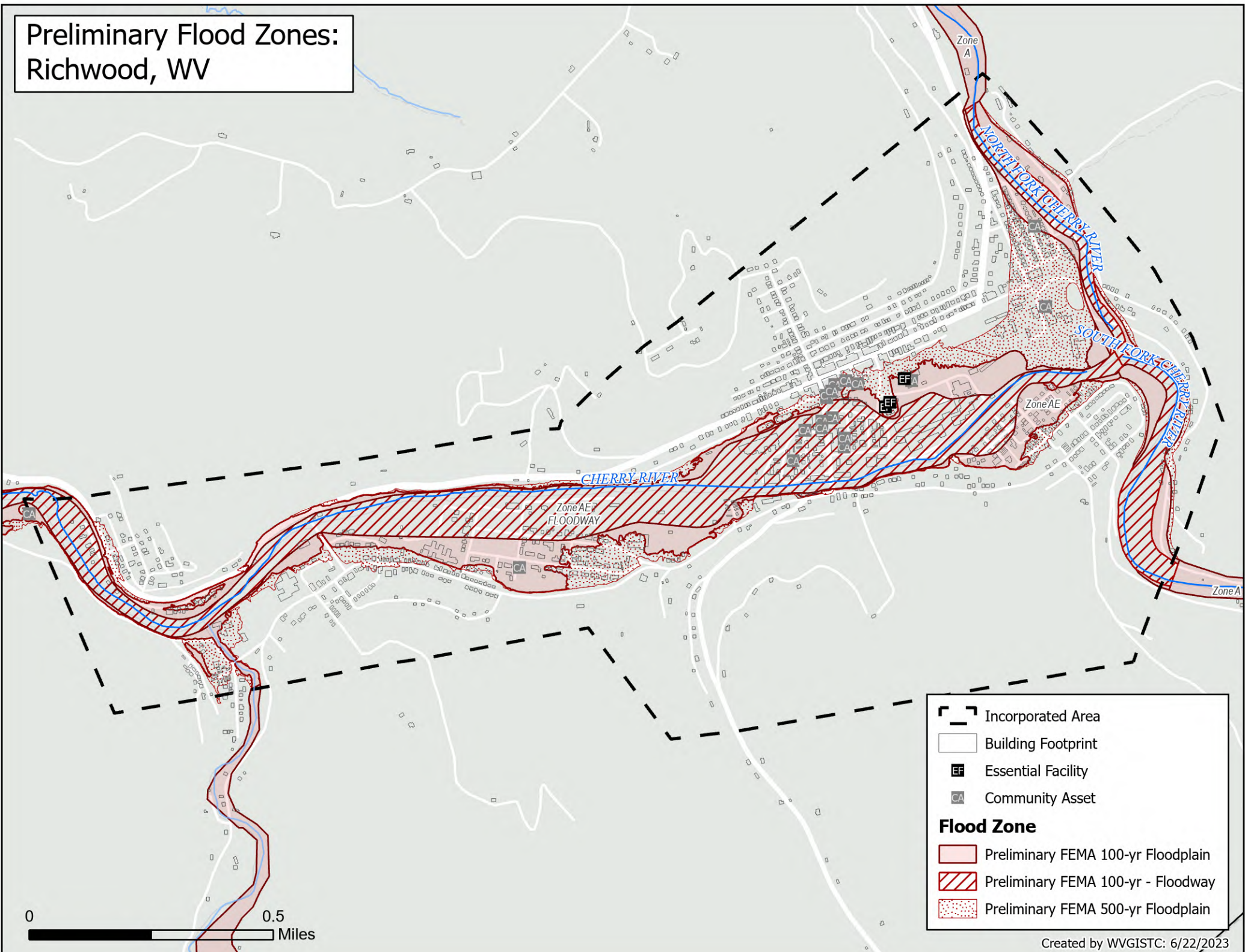


- Building Footprints
- Incorporated Area
- High Water Mark, USGS

Flood Frequency

- 10-year (10%)
- 25-year (4%)
- 50-year (2%)
- 100-year (1%)
- 100-year+ (1%+)
- 500-year (0.2%)

Preliminary Flood Zones: Richwood, WV



Incorporated Area

Building Footprint

Essential Facility

Community Asset

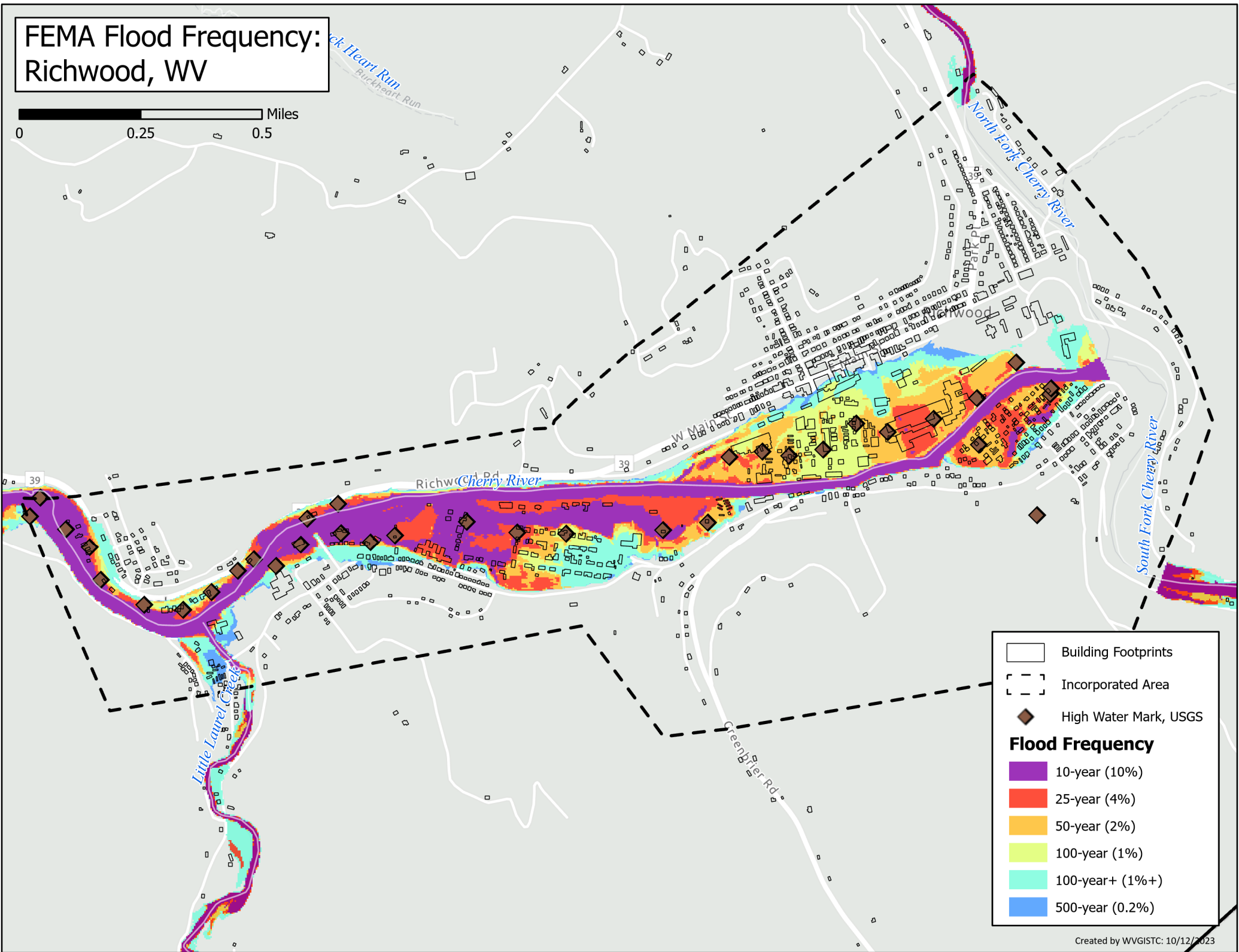
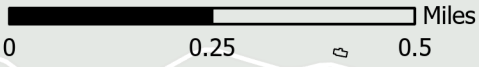
Flood Zone

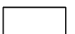


Preliminary FEMA 100-yr Floodplain

Preliminary FEMA 100-yr - Floodway






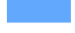
Preliminary FEMA 500-yr Floodplain

FEMA Flood Frequency: Richwood, WV



-  Building Footprints
-  Incorporated Area
-  High Water Mark, USGS

Flood Frequency

-  10-year (10%)
-  25-year (4%)
-  50-year (2%)
-  100-year (1%)
-  100-year+ (1%+)
-  500-year (0.2%)

Preliminary vs. Effective Flood Zones: White Sulphur Springs, WV

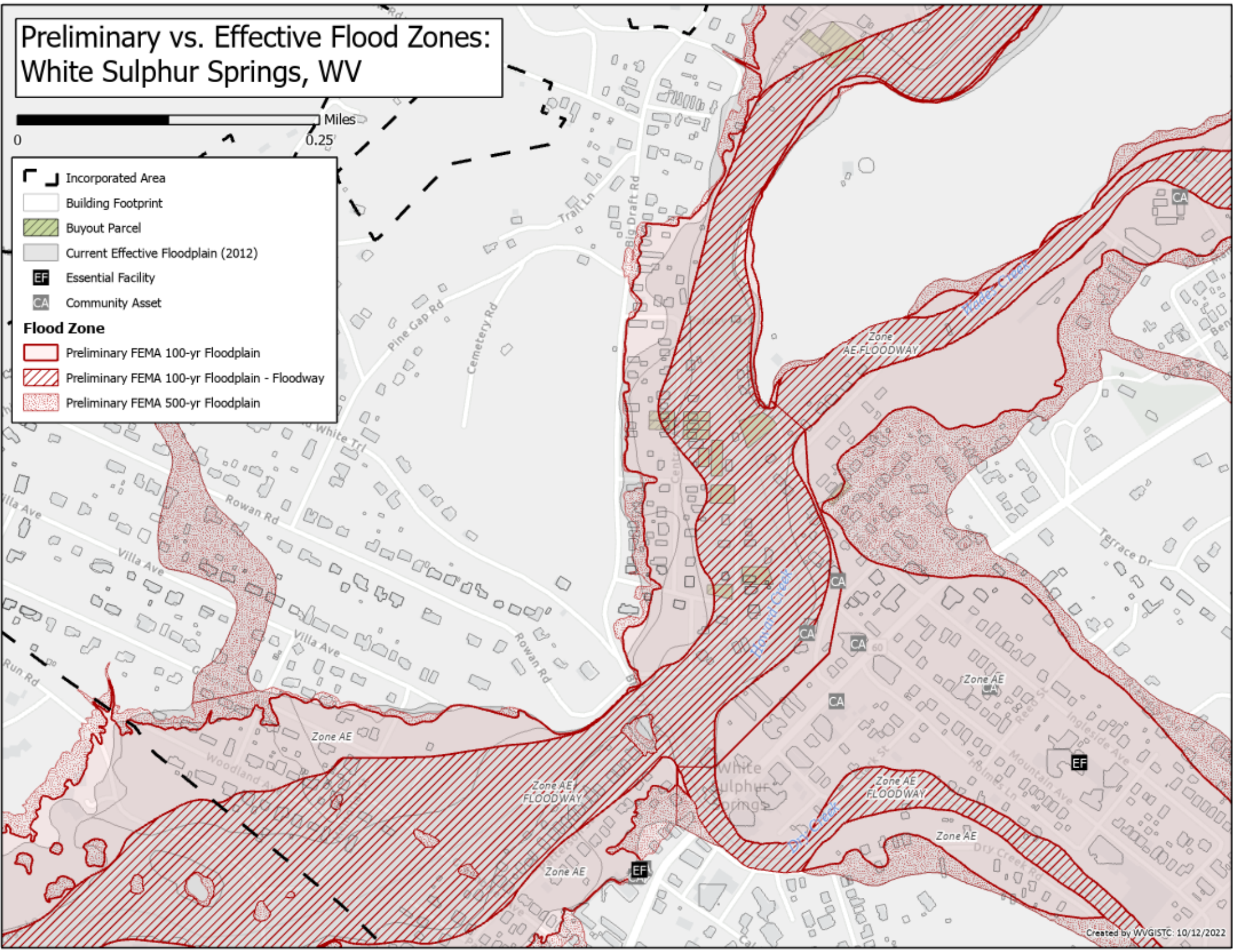


Incorporated Area

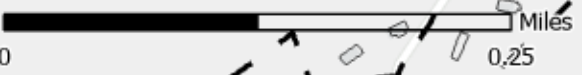
- Building Footprint
- Buyout Parcel
- Current Effective Floodplain (2012)
- Essential Facility (EF)
- Community Asset (CA)

Flood Zone

- Preliminary FEMA 100-yr Floodplain
- Preliminary FEMA 100-yr Floodplain - Floodway
- Preliminary FEMA 500-yr Floodplain



FEMA Flood Frequency: White Sulphur Springs, WV



- Building Footprints
 - Incorporated Area
 - High Water Mark, USGS
- Flood Frequency**
- 10-year (10%)
 - 25-year (4%)
 - 50-year (2%)
 - 100-year (1%)
 - 100-year+ (1%+)
 - 500-year (0.2%)

