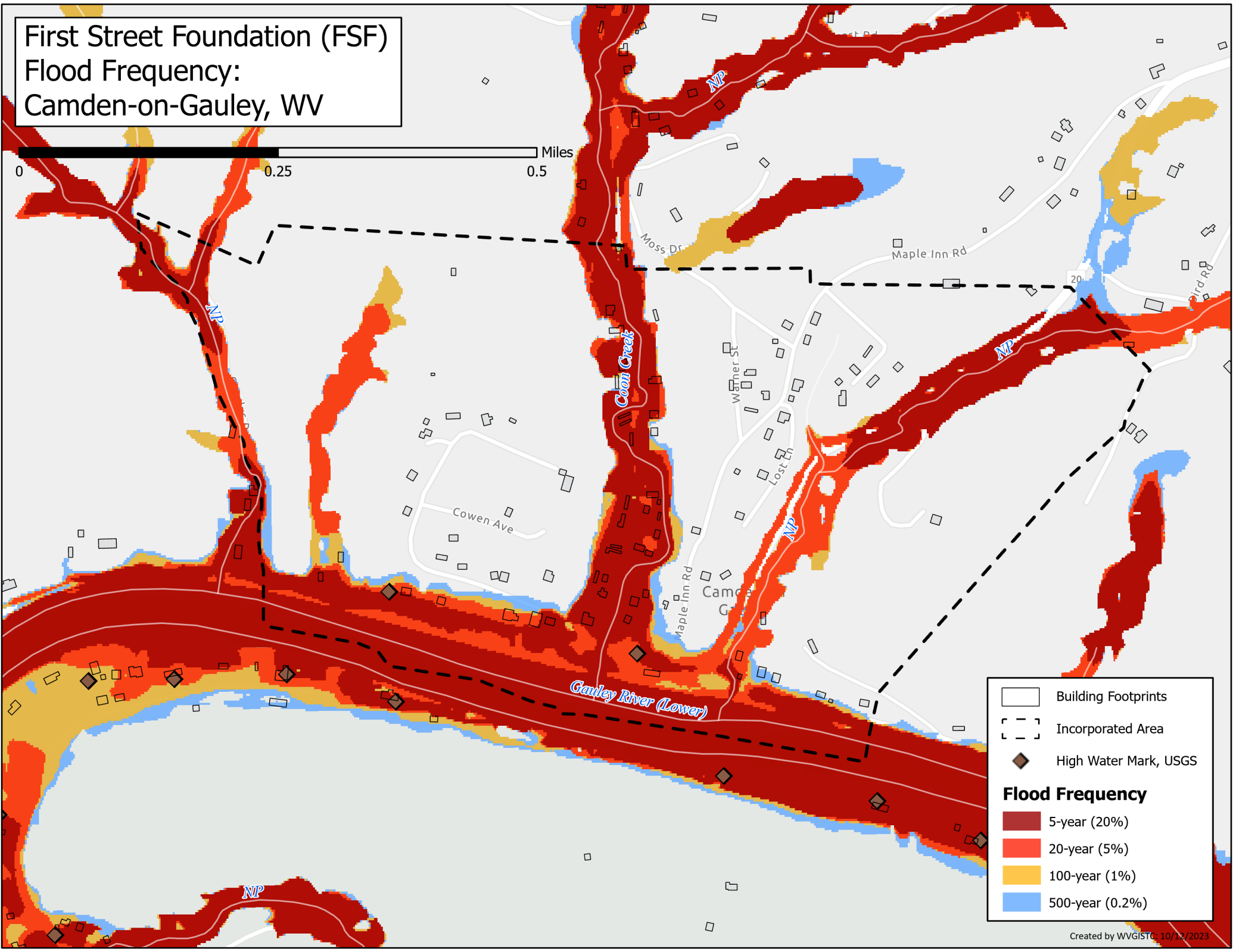
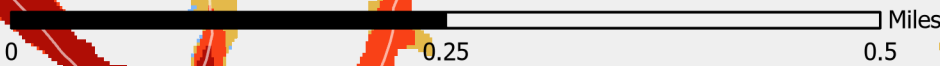


First Street Foundation (FSF)  
Flood Frequency:  
Camden-on-Gauley, WV



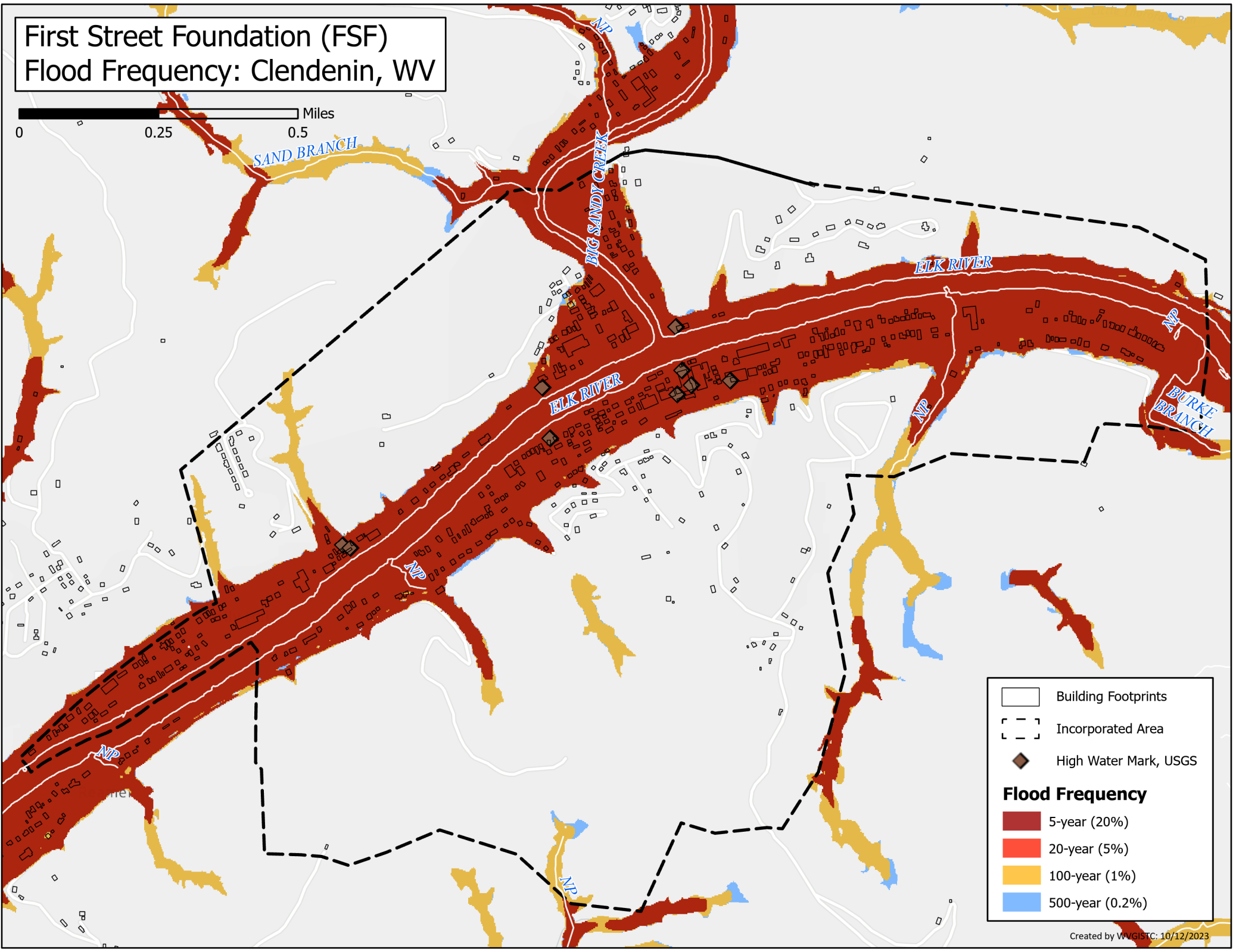
- Building Footprints
- Incorporated Area
- High Water Mark, USGS

**Flood Frequency**

- 5-year (20%)
- 20-year (5%)
- 100-year (1%)
- 500-year (0.2%)

# First Street Foundation (FSF) Flood Frequency: Clendenin, WV

0 0.25 0.5 Miles



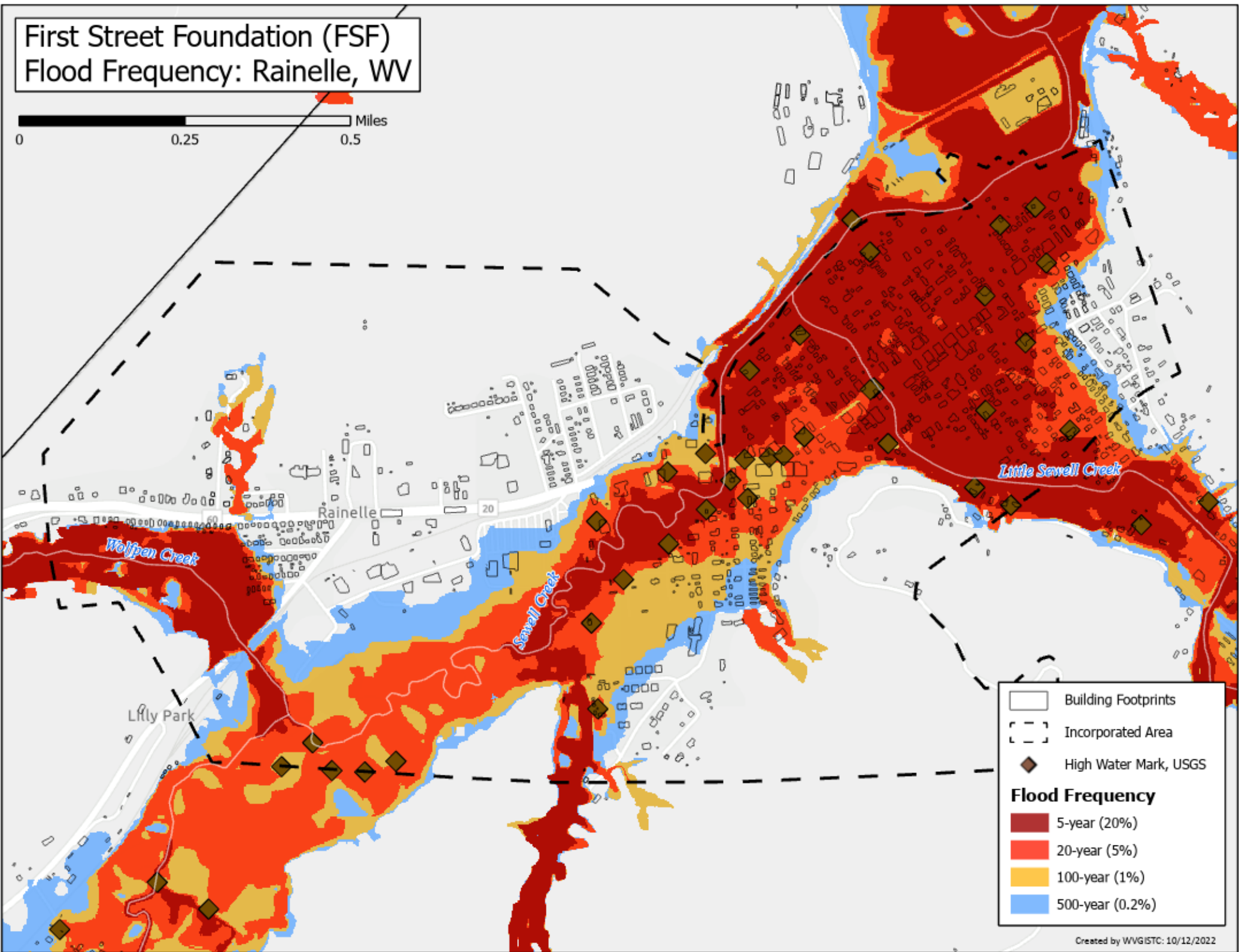
- Building Footprints
- Incorporated Area
- High Water Mark, USGS

**Flood Frequency**

- 5-year (20%)
- 20-year (5%)
- 100-year (1%)
- 500-year (0.2%)

# First Street Foundation (FSF) Flood Frequency: Rainelle, WV

0 0.25 0.5 Miles

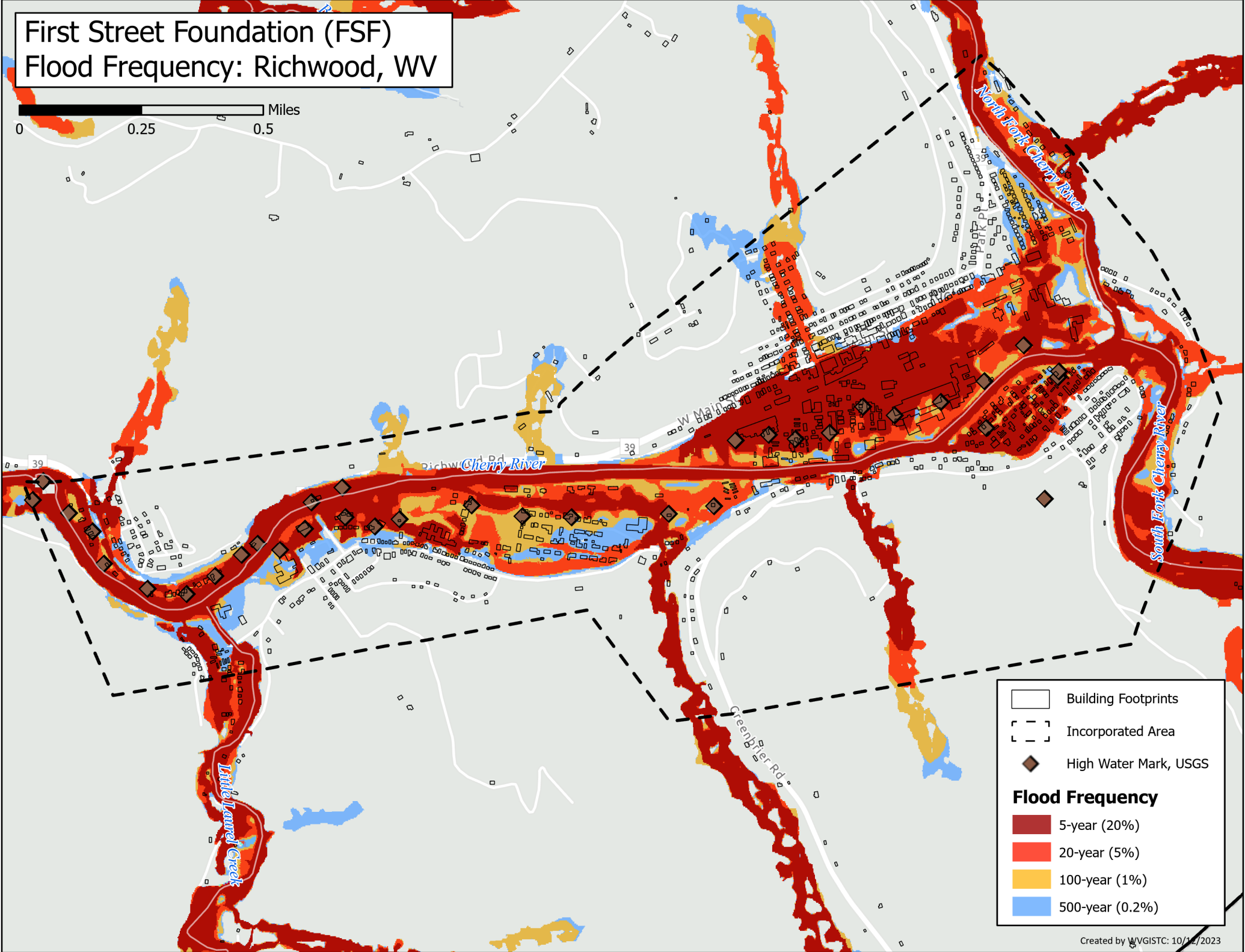
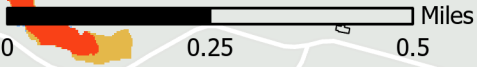


- Building Footprints
- Incorporated Area
- High Water Mark, USGS

**Flood Frequency**

- 5-year (20%)
- 20-year (5%)
- 100-year (1%)
- 500-year (0.2%)

# First Street Foundation (FSF) Flood Frequency: Richwood, WV



- Building Footprints
- Incorporated Area
- High Water Mark, USGS

**Flood Frequency**

- 5-year (20%)
- 20-year (5%)
- 100-year (1%)
- 500-year (0.2%)

# First Street Foundation (FSF) Flood Frequency: White Sulphur Springs, WV

0 0.25 Miles

- Building Footprints
- Incorporated Area
- High Water Mark, USGS

- ### Flood Frequency
- 5-year (20%)
  - 20-year (5%)
  - 100-year (1%)
  - 500-year (0.2%)

