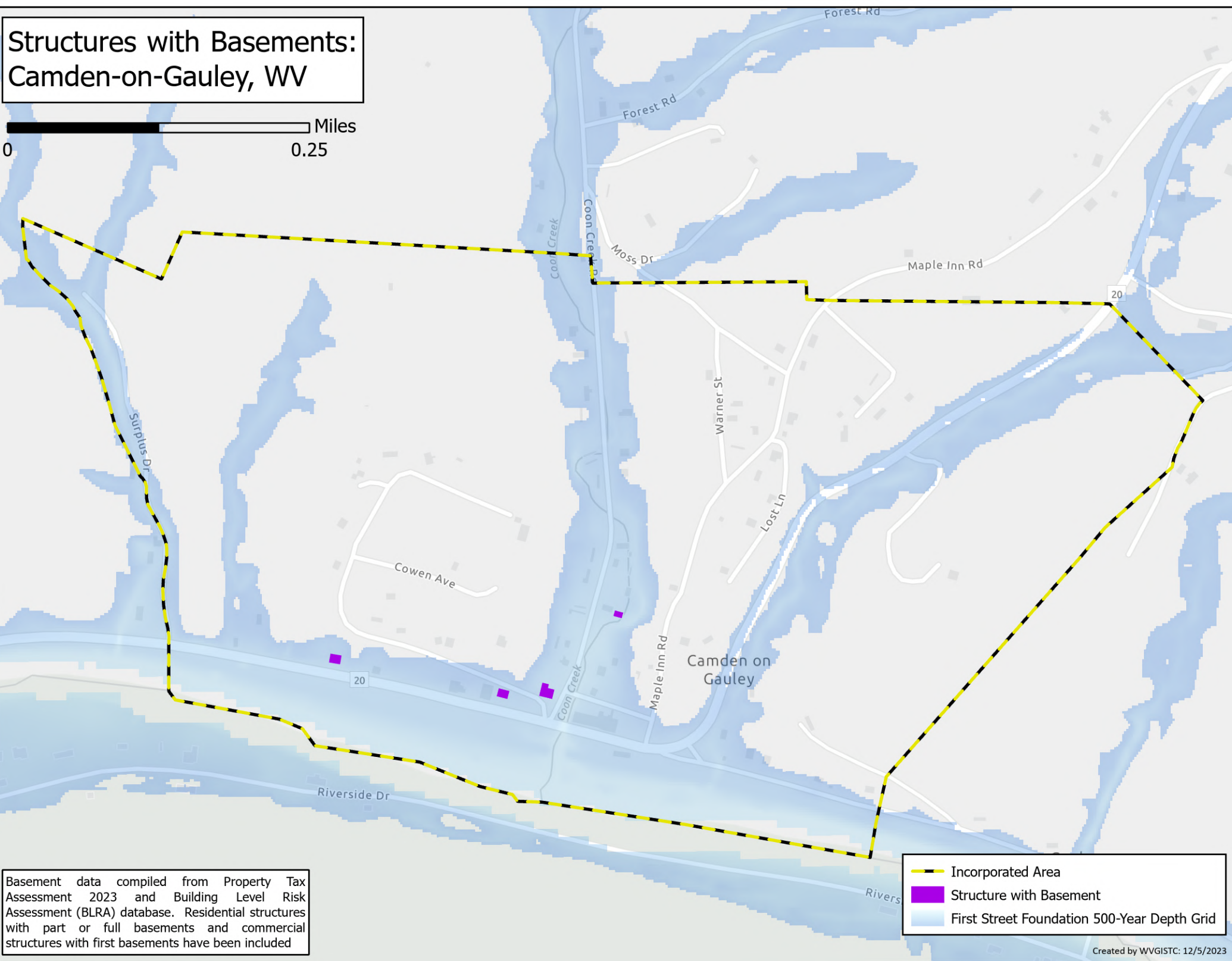


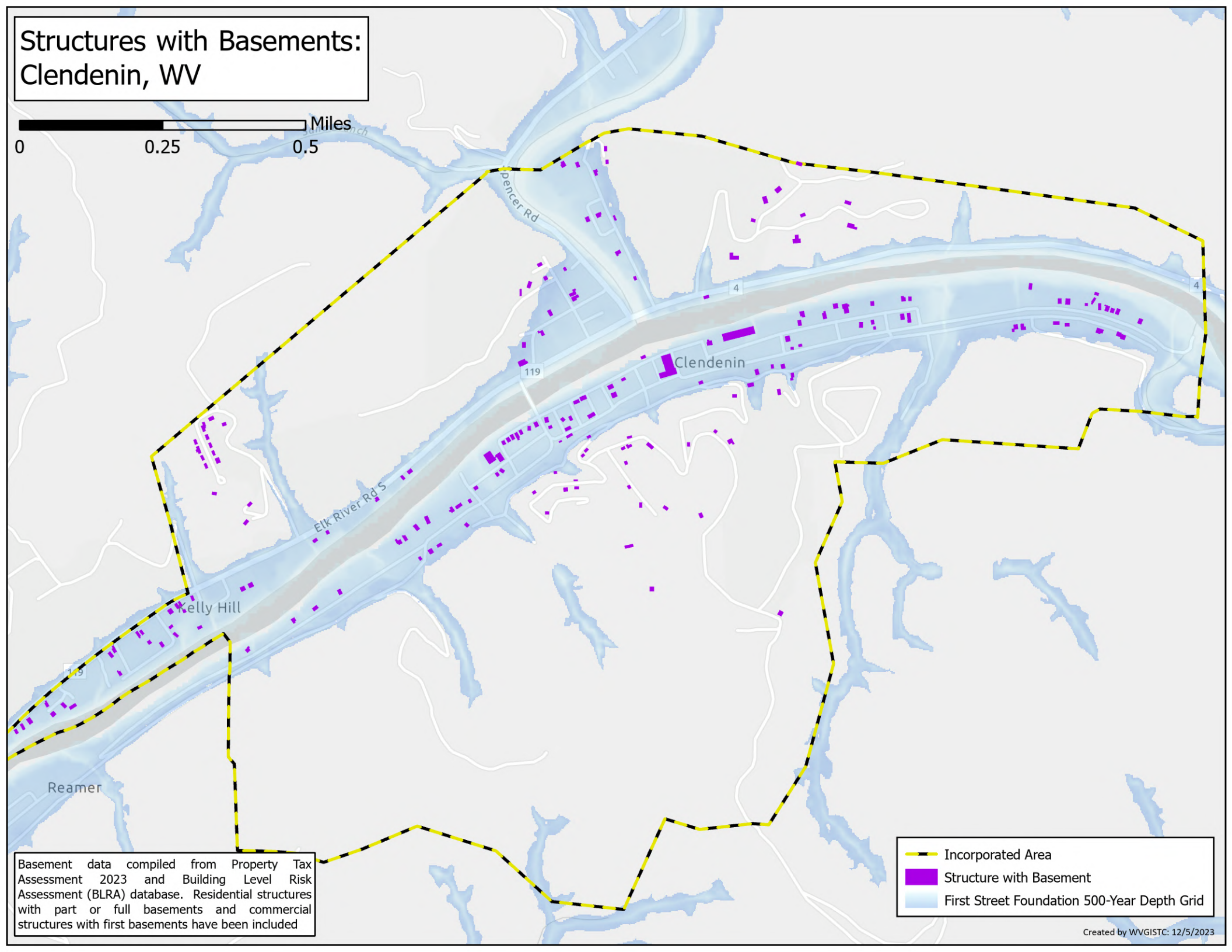
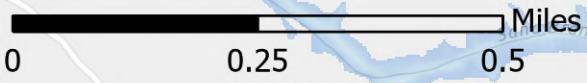
Structures with Basements: Camden-on-Gauley, WV



Basement data compiled from Property Tax Assessment 2023 and Building Level Risk Assessment (BLRA) database. Residential structures with part or full basements and commercial structures with first basements have been included

- Incorporated Area
- Structure with Basement
- First Street Foundation 500-Year Depth Grid

Structures with Basements: Clendenin, WV

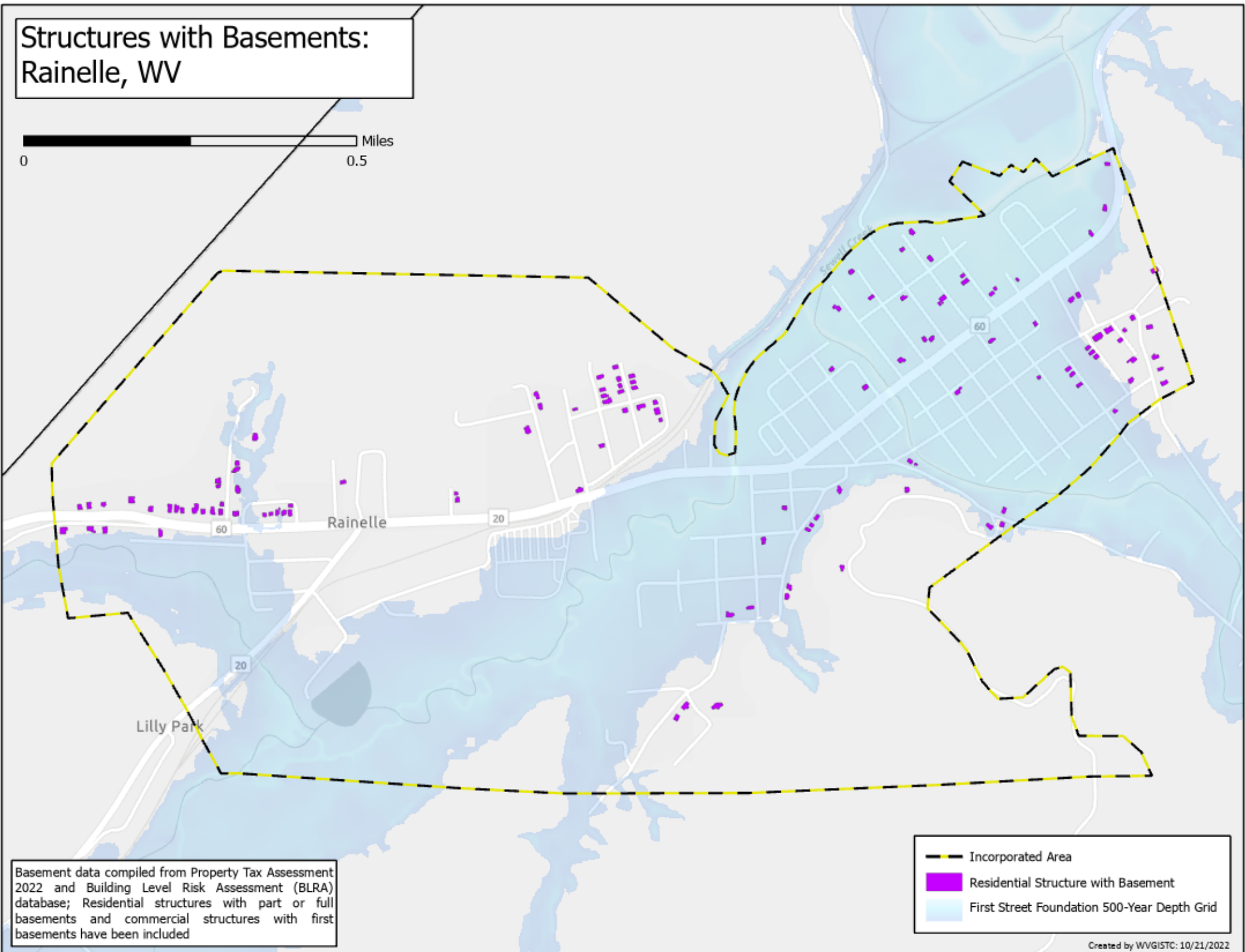


Basement data compiled from Property Tax Assessment 2023 and Building Level Risk Assessment (BLRA) database. Residential structures with part or full basements and commercial structures with first basements have been included

- Incorporated Area
- Structure with Basement
- First Street Foundation 500-Year Depth Grid

Structures with Basements: Rainelle, WV

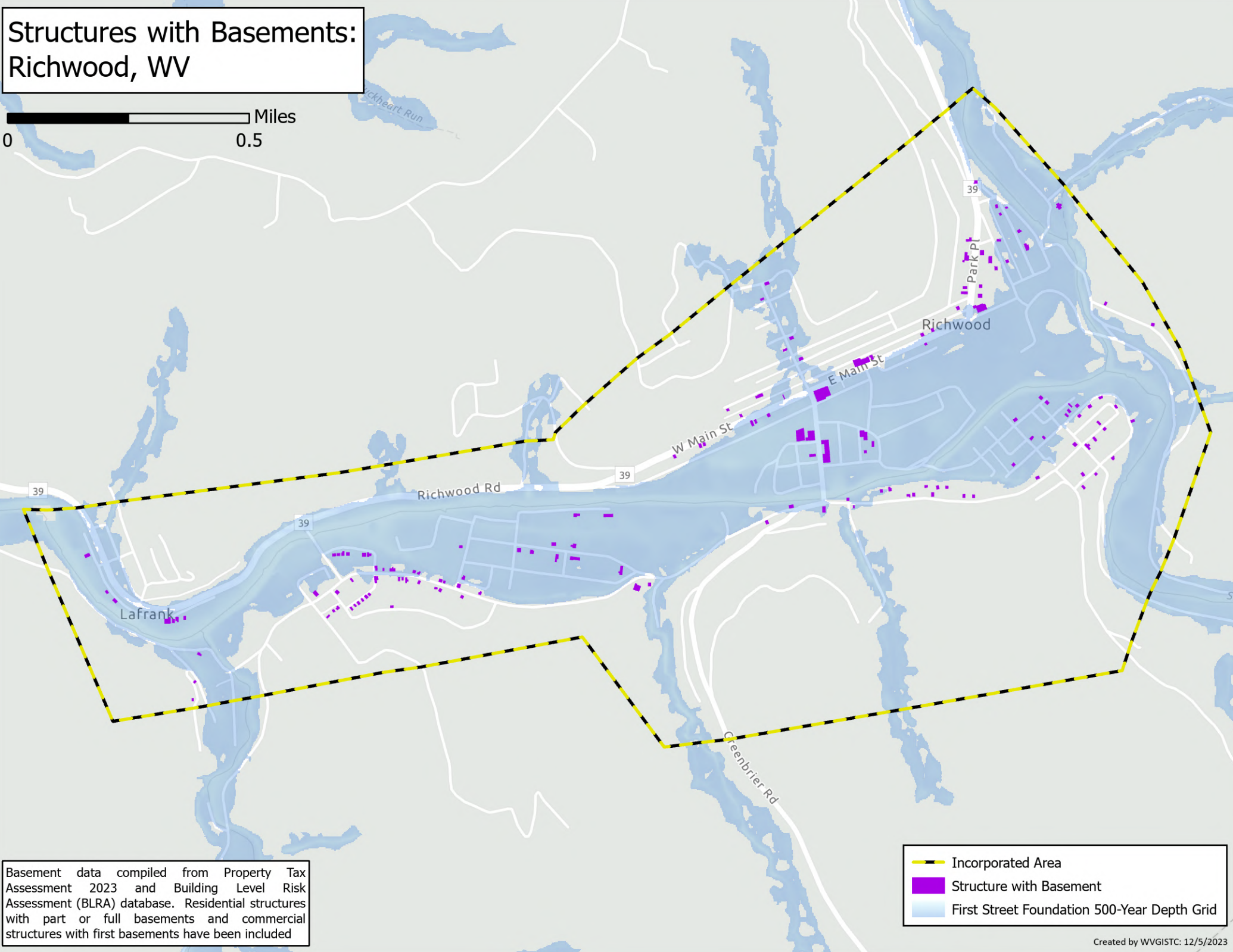
0 Miles 0.5



Basement data compiled from Property Tax Assessment 2022 and Building Level Risk Assessment (BLRA) database; Residential structures with part or full basements and commercial structures with first basements have been included

- Incorporated Area
- Residential Structure with Basement
- First Street Foundation 500-Year Depth Grid

Structures with Basements: Richwood, WV



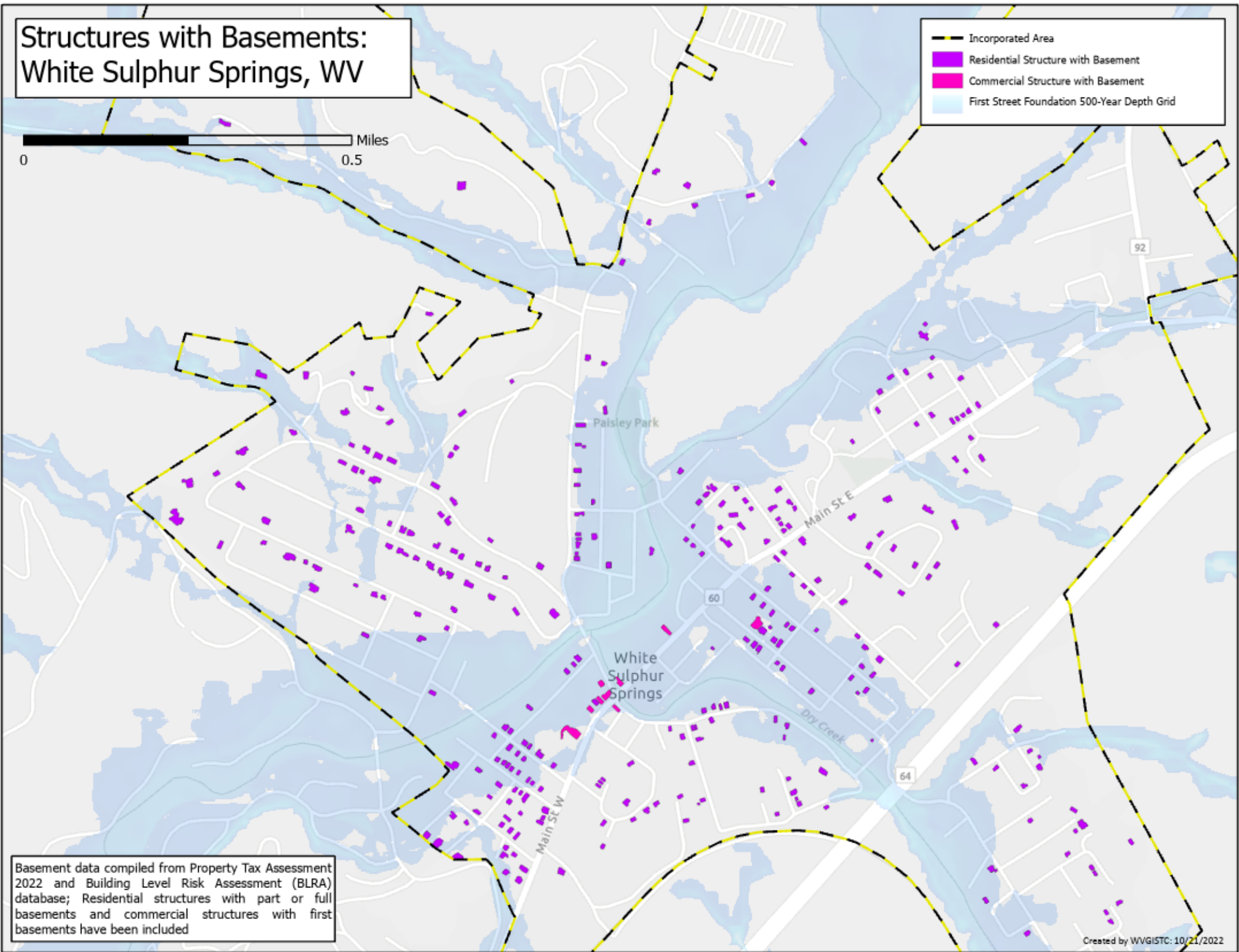
Basement data compiled from Property Tax Assessment 2023 and Building Level Risk Assessment (BLRA) database. Residential structures with part or full basements and commercial structures with first basements have been included

- Incorporated Area
- Structure with Basement
- First Street Foundation 500-Year Depth Grid

Structures with Basements: White Sulphur Springs, WV

0 0.5 Miles

- Incorporated Area
- Residential Structure with Basement
- Commercial Structure with Basement
- First Street Foundation 500-Year Depth Grid



Basement data compiled from Property Tax Assessment 2022 and Building Level Risk Assessment (BLRA) database; Residential structures with part or full basements and commercial structures with first basements have been included