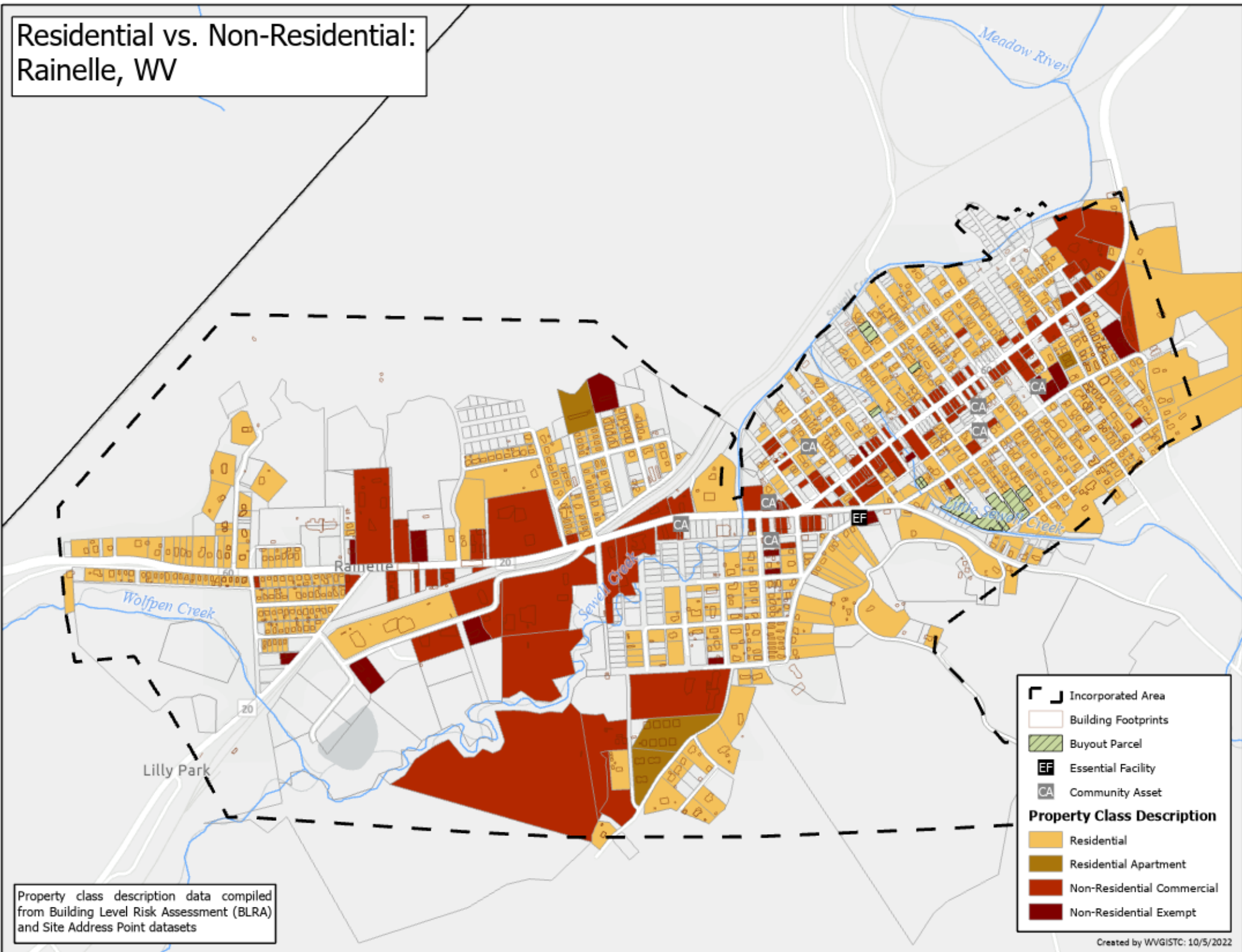


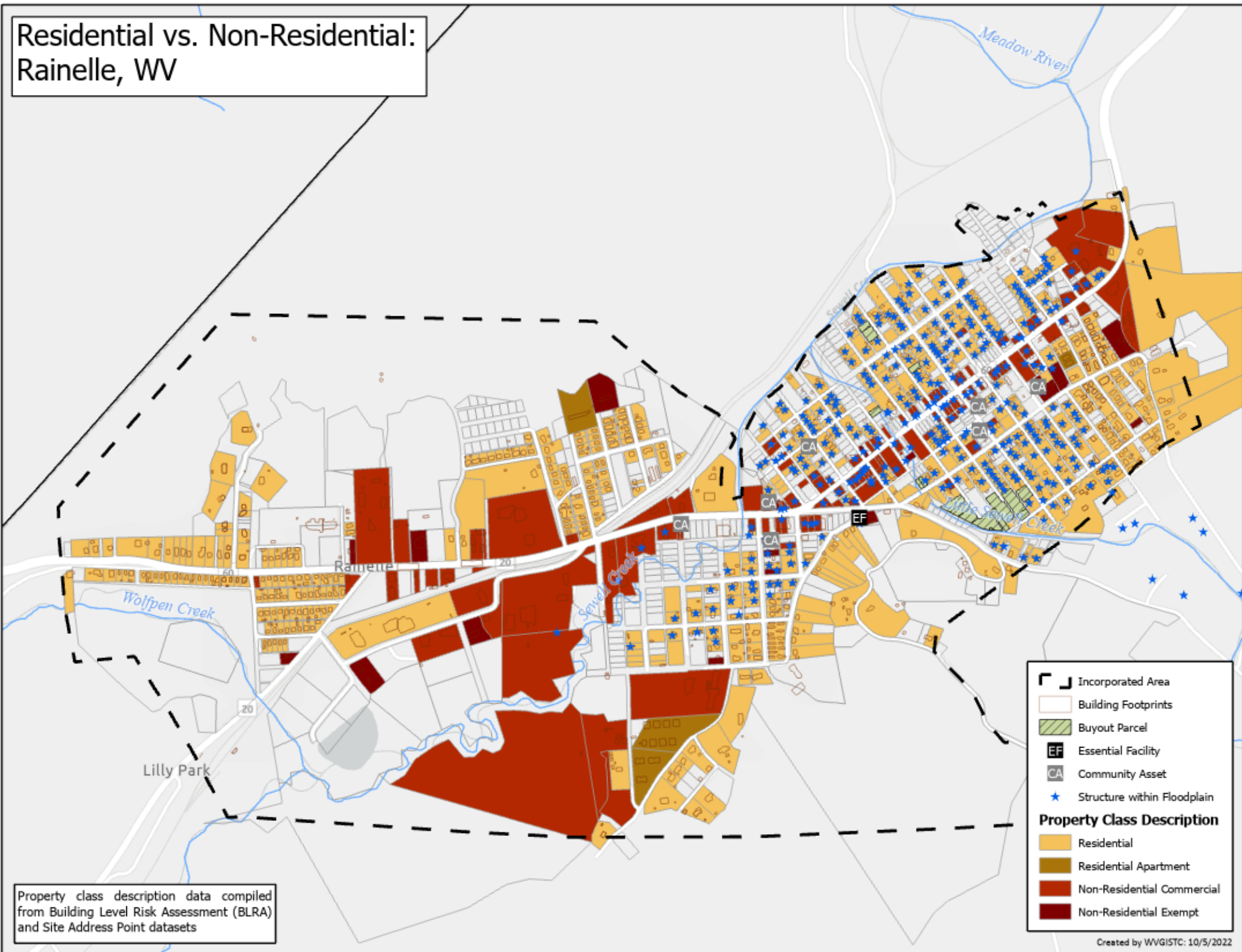
Residential vs. Non-Residential: Rainelle, WV



Property class description data compiled from Building Level Risk Assessment (BLRA) and Site Address Point datasets

	Incorporated Area
	Building Footprints
	Buyout Parcel
	Essential Facility
	Community Asset
Property Class Description	
	Residential
	Residential Apartment
	Non-Residential Commercial
	Non-Residential Exempt

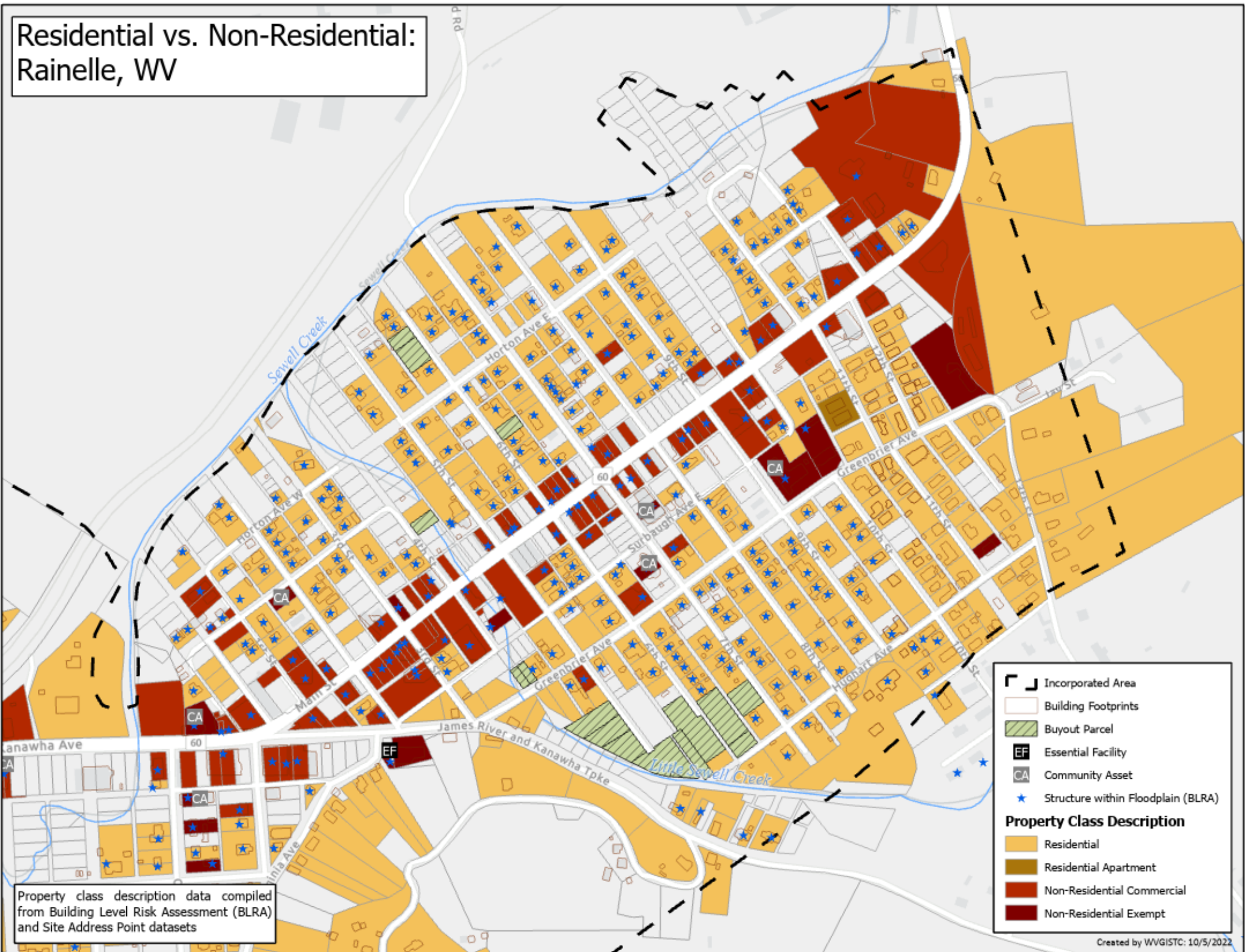
Residential vs. Non-Residential: Rainelle, WV



Property class description data compiled from Building Level Risk Assessment (BLRA) and Site Address Point datasets

	Incorporated Area
	Building Footprints
	Buyout Parcel
	Essential Facility
	Community Asset
	Structure within Floodplain
Property Class Description	
	Residential
	Residential Apartment
	Non-Residential Commercial
	Non-Residential Exempt

Residential vs. Non-Residential: Rainelle, WV



Property class description data compiled from Building Level Risk Assessment (BLRA) and Site Address Point datasets

Legend

- Incorporated Area
- Building Footprints
- Buyout Parcel
- Essential Facility (EF)
- Community Asset (CA)
- Structure within Floodplain (BLRA)

Property Class Description

- Residential
- Residential Apartment
- Non-Residential Commercial
- Non-Residential Exempt