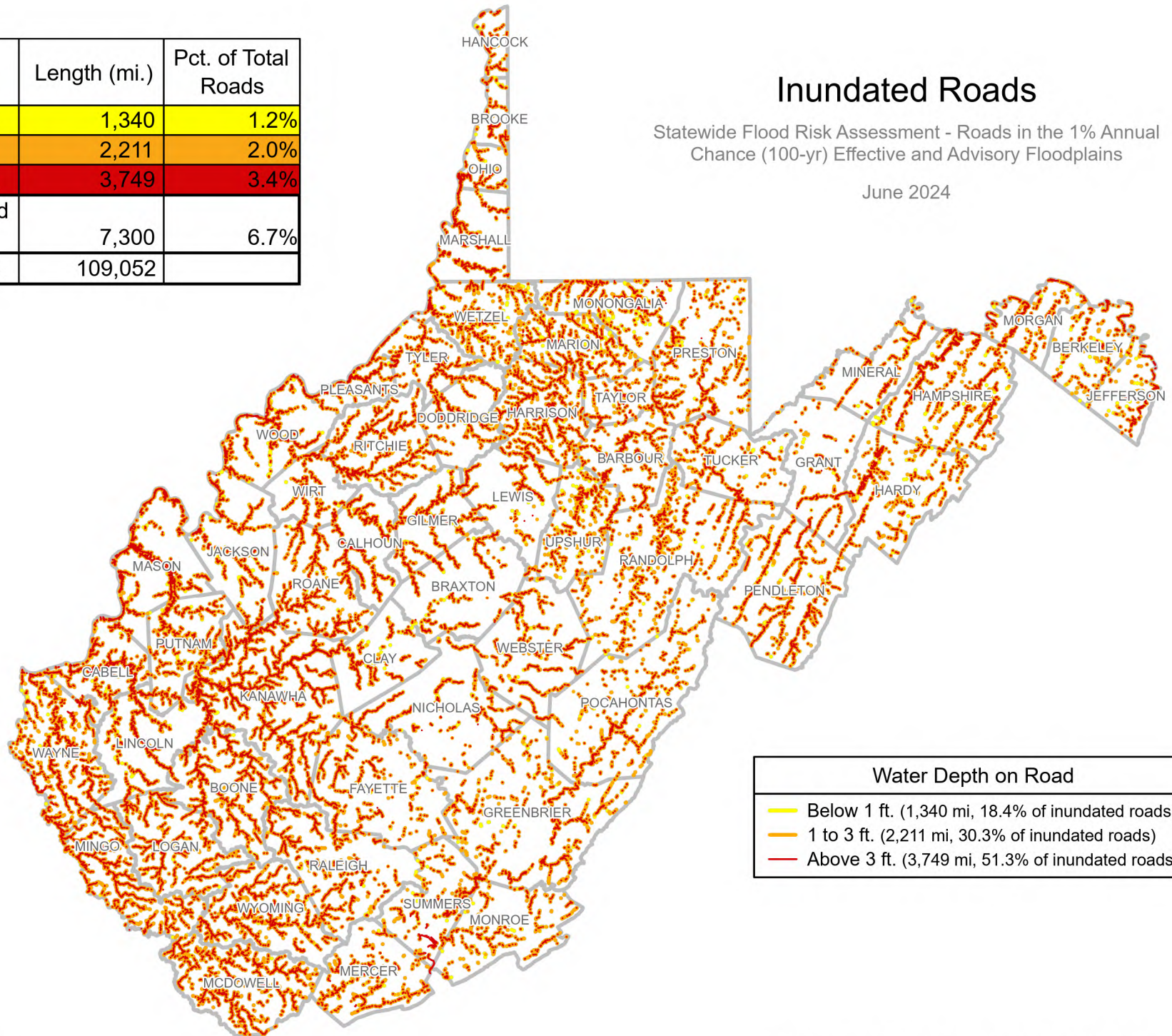


	Length (mi.)	Pct. of Total Roads
Below 1 ft.	1,340	1.2%
1 to 3 ft.	2,211	2.0%
Above 3 ft.	3,749	3.4%
All Inundated Roads	7,300	6.7%
Total Roads	109,052	

Inundated Roads

Statewide Flood Risk Assessment - Roads in the 1% Annual Chance (100-yr) Effective and Advisory Floodplains

June 2024



Water Depth on Road	
—	Below 1 ft. (1,340 mi, 18.4% of inundated roads)
—	1 to 3 ft. (2,211 mi, 30.3% of inundated roads)
—	Above 3 ft. (3,749 mi, 51.3% of inundated roads)