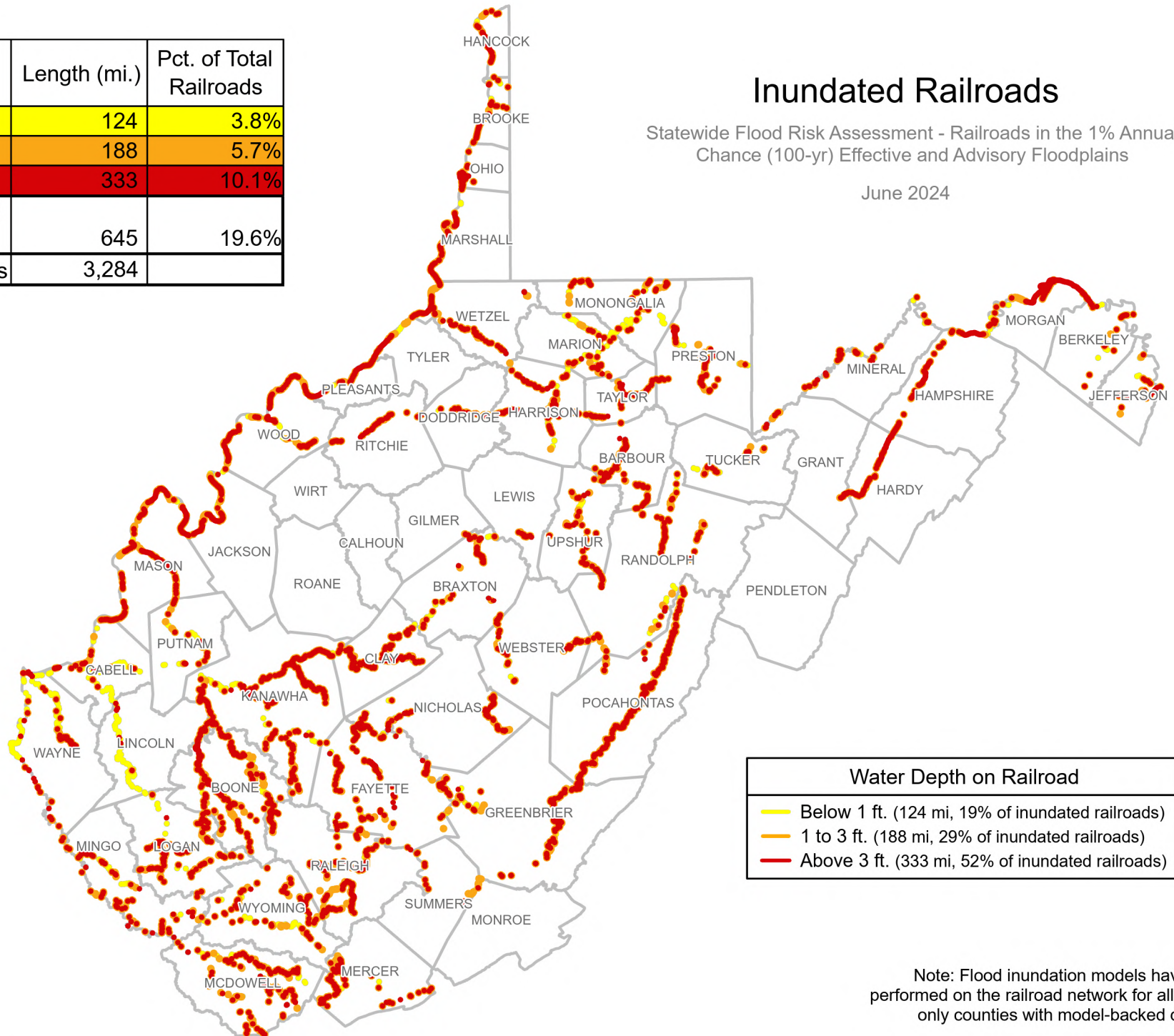


	Length (mi.)	Pct. of Total Railroads
Below 1 ft.	124	3.8%
1 to 3 ft.	188	5.7%
Above 3 ft.	333	10.1%
All Inundated Railroads	645	19.6%
Total Railroads	3,284	

Inundated Railroads

Statewide Flood Risk Assessment - Railroads in the 1% Annual Chance (100-yr) Effective and Advisory Floodplains

June 2024



Water Depth on Railroad	
Below 1 ft. (124 mi, 19% of inundated railroads)	Yellow
1 to 3 ft. (188 mi, 29% of inundated railroads)	Orange
Above 3 ft. (333 mi, 52% of inundated railroads)	Red

Note: Flood inundation models have not been performed on the railroad network for all counties—only counties with model-backed depth grids.