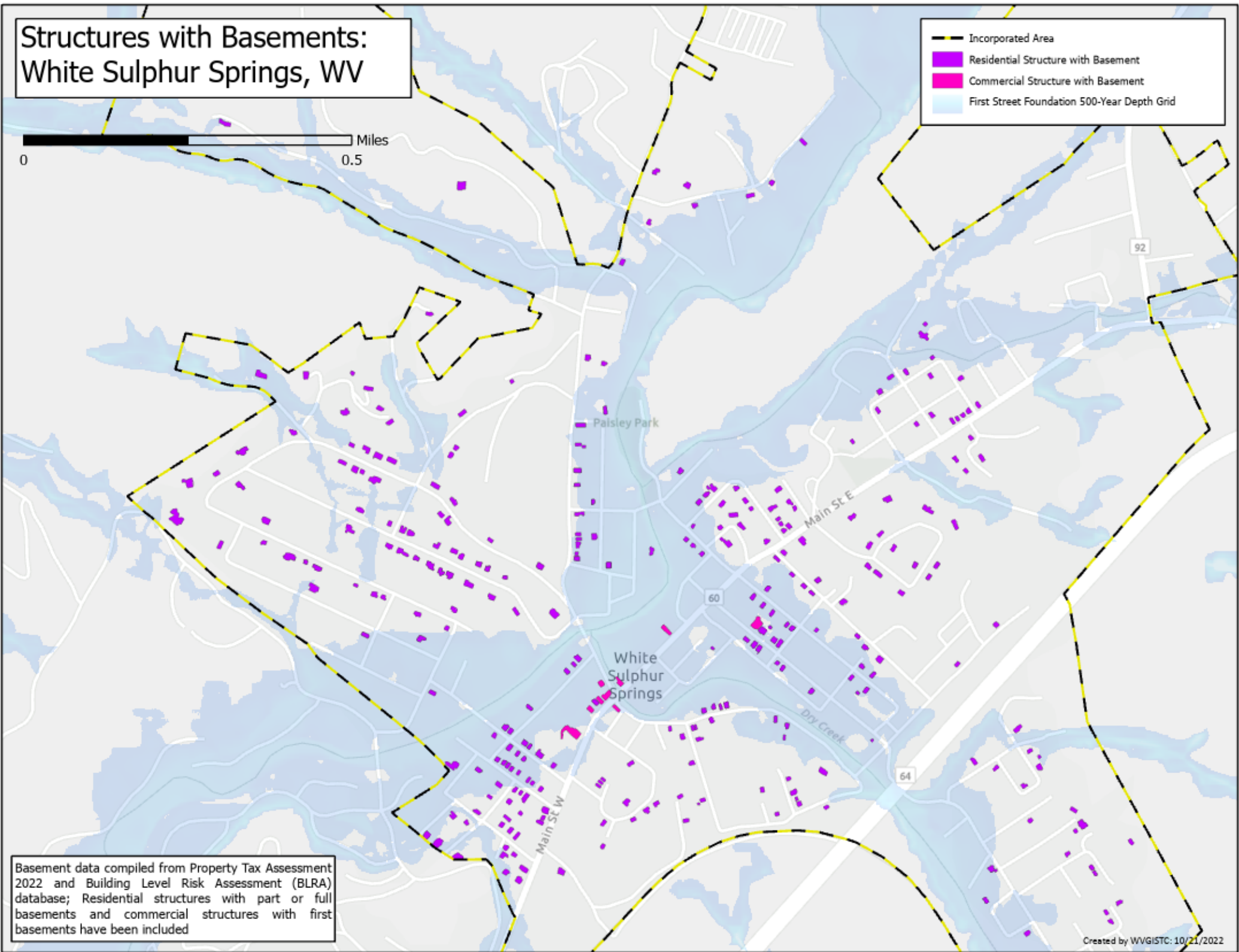


Structures with Basements: White Sulphur Springs, WV

0 0.5 Miles

- Incorporated Area
- Residential Structure with Basement
- Commercial Structure with Basement
- First Street Foundation 500-Year Depth Grid



Basement data compiled from Property Tax Assessment 2022 and Building Level Risk Assessment (BLRA) database; Residential structures with part or full basements and commercial structures with first basements have been included