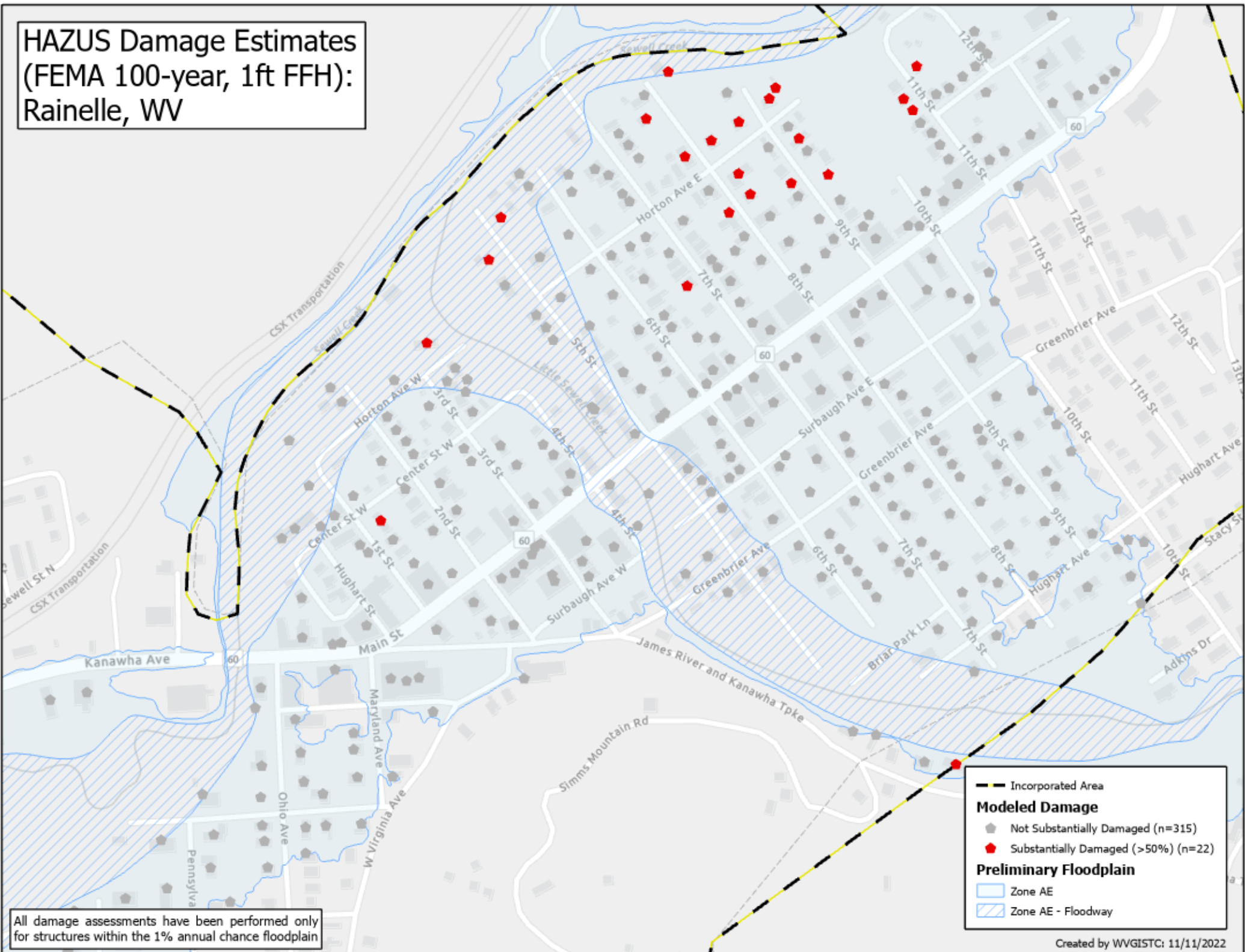


# HAZUS Damage Estimates (FEMA 100-year, 1ft FFH): Rainelle, WV



All damage assessments have been performed only for structures within the 1% annual chance floodplain

**— Incorporated Area**

**Modeled Damage**

- Not Substantially Damaged (n=315)
- Substantially Damaged (>50%) (n=22)

**Preliminary Floodplain**

- Zone AE
- ▨ Zone AE - Floodway