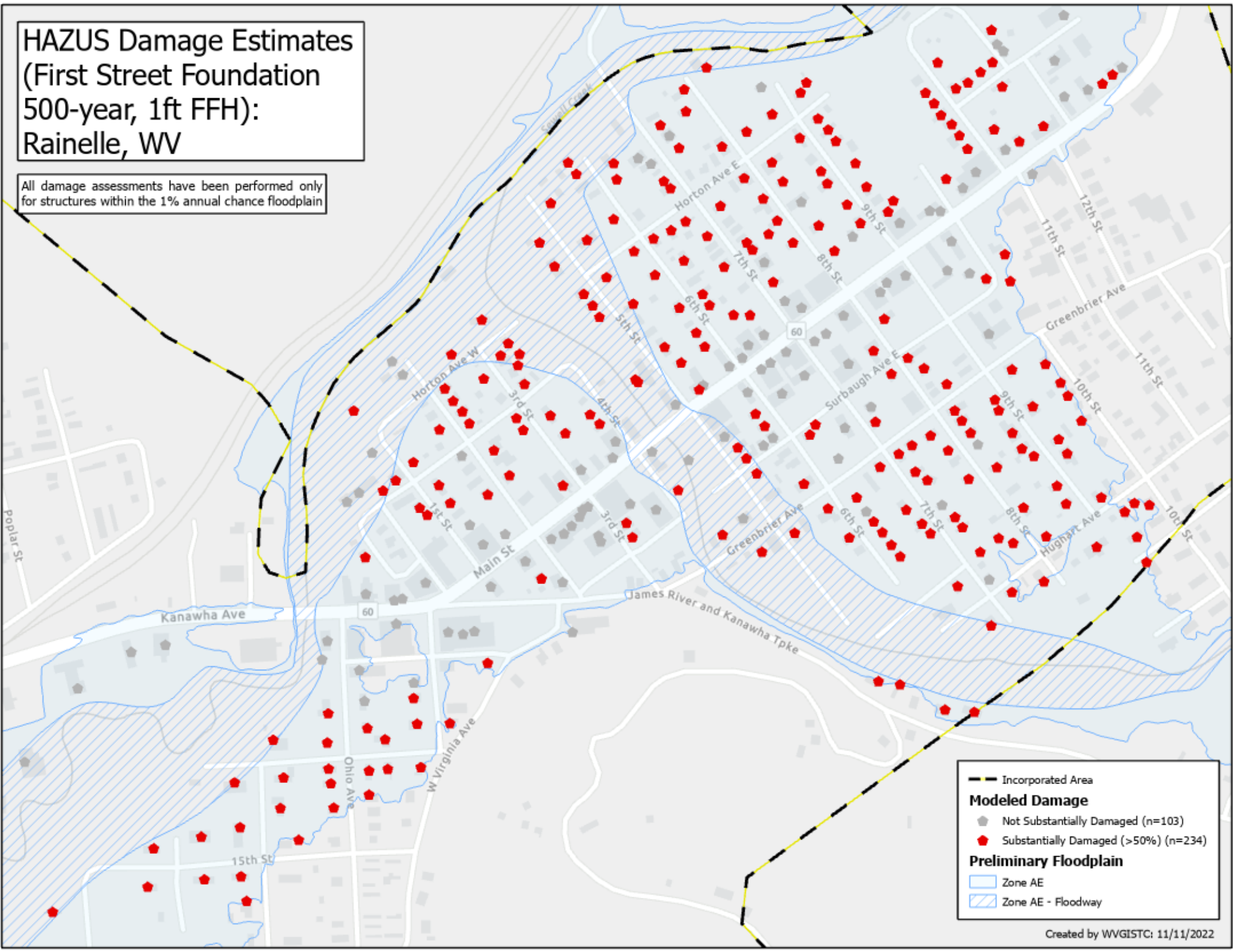


# HAZUS Damage Estimates (First Street Foundation 500-year, 1ft FFH): Rainelle, WV

All damage assessments have been performed only for structures within the 1% annual chance floodplain



— Incorporated Area

**Modeled Damage**

- Not Substantially Damaged (n=103)
- Substantially Damaged (>50%) (n=234)

**Preliminary Floodplain**

- Zone AE
- Zone AE - Floodway