

# HAZUS Damage Estimates (First Street Foundation 500-year, 1ft FFH): White Sulphur Springs, WV

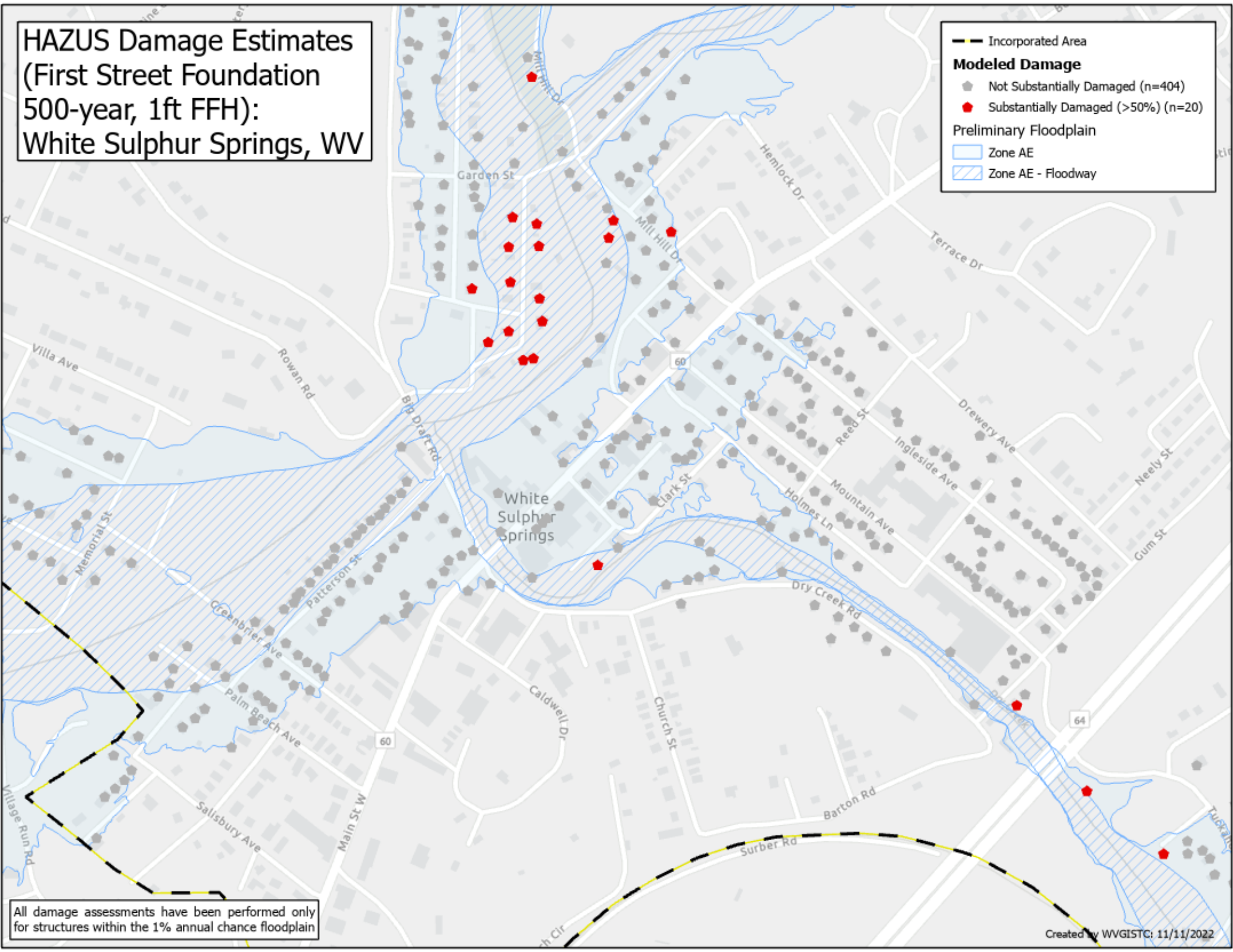
**Incorporated Area**  
—●—

**Modeled Damage**

- Not Substantially Damaged (n=404)
- Substantially Damaged (>50%) (n=20)

**Preliminary Floodplain**

- Zone AE
- Zone AE - Floodway



All damage assessments have been performed only for structures within the 1% annual chance floodplain